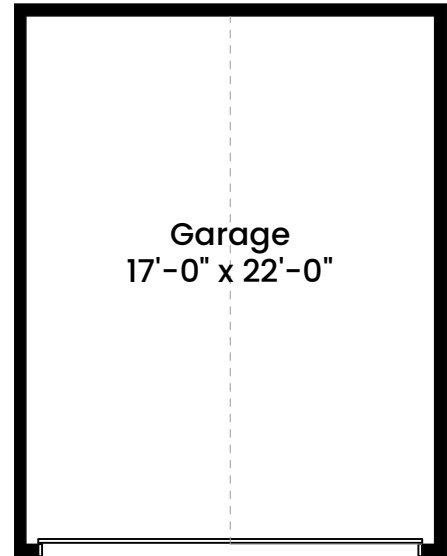


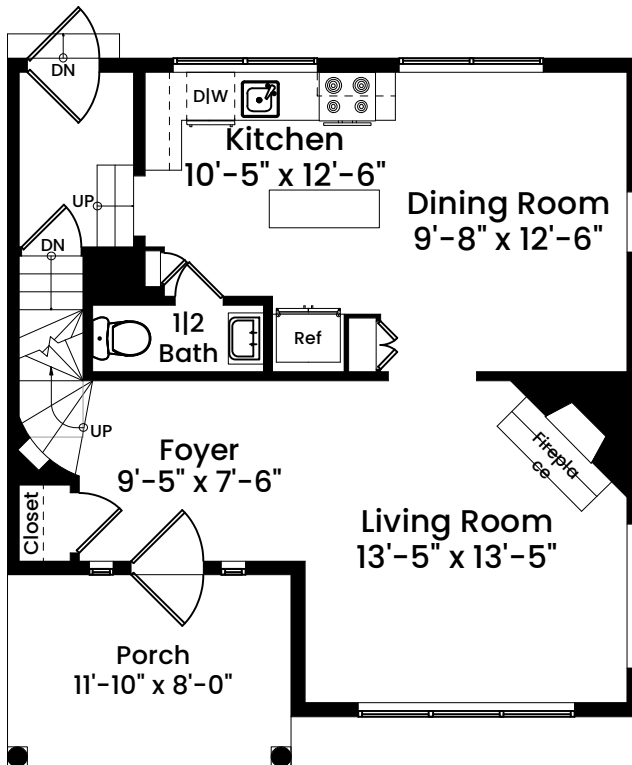
# 6 Alfred Stone Road | Providence, RI 02906

## GARAGE



## FIRST FLOOR

CEILING HEIGHT 8'-4"



### AREA CALCULATIONS

First Floor	650 SF
Second Floor	718 SF
Third Floor	310 SF
<b>Total Gross Living Area</b>	<b>1,678 SF</b>

Basement	623 SF
Third Floor Area Below 5'	163 SF
<b>Total Area</b>	<b>2,464 SF</b>

Architecturally drafted in January 2026 by:  
National Floor Plans (800) 328-0217  
Associate Member | American Institute of Architects  
Contact [www.nationalfloorplans.com](http://www.nationalfloorplans.com) for .dwg AutoCAD files  
or square footage questions about this property.



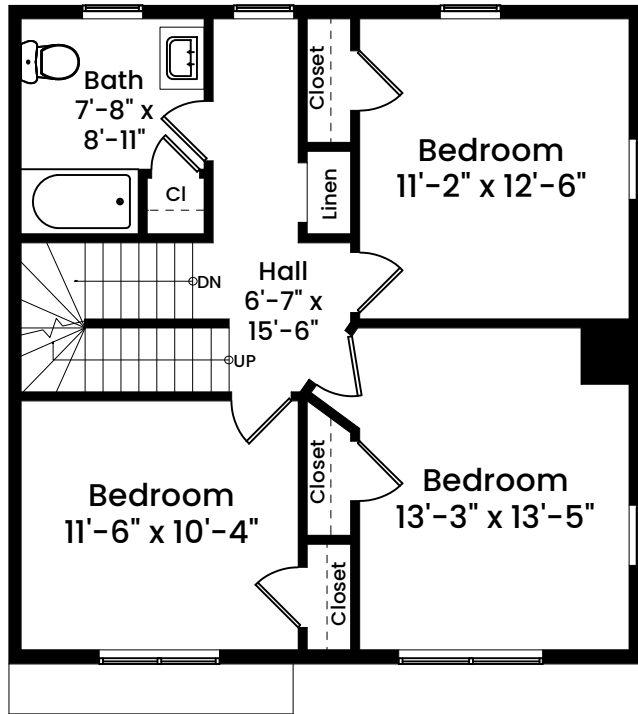
1 1 2 4 8  
Scale 1/8" = 1 foot

Dimensions are not guaranteed and are provided for informational purposes only.  
Individual room dimensions are not used to calculate overall square footage.  
National Floor Plans follows ANSI guidelines for calculating square footage.

# 6 Alfred Stone Road | Providence, RI 02906

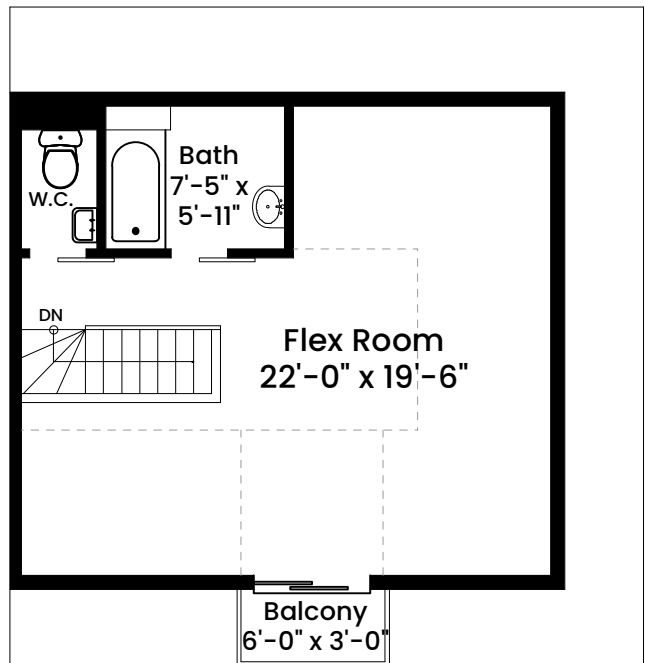
## SECOND FLOOR

CEILING HEIGHT 8'-1"



## THIRD FLOOR

CEILING HEIGHT 8'-4"



### AREA CALCULATIONS

First Floor	650 SF
Second Floor	718 SF
Third Floor	310 SF
Total Gross Living Area	1,678 SF
Basement	623 SF
Third Floor Area Below 5'	163 SF
Total Area	2,464 SF

Architecturally drafted in January 2026 by:  
 National Floor Plans (800) 328-0217  
 Associate Member | American Institute of Architects  
 Contact [www.nationalfloorplans.com](http://www.nationalfloorplans.com) for .dwg AutoCAD files  
 or square footage questions about this property.



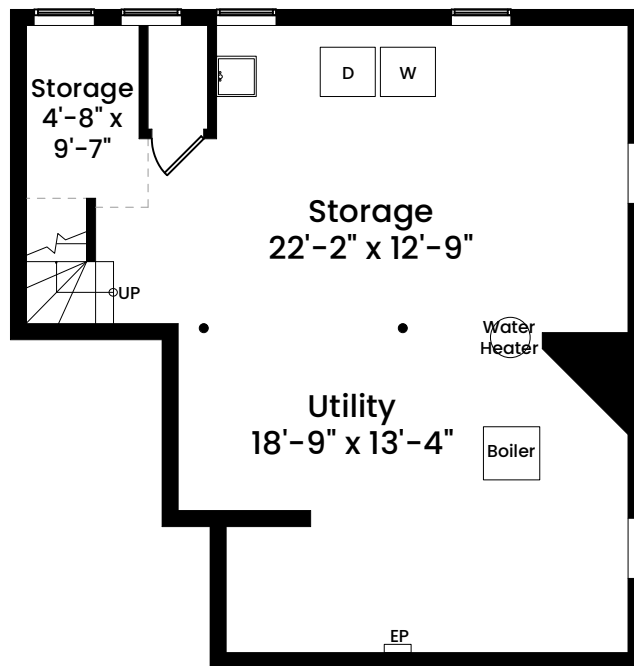
1 1 2 4 8  
 Scale 1/8" inch = 1 foot

Dimensions are not guaranteed and are provided for informational purposes only.  
 Individual room dimensions are not used to calculate overall square footage.  
 National Floor Plans follows ANSI guidelines for calculating square footage.

# 6 Alfred Stone Road | Providence, RI 02906

## **BASEMENT**

CEILING HEIGHT 7'-2"



### **AREA CALCULATIONS**

First Floor	650 SF
Second Floor	718 SF
Third Floor	310 SF
<b>Total Gross Living Area</b>	<b>1,678 SF</b>

Basement	623 SF
Third Floor Area Below 5'	163 SF
<b>Total Area</b>	<b>2,464 SF</b>

Architecturally drafted in January 2026 by:  
National Floor Plans (800) 328-0217  
Associate Member | American Institute of Architects  
Contact [www.nationalfloorplans.com](http://www.nationalfloorplans.com) for .dwg AutoCAD files  
or square footage questions about this property.



1 1 2 4 8  
Scale 1/8" inch = 1 foot

Dimensions are not guaranteed and are provided for informational purposes only.  
Individual room dimensions are not used to calculate overall square footage.  
National Floor Plans follows ANSI guidelines for calculating square footage.