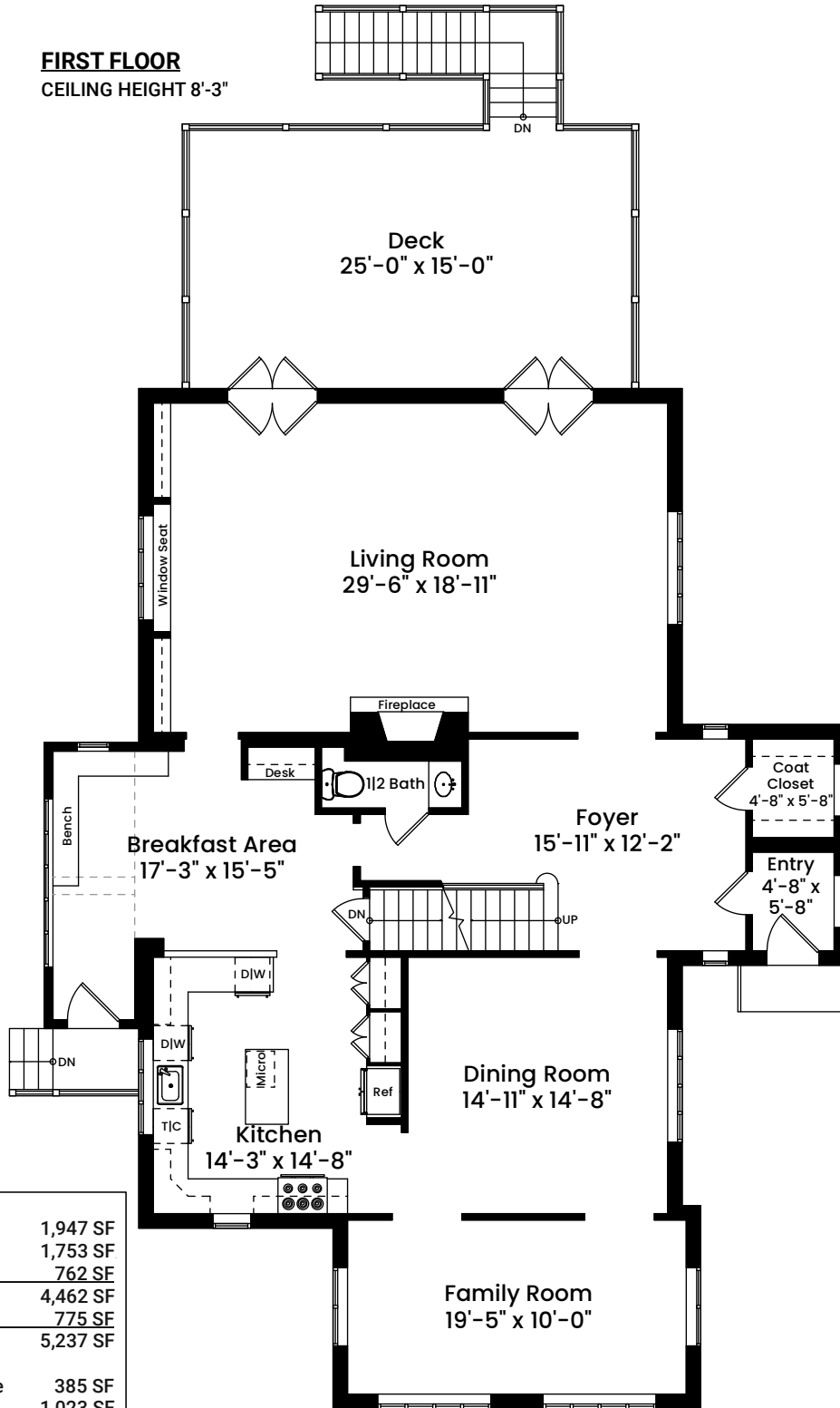
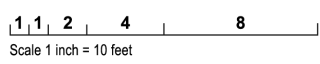


# 40 Dryden Avenue | Pawtucket, RI 02860

**FIRST FLOOR**  
CEILING HEIGHT 8'-3"



AREA CALCULATIONS	
First Floor	1,947 SF
Second Floor	1,753 SF
Third Floor	762 SF
Total Gross Living Area	4,462 SF
Lower Level Finished Area	775 SF
Total Finished Area	5,237 SF
Lower Level Utility   Storage	385 SF
Garage	1,023 SF
Area Below 5'	127 SF
Total Area	6,772 SF

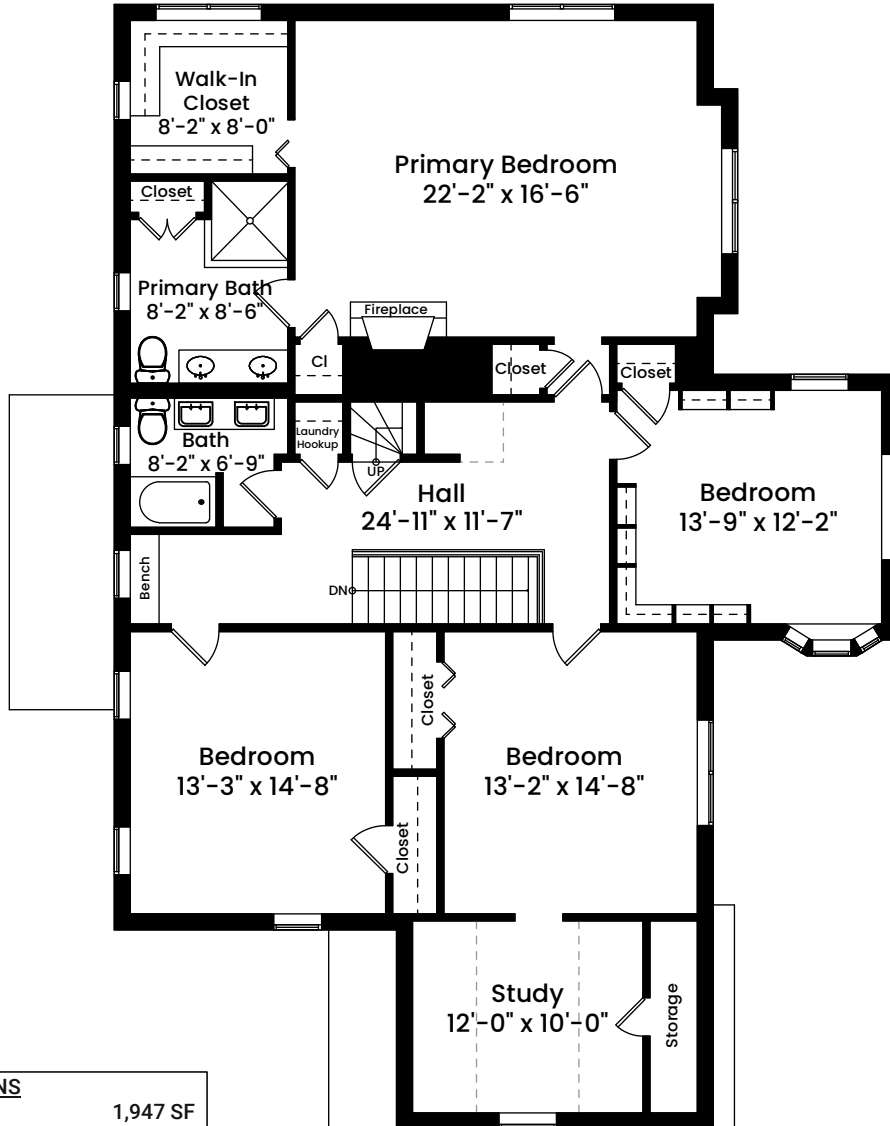


Architecturally drafted in May 2026 by:  
National Floor Plans (800) 328-0217  
Associate Member | American Institute of Architects  
Contact [www.nationalfloorplans.com](http://www.nationalfloorplans.com) for .dwg AutoCAD files  
or square footage questions about this property.

Dimensions are not guaranteed and are provided for informational purposes only.  
Individual room dimensions are not used to calculate overall square footage.  
National Floor Plans follows ANSI guidelines for calculating square footage.

# 40 Dryden Avenue | Pawtucket, RI 02860

## SECOND FLOOR CEILING HEIGHT 8'-1"



AREA CALCULATIONS	
First Floor	1,947 SF
Second Floor	1,753 SF
Third Floor	762 SF
<b>Total Gross Living Area</b>	<b>4,462 SF</b>
<b>Lower Level Finished Area</b>	<b>775 SF</b>
<b>Total Finished Area</b>	<b>5,237 SF</b>
Lower Level Utility   Storage	385 SF
Garage	1,023 SF
Area Below 5'	127 SF
<b>Total Area</b>	<b>6,772 SF</b>

Architecturally drafted in May 2026 by:  
 National Floor Plans (800) 328-0217  
 Associate Member | American Institute of Architects  
 Contact [www.nationalfloorplans.com](http://www.nationalfloorplans.com) for .dwg AutoCAD files  
 or square footage questions about this property.

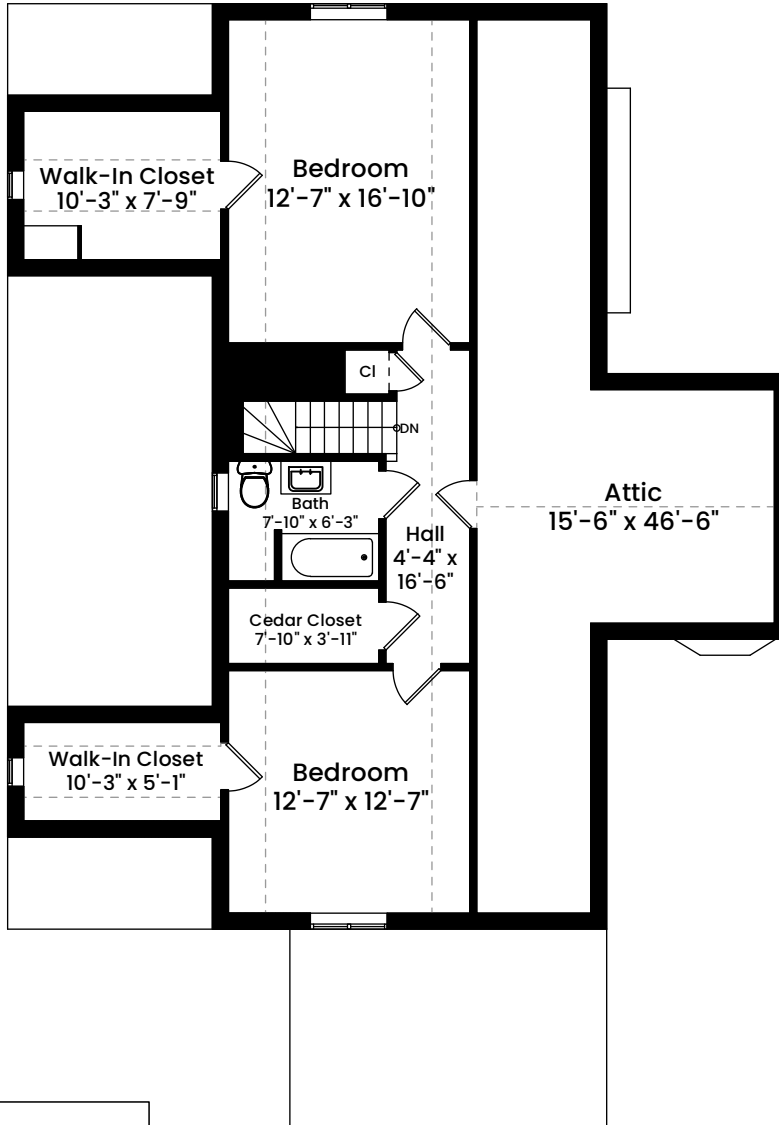


1 1 2 4 8  
 Scale 1 inch = 10 feet

Dimensions are not guaranteed and are provided for informational purposes only.  
 Individual room dimensions are not used to calculate overall square footage.  
 National Floor Plans follows ANSI guidelines for calculating square footage.

# 40 Dryden Avenue | Pawtucket, RI 02860

## THIRD FLOOR CEILING HEIGHT 7'-7"



AREA CALCULATIONS	
First Floor	1,947 SF
Second Floor	1,753 SF
Third Floor	762 SF
<b>Total Gross Living Area</b>	<b>4,462 SF</b>
<b>Lower Level Finished Area</b>	<b>775 SF</b>
<b>Total Finished Area</b>	<b>5,237 SF</b>
Lower Level Utility   Storage	385 SF
Garage	1,023 SF
Area Below 5'	127 SF
<b>Total Area</b>	<b>6,772 SF</b>

Architecturally drafted in May 2026 by:  
 National Floor Plans (800) 328-0217  
 Associate Member | American Institute of Architects  
 Contact [www.nationalfloorplans.com](http://www.nationalfloorplans.com) for .dwg AutoCAD files  
 or square footage questions about this property.

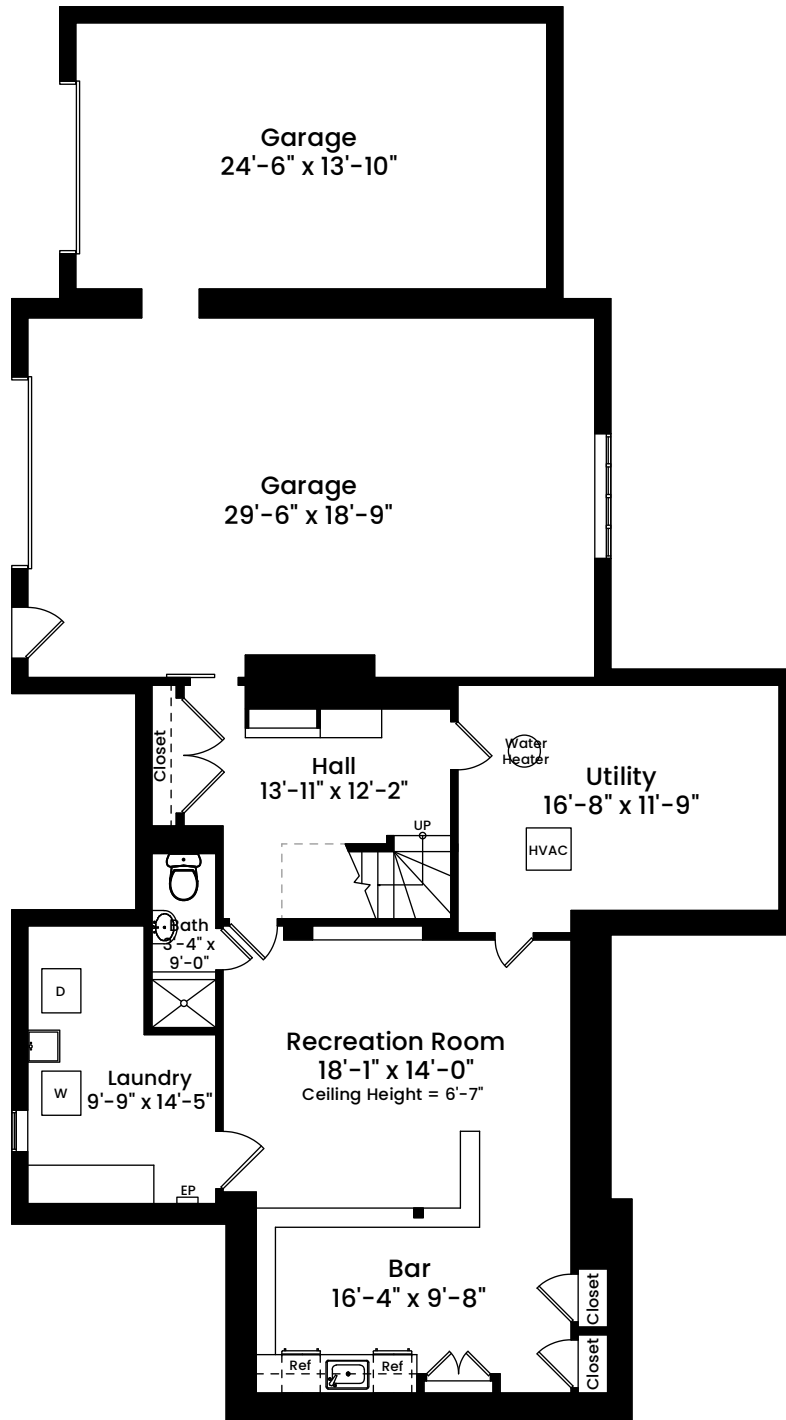


1 1 2 4 8  
 Scale 1 inch = 10 feet

Dimensions are not guaranteed and are provided for informational purposes only.  
 Individual room dimensions are not used to calculate overall square footage.  
 National Floor Plans follows ANSI guidelines for calculating square footage.

# 40 Dryden Avenue | Pawtucket, RI 02860

**LOWER LEVEL**  
CEILING HEIGHT 7'-10"



AREA CALCULATIONS	
First Floor	1,947 SF
Second Floor	1,753 SF
Third Floor	762 SF
Total Gross Living Area	4,462 SF
Lower Level Finished Area	775 SF
Total Finished Area	5,237 SF
Lower Level Utility   Storage	385 SF
Garage	1,023 SF
Area Below 5'	127 SF
Total Area	6,772 SF

Architecturally drafted in May 2026 by:  
National Floor Plans (800) 328-0217  
Associate Member | American Institute of Architects  
Contact [www.nationalfloorplans.com](http://www.nationalfloorplans.com) for .dwg AutoCAD files  
or square footage questions about this property.



Dimensions are not guaranteed and are provided for informational purposes only.  
Individual room dimensions are not used to calculate overall square footage.  
National Floor Plans follows ANSI guidelines for calculating square footage.