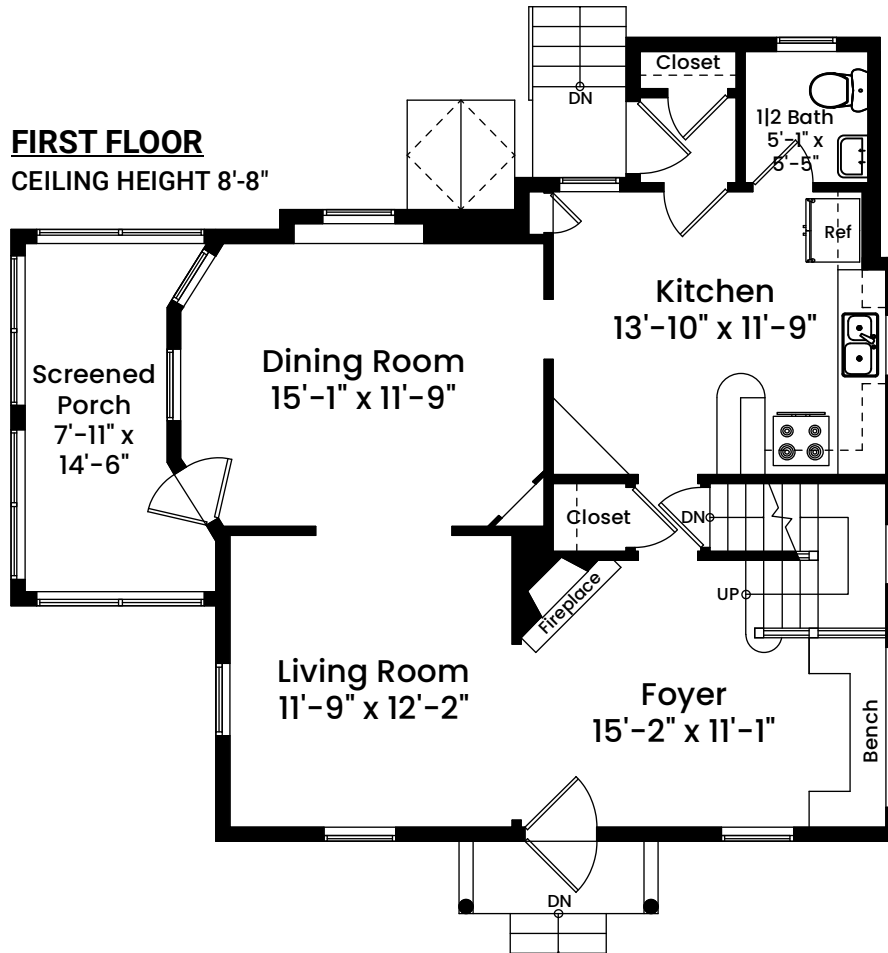


20 Summit Avenue | Providence, RI 02906

FIRST FLOOR CEILING HEIGHT 8'-8"



AREA CALCULATIONS	
First Floor	848 SF
Second Floor	800 SF
Third Floor	317 SF
Total Gross Living Area	1,965 SF
Basement	841 SF
Screened Porch	113 SF
Area Below 5'	195 SF
Total Area	3,114 SF

Architecturally drafted in June 2026 by:
 National Floor Plans (800) 328-0217
 Associate Member | American Institute of Architects
 Contact www.nationalfloorplans.com for .dwg AutoCAD files
 or square footage questions about this property.

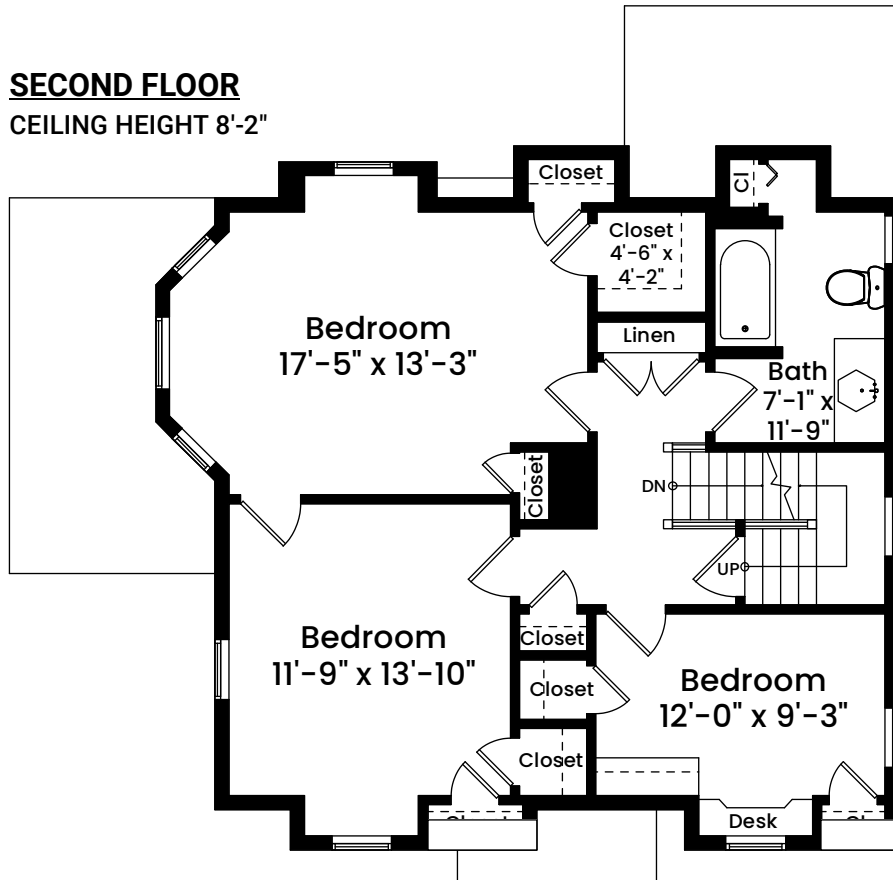


1 1 2 4 8
 Scale 1/8" inch = 1 foot

Dimensions are not guaranteed and are provided for informational purposes only.
 Individual room dimensions are not used to calculate overall square footage.
 National Floor Plans follows ANSI guidelines for calculating square footage.

20 Summit Avenue | Providence, RI 02906

SECOND FLOOR CEILING HEIGHT 8'-2"



AREA CALCULATIONS	
First Floor	848 SF
Second Floor	800 SF
Third Floor	317 SF
Total Gross Living Area	1,965 SF
Basement	841 SF
Screened Porch	113 SF
Area Below 5'	195 SF
Total Area	3,114 SF

Architecturally drafted in June 2026 by:
 National Floor Plans (800) 328-0217
 Associate Member | American Institute of Architects
 Contact www.nationalfloorplans.com for .dwg AutoCAD files
 or square footage questions about this property.

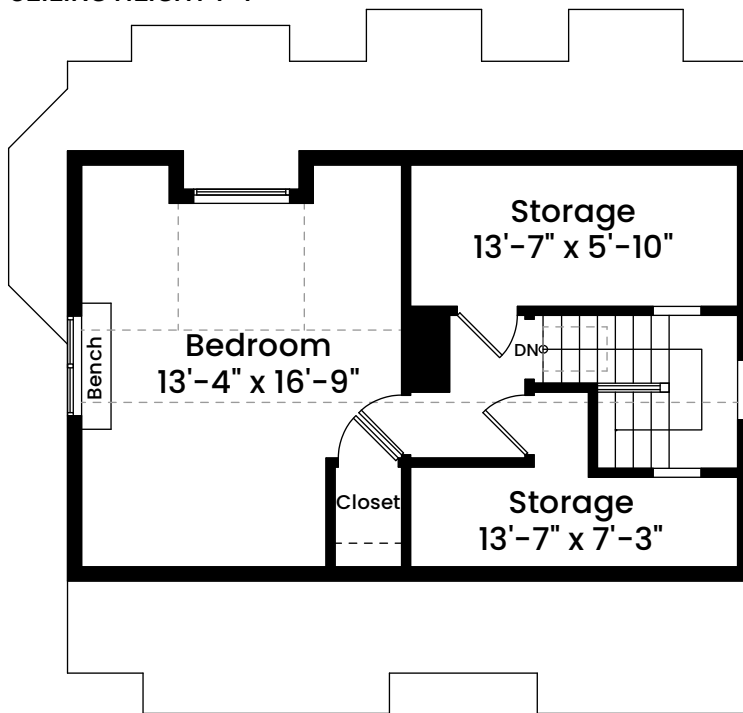


1 1 2 4 8
 Scale 1/8" inch = 1 foot

Dimensions are not guaranteed and are provided for informational purposes only.
 Individual room dimensions are not used to calculate overall square footage.
 National Floor Plans follows ANSI guidelines for calculating square footage.

20 Summit Avenue | Providence, RI 02906

THIRD FLOOR CEILING HEIGHT 7'-7"



AREA CALCULATIONS

First Floor	848 SF
Second Floor	800 SF
Third Floor	317 SF
Total Gross Living Area	1,965 SF
Basement	841 SF
Screened Porch	113 SF
Area Below 5'	195 SF
Total Area	3,114 SF

Architecturally drafted in June 2026 by:
National Floor Plans (800) 328-0217
Associate Member | American Institute of Architects
Contact www.nationalfloorplans.com for .dwg AutoCAD files
or square footage questions about this property.



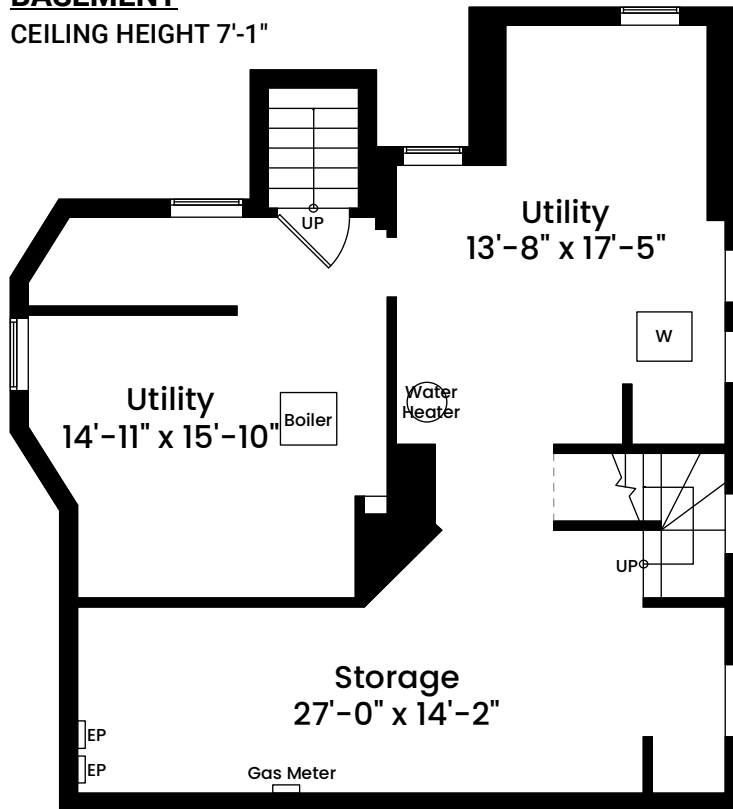
1 1 2 4 8
Scale 1/8" inch = 1 foot

Dimensions are not guaranteed and are provided for informational purposes only.
Individual room dimensions are not used to calculate overall square footage.
National Floor Plans follows ANSI guidelines for calculating square footage.

20 Summit Avenue | Providence, RI 02906

BASEMENT

CEILING HEIGHT 7'-1"



<u>AREA CALCULATIONS</u>	
First Floor	848 SF
Second Floor	800 SF
Third Floor	317 SF
Total Gross Living Area	1,965 SF
Basement	841 SF
Screened Porch	113 SF
Area Below 5'	195 SF
Total Area	3,114 SF

Architecturally drafted in June 2026 by:
 National Floor Plans (800) 328-0217
 Associate Member | American Institute of Architects
 Contact www.nationalfloorplans.com for .dwg AutoCAD files
 or square footage questions about this property.



1 1 2 4 8
 Scale 1/8" inch = 1 foot

Dimensions are not guaranteed and are provided for informational purposes only.
 Individual room dimensions are not used to calculate overall square footage.
 National Floor Plans follows ANSI guidelines for calculating square footage.