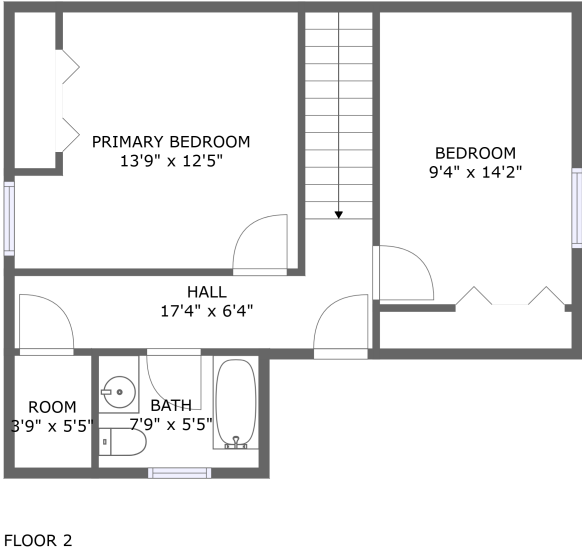
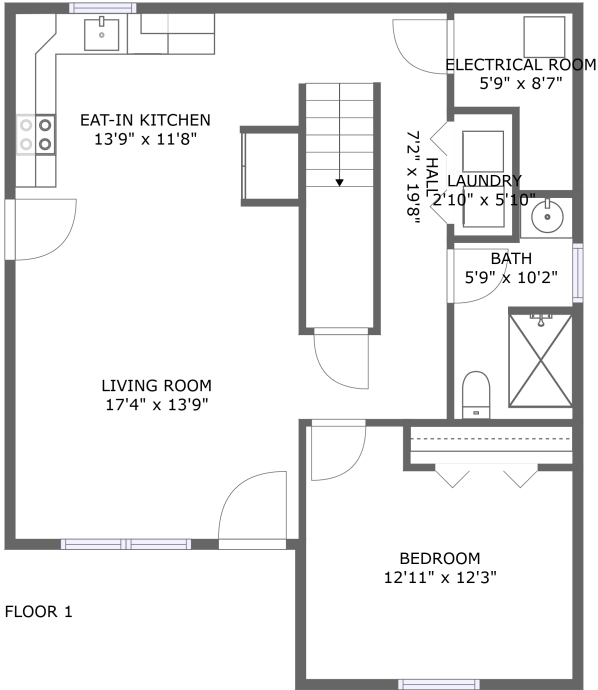



131 Poco Drive, Tamworth, Carroll County, New Hampshire, United States, 03886



Property summary

 **0** Garages

 **3** Bedrooms

 **2** Bathrooms

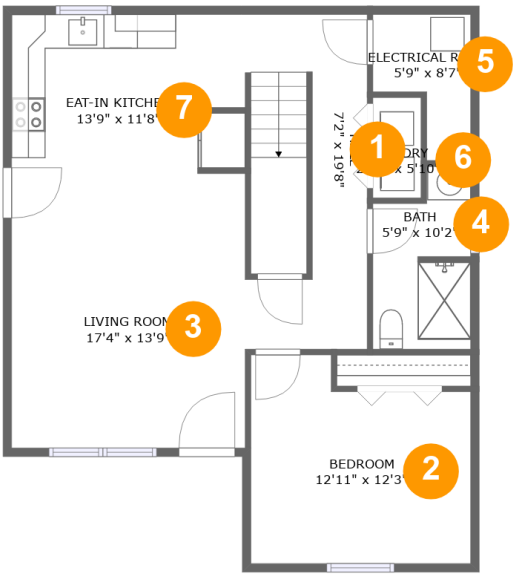
 **0** Half baths

 **2** Floors

 **1,351** Gross living area sqft

 **1,395** Total sqft

131 Poco Drive, Tamworth, Carroll County, New Hampshire, United States, 03886

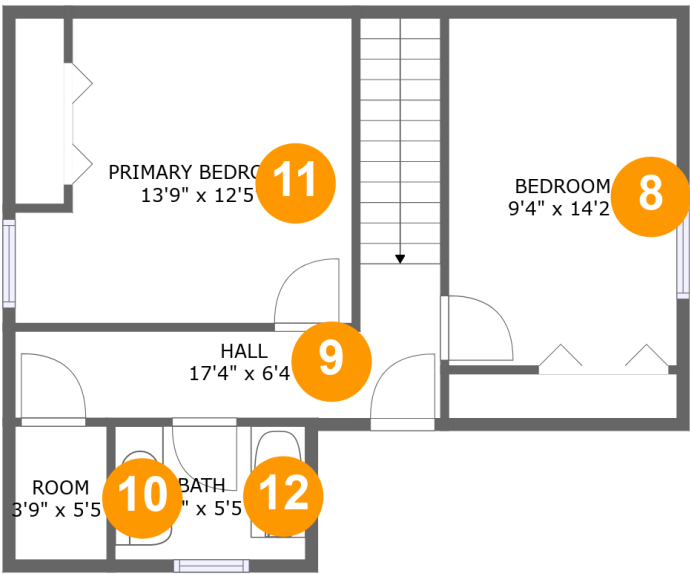


Room dimensions

Floor 1 Total sqft: 836 Living area: 792

#		Dimensions	sqft	Counted as living area
1	Hall	7'2" x 19'8"	117 sq. ft	Yes
2	Bedroom	12'11" x 12'3"	141 sq. ft	Yes
3	Living Room	17'4" x 13'9"	204 sq. ft	Yes
4	Bath	5'9" x 10'2"	54 sq. ft	Yes
5	Electrical Room	5'9" x 8'7"	37 sq. ft	No
6	Laundry	2'10" x 5'10"	17 sq. ft	Yes
7	Eat-in Kitchen	13'9" x 11'8"	159 sq. ft	Yes

131 Poco Drive, Tamworth, Carroll County, New Hampshire, United States, 03886



Room dimensions

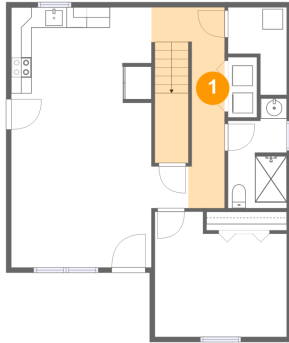
Floor 2

Total sqft: 559 Living area: 559

#		Dimensions	sqft	Counted as living area
8	Bedroom	9'4" x 14'2"	132 sq. ft	Yes
9	Hall	17'4" x 6'4"	103 sq. ft	Yes
10	Room	3'9" x 5'5"	20 sq. ft	Yes
11	Primary Bedroom	13'9" x 12'5"	152 sq. ft	Yes
12	Bath	7'9" x 5'5"	42 sq. ft	Yes

**131 Poco Drive, Tamworth, Carroll County, New
Hampshire, United States, 03886**

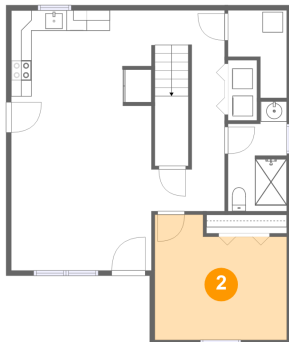
1 Floor 1 - Hall



Dimensions: 7'2" x 19'8"
Area: 117 sq. ft
Counted as living area: Yes

Heated: Yes
Finished: Yes
Enclosed: Yes
Contiguous: Yes
Permitted: Yes
Wet space: No
Addition: No
Conversion: No

2 Floor 1 - Bedroom

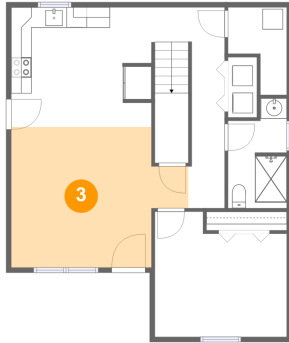


Dimensions: 12'11" x 12'3"
Area: 141 sq. ft
Counted as living area: Yes

Heated: Yes
Finished: Yes
Enclosed: Yes
Contiguous: Yes
Permitted: Yes
Wet space: No
Addition: No
Conversion: No

131 Poco Drive, Tamworth, Carroll County, New
Hampshire, United States, 03886

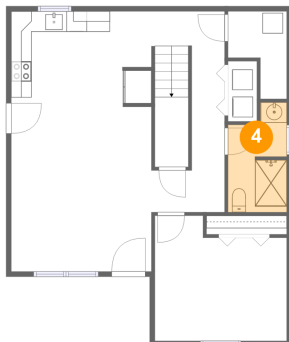
3 Floor 1 - Living Room



Dimensions: 17'4" x 13'9"
Area: 204 sq. ft
Counted as living area: Yes

Heated: Yes
Finished: Yes
Enclosed: Yes
Contiguous: Yes
Permitted: Yes
Wet space: No
Addition: No
Conversion: No

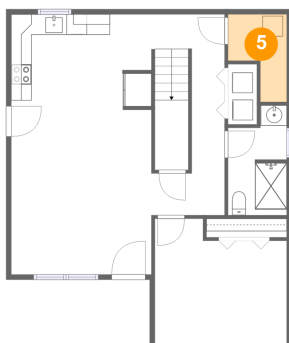
4 Floor 1 - Bath



Dimensions: 5'9" x 10'2"
Area: 54 sq. ft
Counted as living area: Yes

Heated: Yes
Finished: Yes
Enclosed: Yes
Contiguous: Yes
Permitted: Yes
Wet space: Yes
Addition: No
Conversion: No

5 Floor 1 - Electrical Room

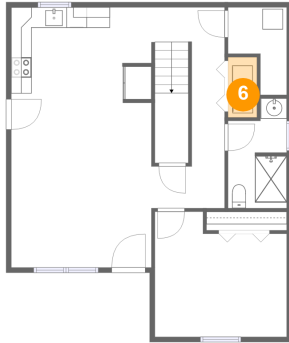


Dimensions: 5'9" x 8'7"
Area: 37 sq. ft
Counted as living area: No

Heated: No
Finished: No
Enclosed: Yes
Contiguous: Yes
Permitted: Yes
Wet space: No
Addition: No
Conversion: No

131 Poco Drive, Tamworth, Carroll County, New
Hampshire, United States, 03886

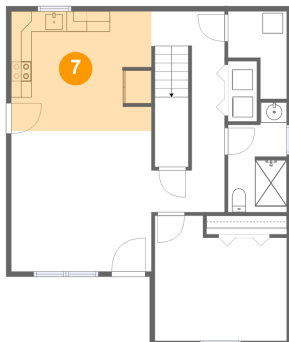
6 Floor 1 - Laundry



Dimensions: 2'10" x 5'10"
Area: 17 sq. ft
Counted as living area: Yes

Heated: Yes
Finished: Yes
Enclosed: Yes
Contiguous: Yes
Permitted: Yes
Wet space: No
Addition: No
Conversion: No

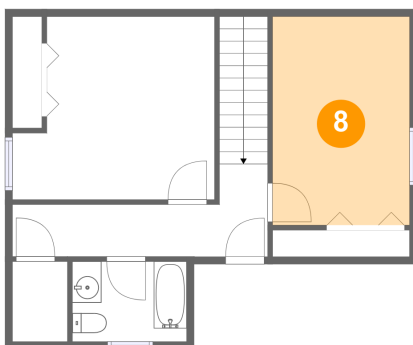
7 Floor 1 - Eat-in Kitchen



Dimensions: 13'9" x 11'8"
Area: 159 sq. ft
Counted as living area: Yes

Heated: Yes
Finished: Yes
Enclosed: Yes
Contiguous: Yes
Permitted: Yes
Wet space: No
Addition: No
Conversion: No

8 Floor 2 - Bedroom

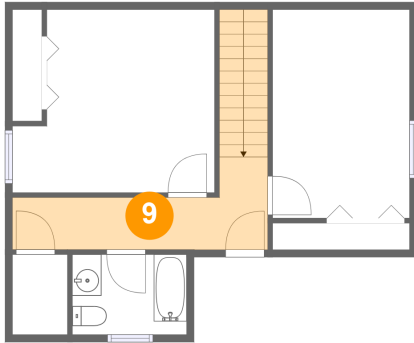


Dimensions: 9'4" x 14'2"
Area: 132 sq. ft
Counted as living area: Yes

Heated: Yes
Finished: Yes
Enclosed: Yes
Contiguous: Yes
Permitted: Yes
Wet space: No
Addition: No
Conversion: No

131 Poco Drive, Tamworth, Carroll County, New
Hampshire, United States, 03886

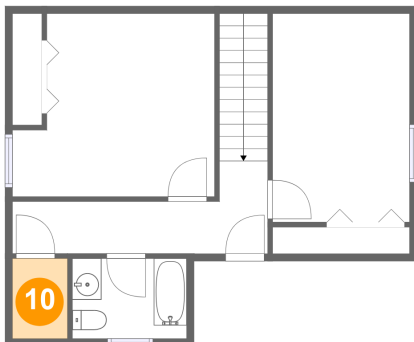
9 Floor 2 - Hall



Dimensions: 17'4" x 6'4"
Area: 103 sq. ft
Counted as living area: Yes

Heated: Yes
Finished: Yes
Enclosed: Yes
Contiguous: Yes
Permitted: Yes
Wet space: No
Addition: No
Conversion: No

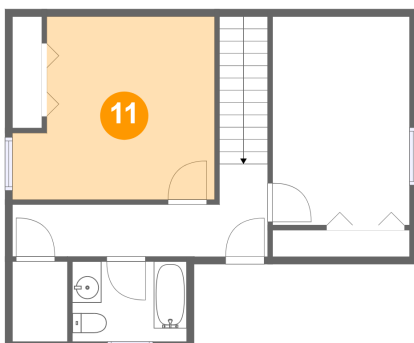
10 Floor 2 - Room



Dimensions: 3'9" x 5'5"
Area: 20 sq. ft
Counted as living area: Yes

Heated: Yes
Finished: Yes
Enclosed: Yes
Contiguous: Yes
Permitted: Yes
Wet space: No
Addition: No
Conversion: No

11 Floor 2 - Primary Bedroom

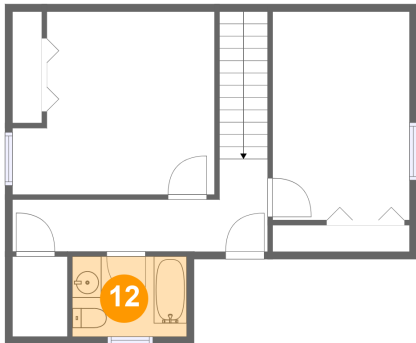


Dimensions: 13'9" x 12'5"
Area: 152 sq. ft
Counted as living area: Yes

Heated: Yes
Finished: Yes
Enclosed: Yes
Contiguous: Yes
Permitted: Yes
Wet space: No
Addition: No
Conversion: No

131 Poco Drive, Tamworth, Carroll County, New
Hampshire, United States, 03886

12 Floor 2 - Bath



Dimensions: 7'9" x 5'5"
Area: 42 sq. ft
Counted as living area: Yes

Heated: Yes
Finished: Yes
Enclosed: Yes
Contiguous: Yes
Permitted: Yes
Wet space: Yes
Addition: No
Conversion: No