

25 Page Avenue, Asheville



THE
REAL
ESTATE
CENTER

Jay Lurie

Cell: 828-216-8462

Office: 828-255-4663

Lurie.Jay@gmail.com

159 S Lexington, Asheville, NC 28801



Executive Summary

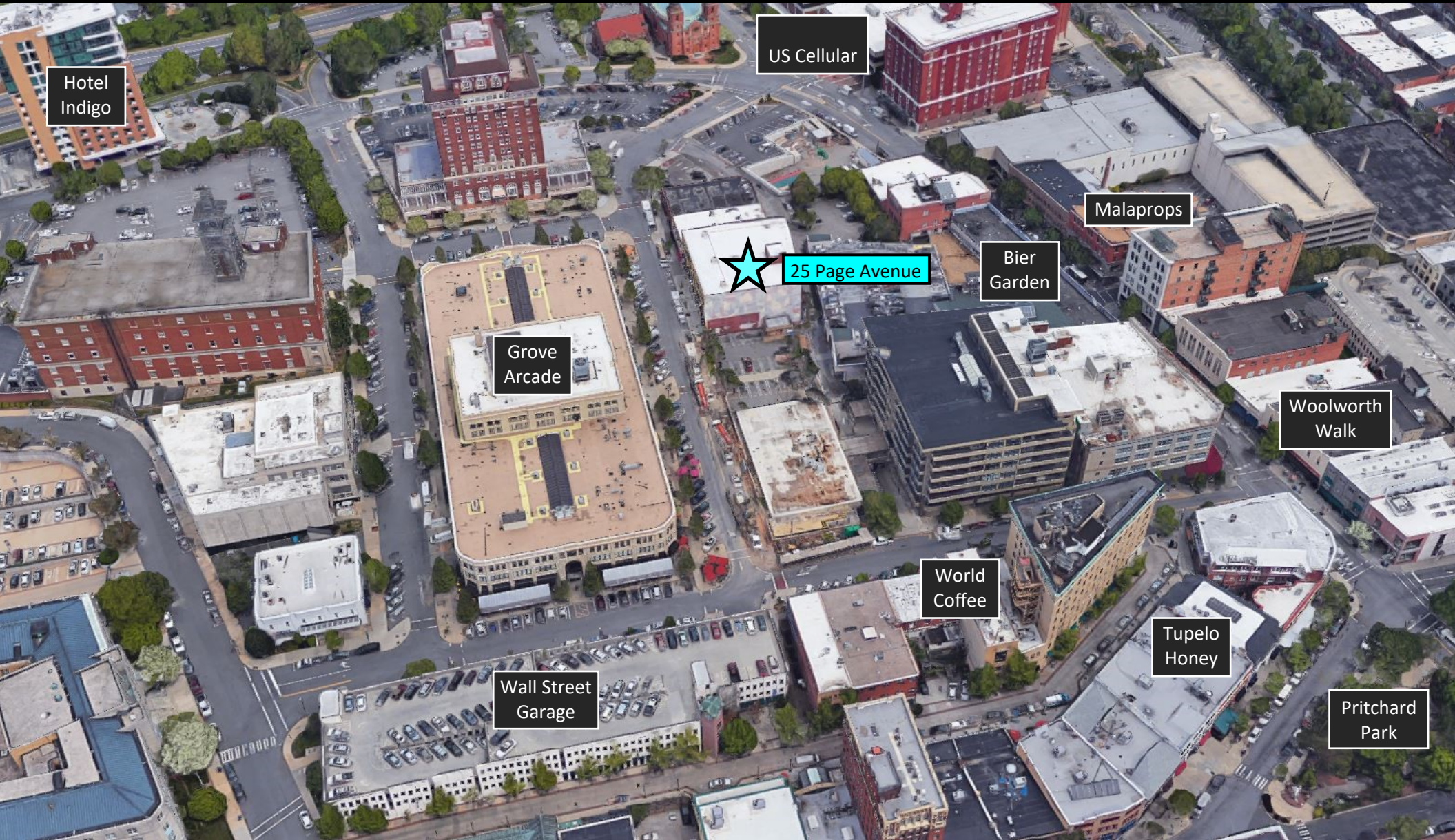
- Great retail across from The Grove Arcade
- Adjacent to the new Cambria Suites Hotel
- Perfect for small retail shops or one large footprint
- Tall ceilings, glass store front additions
- Minimum SF available: 1080 SF
- Maximum SF available: 6350 SF
- Fully sprinkled

Retail life at the once historic Pearlman Furniture Store is back for revitalization. These boutique store front spaces will be delivered in the 4th quarter of 2019. These spaces will offer store front glass, tall ceilings, refinished original hard wood floors and shared common bathrooms.



Unit	SF	\$/SF	Terms	\$/Month
101	890	\$25	NNN Cam: \$3/SF	\$1854.17
102	1080	\$25	NNN Cam: \$3/SF	\$2250.00
103	1754	\$25	NNN Cam: \$3/SF	\$3654.17
104	1130	\$25	NNN Cam: \$3/SF	\$2354.17
105	1496	\$25	NNN Cam: \$3/SF	\$3116.67
106	974	\$25	NNN Cam: \$3/SF	\$2029.17

Downtown Asheville



Hotel Indigo

US Cellular

Malaprops

Bier Garden

25 Page Avenue

Grove Arcade

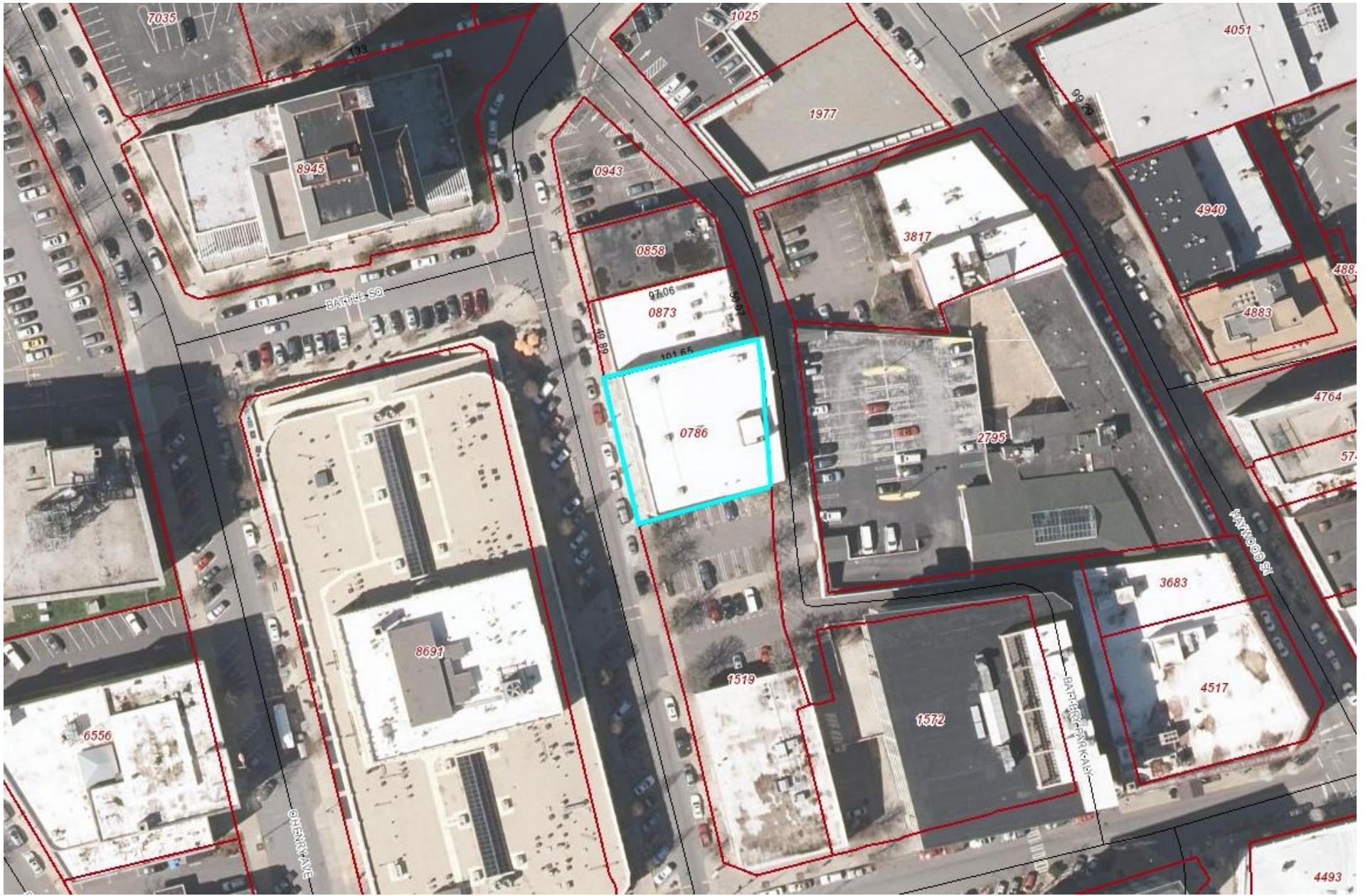
Woolworth Walk

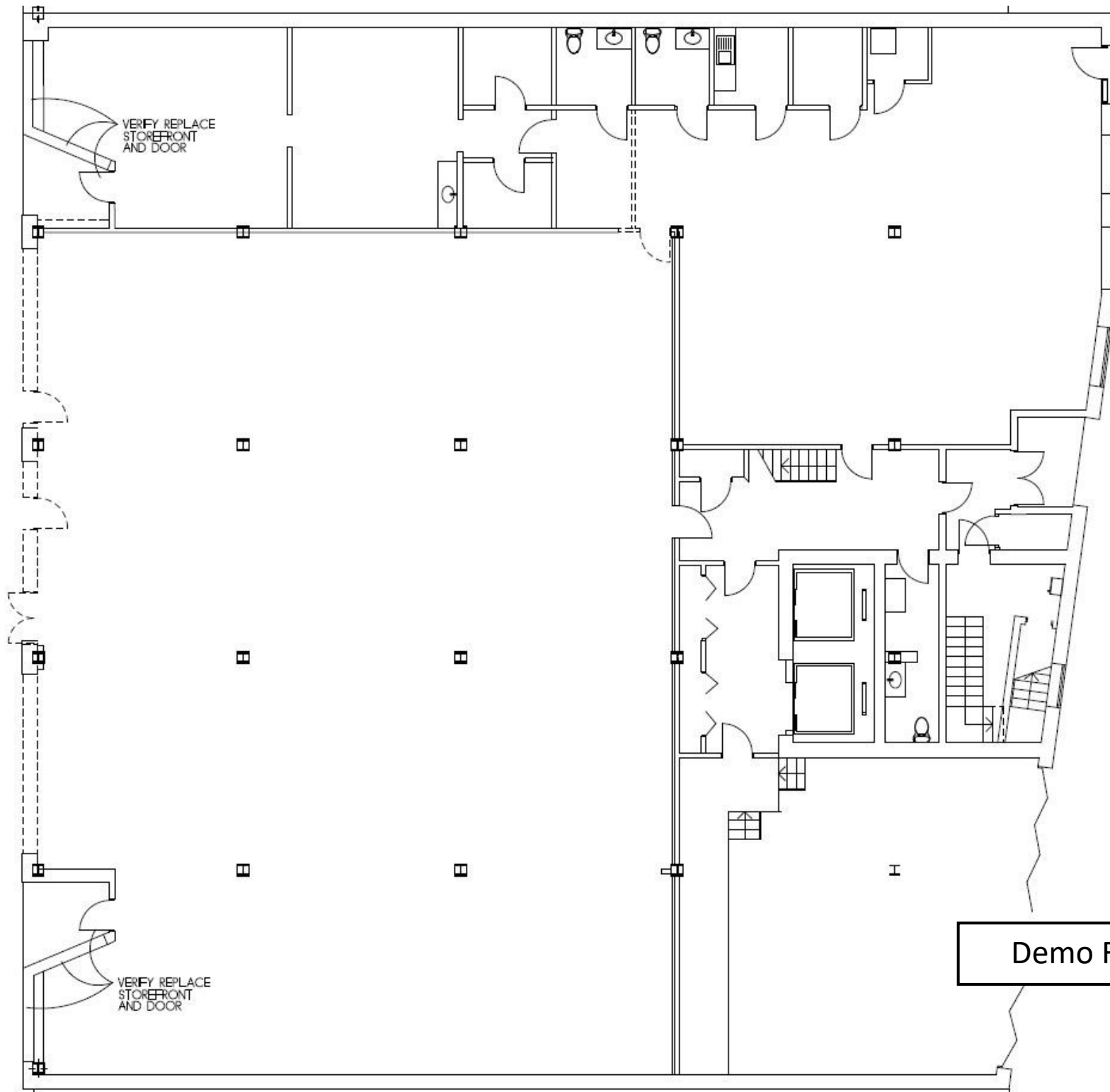
World Coffee

Tupelo Honey

Pritchard Park

Wall Street Garage





Demo Floor Plan