

# 521 College Street, Asheville - For Sale/Lease



THE  
REAL  
ESTATE  
CENTER

**Jay Lurie**  
Cell: 828-216-8462  
Office: 828-255-4663  
Lurie.Jay@gmail.com  
159 S Lexington, Asheville, NC 28801





# Executive Summary

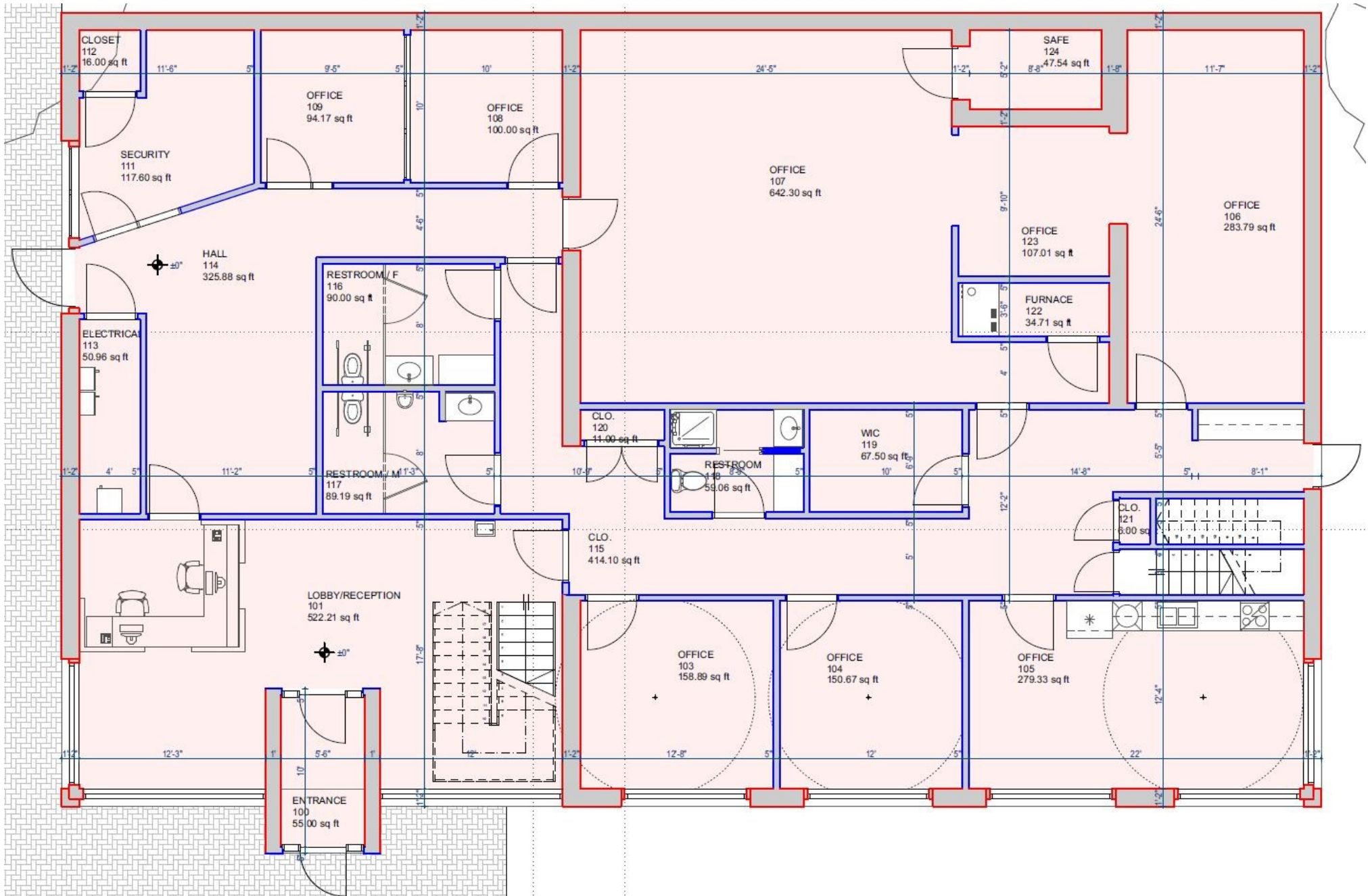
521 College St. is located just outside the Central Business District of Downtown Asheville. Allowing for 48 parking spaces and just under 8000 SF of office space, this opportunity offers companies the opportunity for consolidation and/or future expansion. Take advantage of the great visibility, high traffic count and walkability to downtown.

- Sale Price: \$2,995,000
- Lease Price: \$16 / SF
- Size: 7983 SF (see floor plan)
- 48 parking spaces
- Over an acre of land
- 2 story brick building

Click [HERE](#) for drone video!

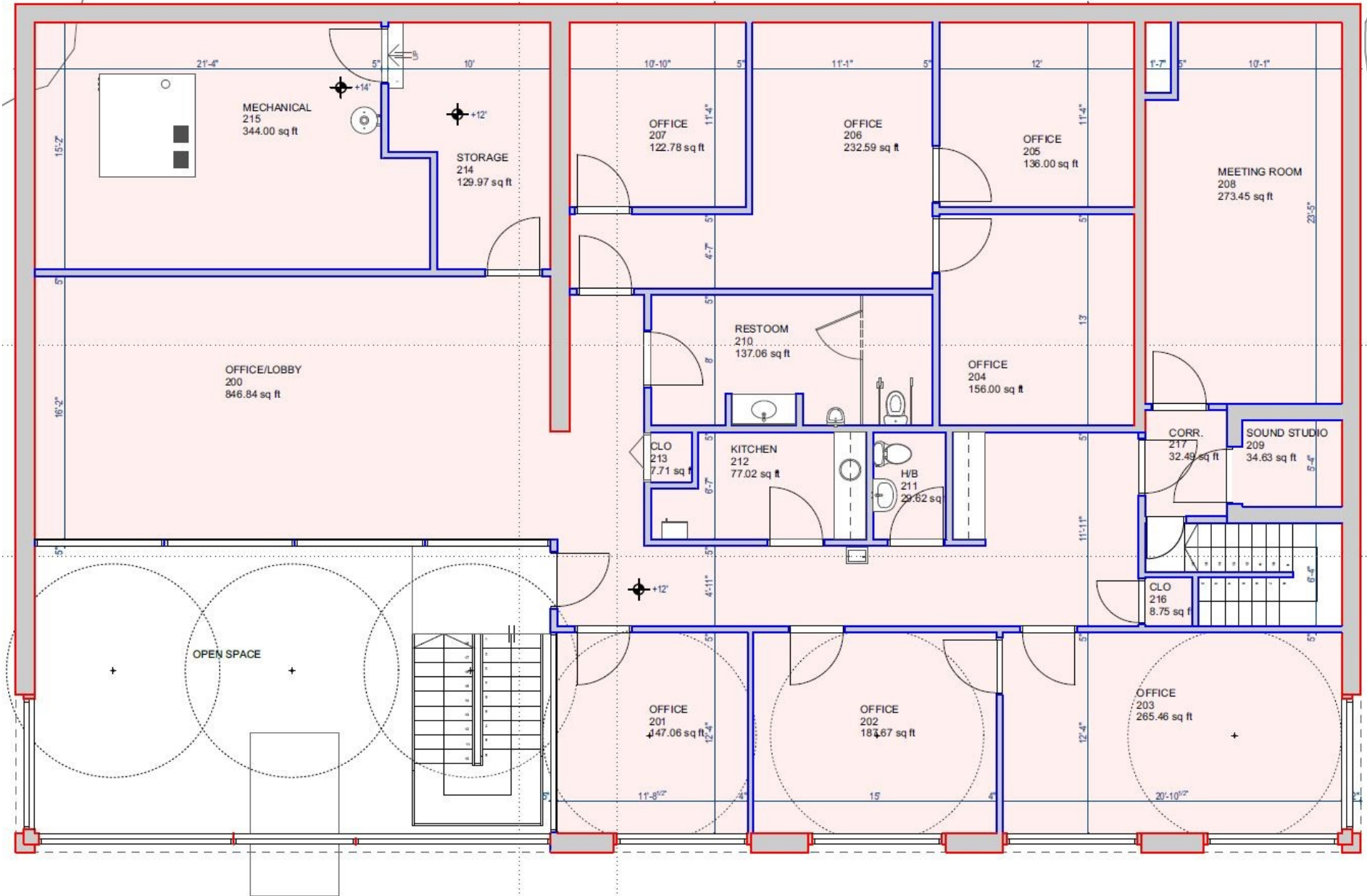


# First Floor: 4341 Square Feet





# Second Floor: 3642 Square Feet









**R**  
RENAISSANCE  
ASHEVILLE HOTEL

521 College

***Downtown Asheville***

**Hilton**  
Garden Inn

Courthouse

Pack  
Square  
Park







148.69  
63.5  
66.5  
5261  
136

159.97  
160.74  
140.05  
180  
165.63  
188.62  
59.36  
50.94  
102.28  
101.78  
143.4  
61.6  
8274  
140.58  
92.12

7589  
165.63  
188.62  
102.28  
137.8  
143.4  
8306  
136  
102.59  
37.5  
0200  
116  
0252  
42

165.63  
188.62  
174.16  
46.13  
46  
0362  
88  
1218  
1370  
288.61  
70  
198.1  
65  
260

270.61  
189.9  
108.42  
93.5  
2426  
57.5  
69.25  
0310  
85.6  
0362  
88  
1218  
1370  
288.61  
70  
198.1  
65  
260

25.88  
79.53  
20.61  
3661  
57.6  
88.8  
2585  
72.05  
105  
130.4  
34.1  
70.16  
51.5  
172  
102.13  
3458  
102.99  
3442  
65  
102.04  
37.04  
26.91  
3364  
65  
125.59  
3312  
3364  
65  
3168  
112  
140  
140

25.88  
79.53  
20.61  
3661  
57.6  
88.8  
2585  
72.05  
105  
130.4  
34.1  
70.16  
51.5  
172  
102.13  
3458  
102.99  
3442  
65  
102.04  
37.04  
26.91  
3364  
65  
125.59  
3312  
3364  
65  
3168  
112  
140  
140

25.88  
79.53  
20.61  
3661  
57.6  
88.8  
2585  
72.05  
105  
130.4  
34.1  
70.16  
51.5  
172  
102.13  
3458  
102.99  
3442  
65  
102.04  
37.04  
26.91  
3364  
65  
125.59  
3312  
3364  
65  
3168  
112  
140  
140

25.88  
79.53  
20.61  
3661  
57.6  
88.8  
2585  
72.05  
105  
130.4  
34.1  
70.16  
51.5  
172  
102.13  
3458  
102.99  
3442  
65  
102.04  
37.04  
26.91  
3364  
65  
125.59  
3312  
3364  
65  
3168  
112  
140  
140

25.88  
79.53  
20.61  
3661  
57.6  
88.8  
2585  
72.05  
105  
130.4  
34.1  
70.16  
51.5  
172  
102.13  
3458  
102.99  
3442  
65  
102.04  
37.04  
26.91  
3364  
65  
125.59  
3312  
3364  
65  
3168  
112  
140  
140

