

## EXECUTIVE SUMMARY

### 863 HAYWOOD ROAD | ASHEVILLE

Freestanding retail building with parking lot on busy Haywood Road in popular West Asheville. Walking distance to Izzy's, Isis Music Hall, The Village on Haywood, Universal Joint, Westville Pub, West End Bakery, and The Hop West. Can be assembled with neighboring properties to make up 1.09 +/- acres.

- 100' Haywood Road Frontage
- Approximately 0.31 acres
- HR-3CRDR Zoning
- Offered at \$975,000

865 Haywood Road - MLS# 3707560

List Price: \$295,000

Acreage: Approximately 0.38

889 Haywood Road - MLS# 3777422

List Price: \$250,000

Acreage: Approximately 0.40

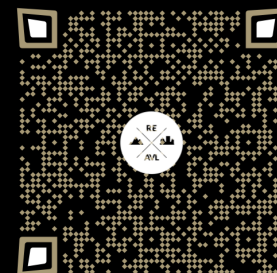
Total Assemblage Price: \$1,520,000

Total Assemblage Acreage: 1.09 +/- acres



**SCOTT CARTER**  
BROKER | REALTOR

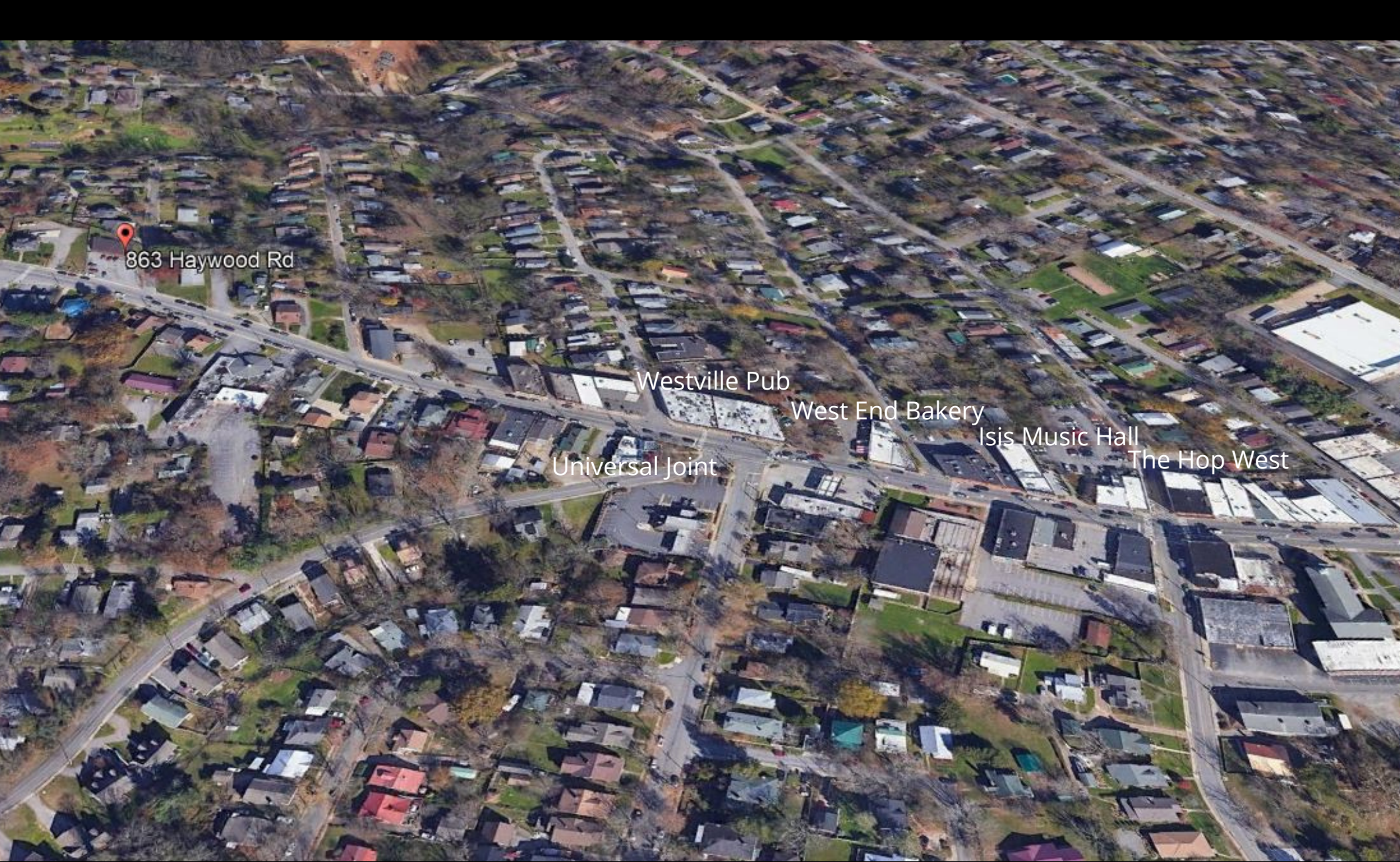
CELL: +1 (828) 215-9701  
OFFICE: +1 (828) 255-4663  
SCOTTCARTER@RECENTER.COM  
159 S. LEXINGTON AVE.  
ASHEVILLE, NC 28801  
WWW.RECENTER.COM











863 Haywood Rd

Westville Pub

West End Bakery

Isis Music Hall

The Hop West

Universal Joint



THE  
REAL  
ESTATE  
CENTER

SPECIALIZING IN ASHEVILLE'S URBAN MARKET

