

# *124 College Street, Downtown Asheville*



— THE —  
**REAL  
ESTATE**  
— CENTER —

[AERIAL TOUR / 3D TOUR](#)  
[MLS LISTING](#)

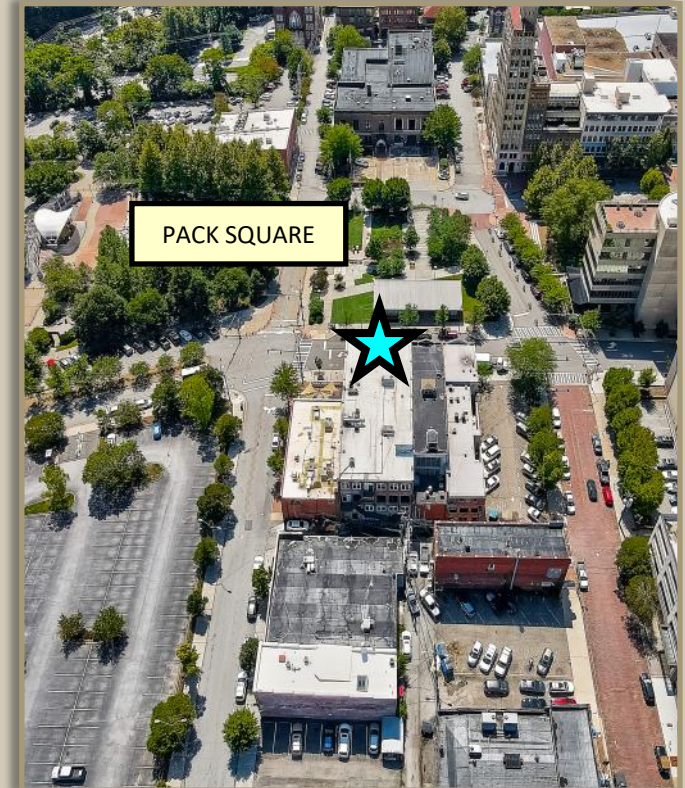
**Scott Carter**  
Cell: 828-215-9701  
Office: 828-255-4663  
[scottcarter@recenter.com](mailto:scottcarter@recenter.com)  
[www.recenter.com](http://www.recenter.com)



# Executive Summary

## DOWNTOWN COMMERCIAL LOFT-LIKE SPACE ON PACK SQUARE PARK

Great downtown location near City of Asheville Parking garage on College Street. Located in a beautifully constructed circa 1912 historic building. Building is Handicap accessible with elevator access. Formerly the Blanton school building. Across the street from **Pack Square**, a high traffic area. **Pack Square** is host to numerous festivals and free activities throughout the year such as Shindig on the Green, Art in the Park, LEAF Downtown and others. It is also home to SplashVille an interactive water feature, keeping it active day and night. Available spaces are located on the third floor and the lower level/basement with elevator access and additional alley entrance. Nearby to public parking garages and street parking. Located in between Mikayo House and Twisted Laurel.



### Available Units for Lease

Space	Square Feet	Base Rent / month	Lease Type
3rd (Top) Floor	6,000	\$8,000	NNN
Lower Level / Basement	3,702	\$2,500	NNN

### ZONING

CBD - Central Business District - The intent of the CBD zone is to create, maintain, and enhance areas of the Central Business District appropriate for a wide range of ground-floor office and other commercial activities. Upper-story spaces are intended to be available for a wide range of residential and office or other commercial activities. A high priority is placed on design, integrating new uses into and with existing architecture in a respectful and cohesive manner.

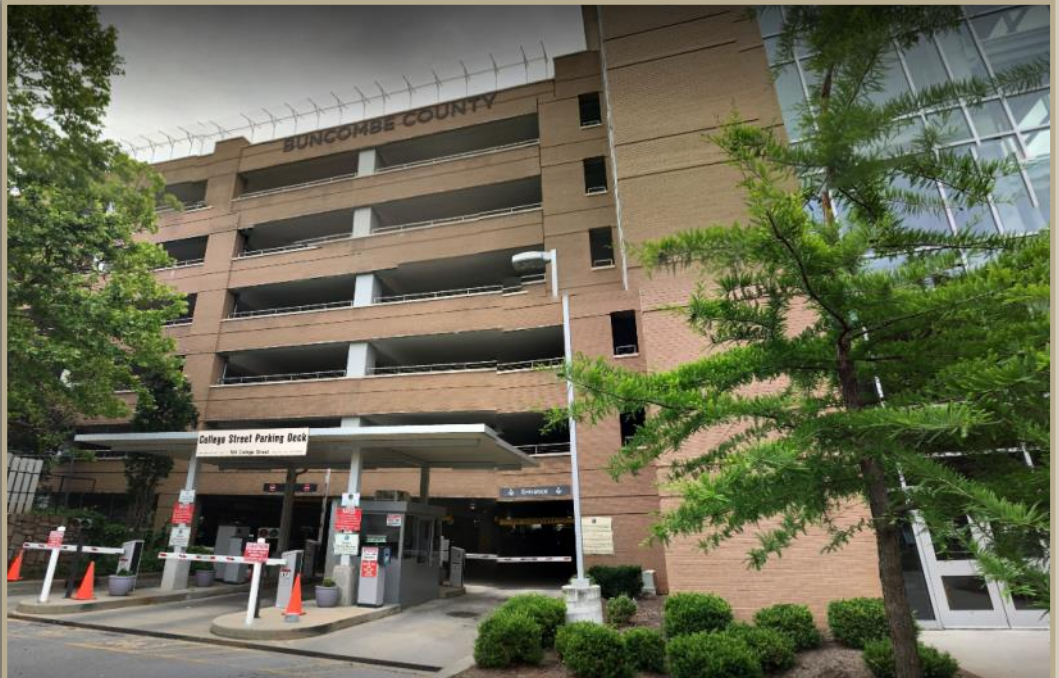
## CLICK LINKS BELOW TO VIEW MORE INFORMATION

[PROPERTY WEBSITE](#)[AERIAL TOUR](#)

### 3rd Floor

[3D TOUR](#)[MLS LISTING](#)

### Lower Level

[3D TOUR](#)[MLS LISTING](#)

### Parking Garages

The City of Asheville operates six parking garages ([click here for real-time space availability](#)); each is open for public parking 24/7, and offers hourly, daily, and monthly parking. The hourly rates in all garages are (as of 9/10/2021):

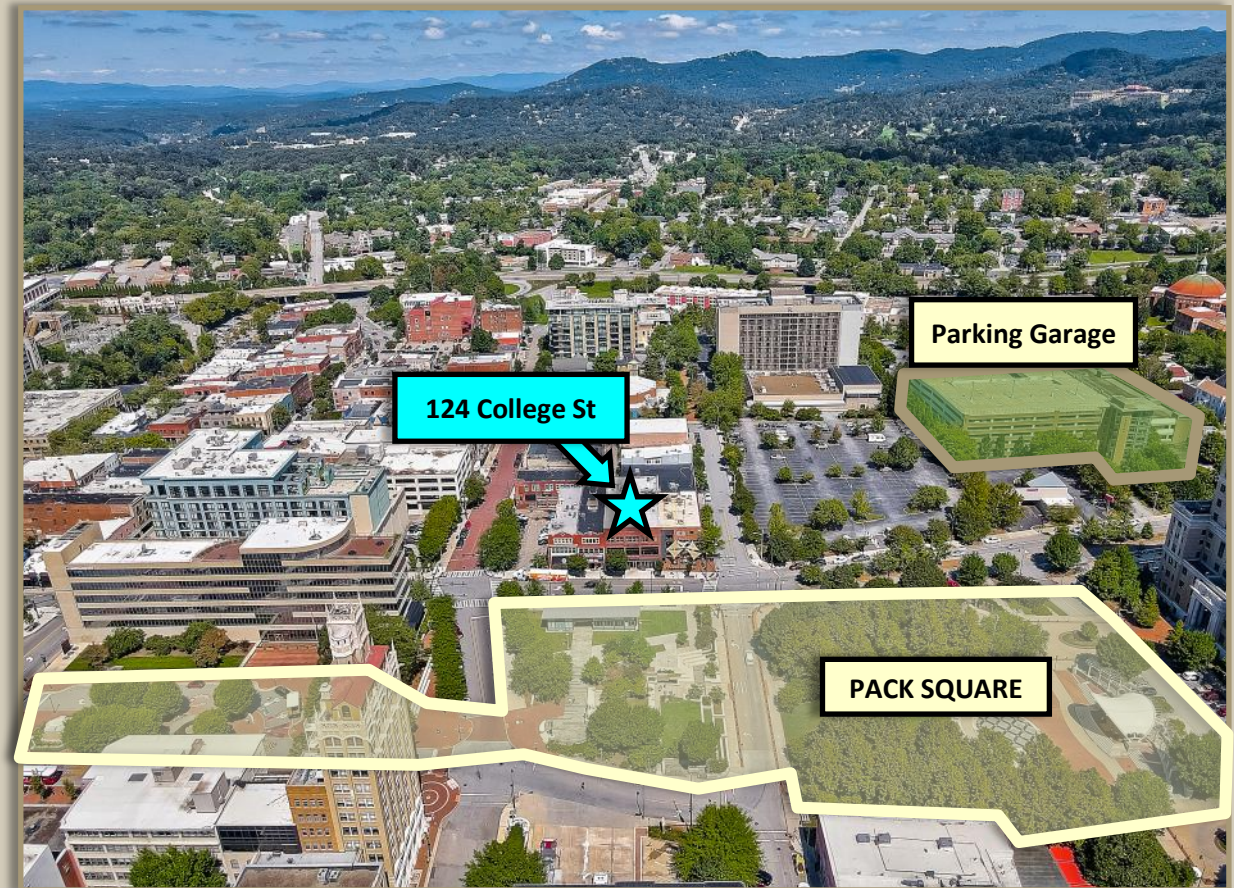
- Less than one hour: \$0.00 (free)
- Second hour: \$2.50
- Each additional hour: \$1.25
- Daily maximum: \$12.00



## Pack Square Park

Asheville's front yard: where the historic past meets the future. Named in 1900 after George Pack for his donation of land to be used as a public park, Pack Square Park underwent several transformations over the years. Sophisticated yet spontaneous, the park links the diverse culture of roaming troubadours, festivals, theatre, and family gatherings. The Art Deco City Hall and other historic buildings surround paying tribute to a colorful past. Native trees and plants grace the park, while Urban Trail markers guide visitors from one adventure to another. Pack Square is popular for festivals & events

and has been a central feature of Asheville since the town's creation in 1797. It is host to numerous festivals and free activities throughout the year such as Shindig on the Green, Art in the Park, LEAF Downtown and others. It is also home to SplashVille an interactive water feature, keeping it active day and night.











Exterior - College Street



Third Floor Entrance



Lobby



Lobby and third floor





Third Floor



Third Floor



Third Floor



Third floor





Third Floor



Third Floor



Third Floor



Third Floor





Third Floor - Kitchen / Breakroom



Third Floor



Third Floor



Third Floor





Third Floor - Bathrooms



Third Floor - Bathrooms



Third Floor- Hallway



Third Floor





Third Floor



Third Floor



Third Floor



Third Floor





Basement / Lower Level



Basement / Lower Level



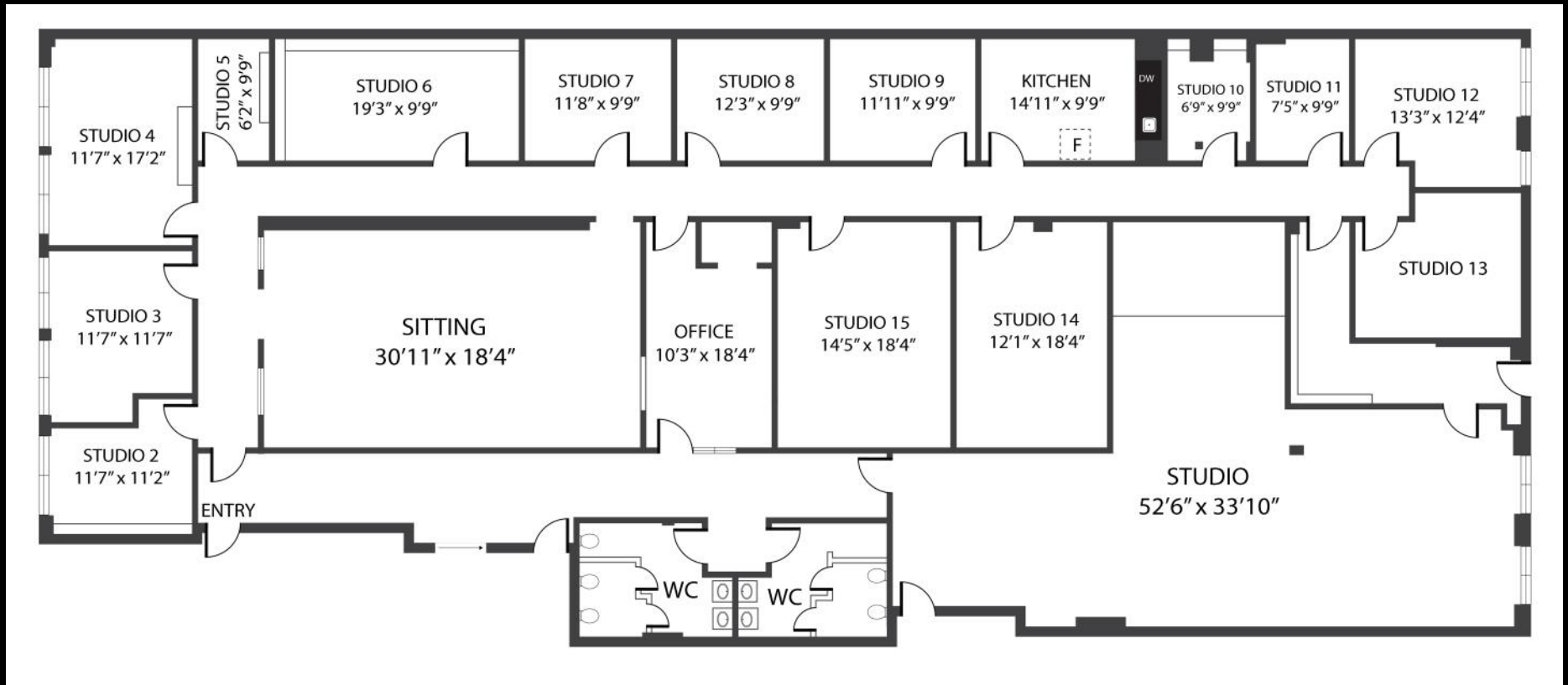
Basement / Lower Level



Basement / Lower Level

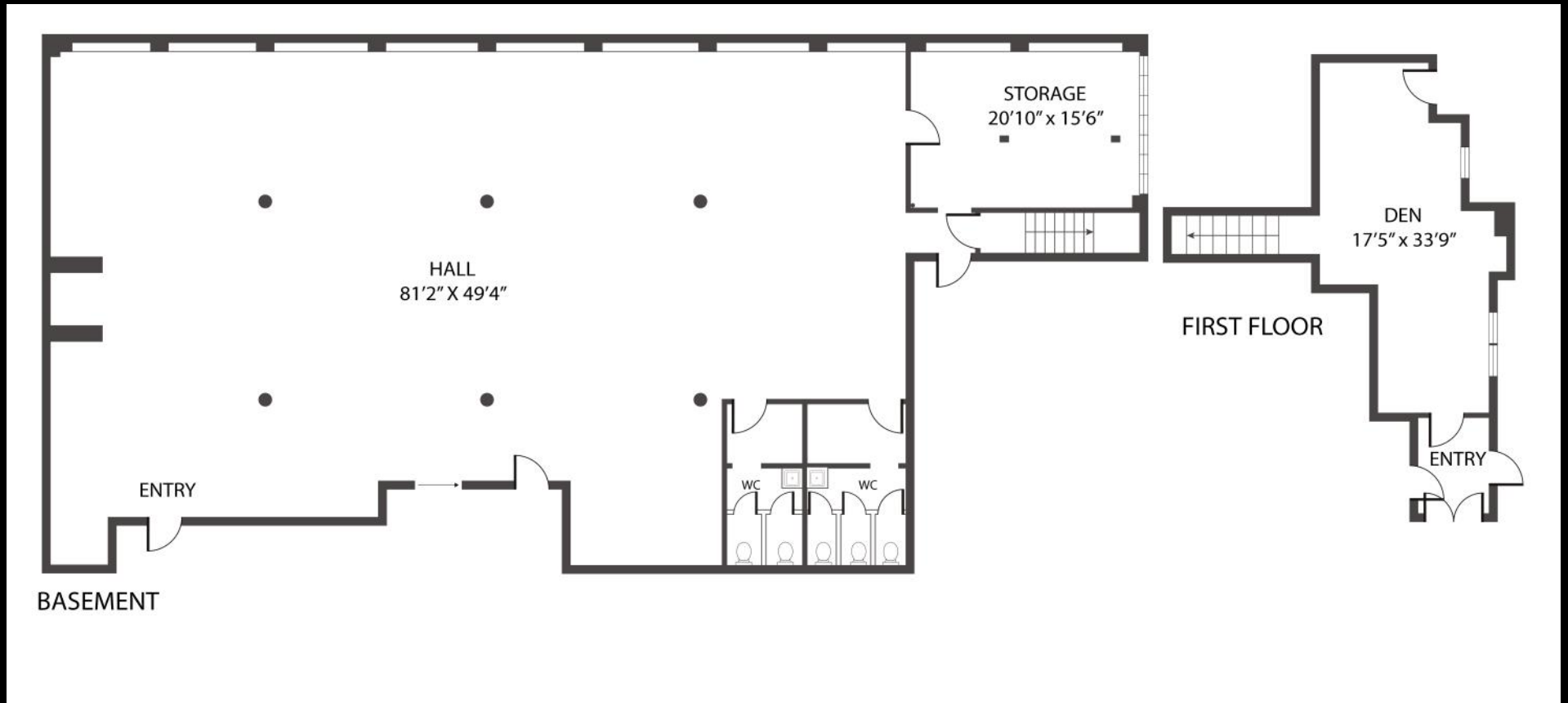


## Floor Plan - 3rd Floor



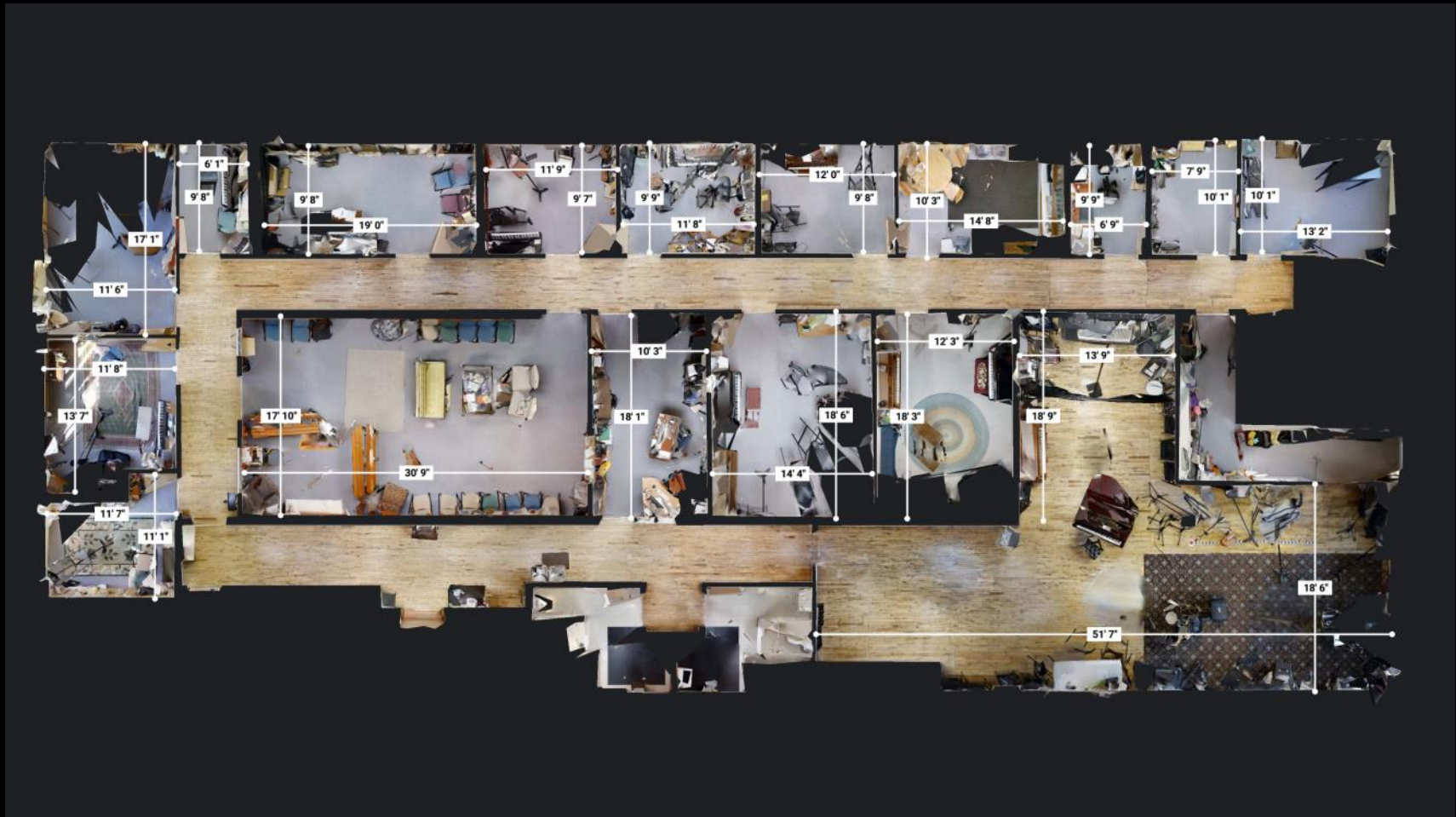


## Floor Plan - Basement





Click [HERE](#) for Matterport 3D



3rd Floor



Click [HERE](#) for Matterport 3D



Basement



