

# MURRAY HILL



7 Southgate Avenue | Annapolis, Maryland 21401

Dramatic views of Spa Creek from an uber-contemporary interior within a 1933 brick Tudor/ English Cottage. Total renovation on exterior and 4 level interior. Floating stairs, steel cable railings, industrial lighting, stunning kitchen. Phenomenal finishes abound. Thoughtful layout for modern living. Murray Hill GEM located on the water block of Southgate with one car garage.



## Georgie Berkinshaw

[GBerkinshaw.com](http://GBerkinshaw.com) | [GBerkinshaw@CBMove.com](mailto:GBerkinshaw@CBMove.com) | C: 443.994.4456

Coldwell Banker Residential Brokerage | 4 Church Circe | Annapolis, MD | O: 410.263.8686

Operated by a Subsidiary of NRT LLC

7 Southgate Avenue,  
Annapolis MD 21401

#### EXTERIOR & GROUNDS

- 1933 brick English cottage exterior with original wood plank arched door flanked by arched glass windows with leaded harlequin panels
- Historic “Eagle Hose No. 2” plaque is mounted in the brickwork above the doorway
- Painted black trim
- Slate walkway and pad
- Slate stairs off side of pad lead to brick driveway; bricks are laid in chevron pattern
- Concrete block planting bed surround
- Planting beds feature liriopse, azaleas; walkway is lined with boxwoods
- Slate roof
- Black metal lanterns with Edison- style candelabra bulbs
- Copper gutters and downspouts
- Brick retaining wall and decorative wrought iron fencing along property line
- Brick driveway with flat- roofed single car garage
- Concrete stairwell to lower level from back yard
- Brick stairway from driveway to back yard, decorative wrought iron gate leads into yard

#### INTERIOR MAIN LEVEL

- Ash wide plank wood flooring
- Ornate crown molding, chair rail, and trim throughout main level; two tone pale grey walls
- Ample light with many original leaded glass windows, some featuring harlequin panels
- Square recessed lighting throughout
- Floating, focal staircase with steel cable, black lacquered square stock railing
- Ebonized wood stair treads with white risers
- Supports of slate grey wood and lacquered black metal
- A trio of in floor outlets surround stairwell
- Antiqued glass starburst light fixture in foyer
- Brushed metal ellipse chandeliers in breakfast nook and dining room
- Original brick fireplace with poured concrete hearth
- Walk in coat closet with pantry- style shelving
- Glass paneled French doors lead to brick steps and back yard

#### KITCHEN

- Two brushed metal and concave glass pendant lights with Edison- style bulbs over island
- Marble Countertops
- Steel KitchenAid appliances- dishwasher, microwave, French door refrigerator featuring ice maker, water dispenser, bottom freezer drawer
- Six burner gas stove with griddle, side by side ovens, and convection feature

*All information is deemed reliable, but is not guaranteed.*

- Ornate Faber hood with metal banding
- Steel EdgeStar glass door wine refrigerator
- White cabinets with darkly edged recessed panels, dark metal pulls

#### POWDER ROOM

- Paneled barn door with black metal oversized handles with round finial detailing
- White subway tile with black ground and banded trim
- Black metal square stock sink base with marble sink surround, black brass fixture
- Two overhead sink pendant lights - black metal with sinuous glass and Edison- style bulbs
- White Kohler toilet with modernist chrome handle
- Overhead blackened steel rustic barn- style light fixture

#### UPPER LEVEL 1

- Two original windows at the top of the stairs overlooking Spa Creek
- Grey wash pickled wide plank flooring throughout
- Square recessed lighting

#### MASTER BEDROOM SUITE

- Panel doors with consistent hardware throughout
- Three bays of original windows across two walls
- Industrial- style ceiling fan with darkened metal core and supports, weathered wood blades
- Glass French doors lead to private terrace with steel cable rails and views of Spa Creek
- Two walk-in closets, one with built in 9 drawer dressing table

#### ENSUITE FEATURES

- Paneled pocket door
- Modernist double sink with glass shelving below, black and steel faucets
- Flanking pair of steel and black L- shaped lights with round glass globes
- Kohler toilet with modernist chrome handle
- Thermasol controlled steam shower with music option
- Black metal banded glass shower enclosure, with black fixtures - shower head, overhead raindrop, handled head, knobs
- Marble subway tile shower walls and ceiling, with hexagonal floor tiles

#### SECOND FLOOR

- Five original leaded glass windows, two feature harlequin panels
- Barn door
- Closet
- Chrome ceiling fixture with glass globe and Edison- style bulb

#### EN SUITE FEATURES:

- Two matching light fixtures (same as room)

*All information is deemed reliable, but is not guaranteed.*

- Tub with chrome fixtures, tiled walls and ceiling, built in shelves, frosted glass window panel, glass barn door enclosure
- Kohler toilet with modernist chrome handle
- Grey marble sink surround with chrome base, faucet, and knobs
- Grey and white hexagonal micro-tile floor

## UPPER LEVEL 2

- Black metal spiral staircase with black diamond board treads and ornate finial balusters
- Large room with sloped ceiling
- Slab door with black metal square stock pulls

## BATHROOM FEATURES:

- Slab door with square stock pulls
- Sloped ceiling, walls of white subway tile with black grout
- Grey marble sink surround with dark brown wood and hammered metal base reminiscent of a sewing table
- Kohler toilet with modernist chrome handle
- Glass door with black metal banding and square stock pull allow access to shower
- Black metal fixtures, black tile built in shelves
- Tile floor comprised of white hexagons with black grout, black and white Greek Key pattern banding
- Two small original windows flank shower surround

## LOWER LEVEL

- Focal staircase landing turns into open concept room
- Weathered wood effect chevron ceramic tile floor
- Nine matched blackened metal pendant lights with glass globes and Edison- style bulbs
- Paneled doors with black square stock handles throughout
- Closet
- Barn door system cleverly hides electric panels and meter
- Bay of four windows allows natural light to stream in
- Louvered door with black metal square stock pull allows access to storage area and HVAC system
- Laundry room with sink, gunmetal Samsung SmartHome front load washer and dryer suite
- Stairway to exterior with glass paneled door, black metal square stock handles

## FULL BATH FEATURES

- Large scale rectangular dark grey floor tiles with pale grey grout
- Kohler toilet with modernist chrome handle
- Grey- veined white Mable sink surround with chrome faucet and knobs
- Weathered wood effect map drawer style base with large drawer and wood slat shelf
- Large mirror
- Black metal and chrome four light fixture with glass globes and Edison- style bulbs above sink

*All information is deemed reliable, but is not guaranteed.*

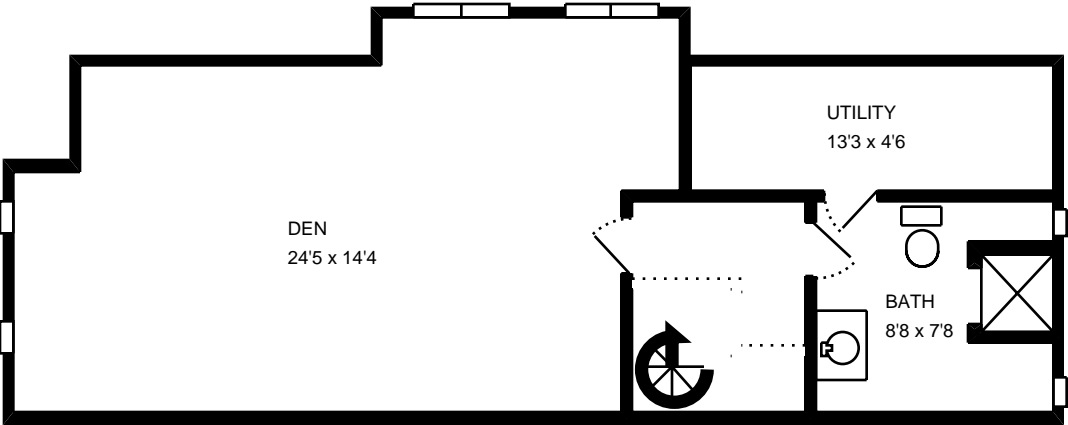
- Overhead black rustic barn- style light fixture with white interior
- Tub with chrome faucet and shower head
- Glass sliding door enclosure with black metal banding
- White subway tiles with black grout, black built in shelves

#### ADDITIONAL FEATURES

- Daikin digital thermostats on every level
- Legrand toggle light switches and dimmers throughout home
- Pre-wired for Verizon Fios
- HVAC zones (5), Basement, First Floor, Master BR, Secondary BR, Attic
- Square Footage provided by Builder's Drawings
  - 1<sup>st</sup> Floor – 1,237.8 Finished square feet
  - 2<sup>nd</sup> Floor – 1,011.4 Finished square feet
  - Attic – 482 Square feet
  - Lower Level - 1, 005.4
  - Total Finished Square Feet – 3,736.6

Property Address:  
7 Southgate Ave  
Annapolis, MD 21401

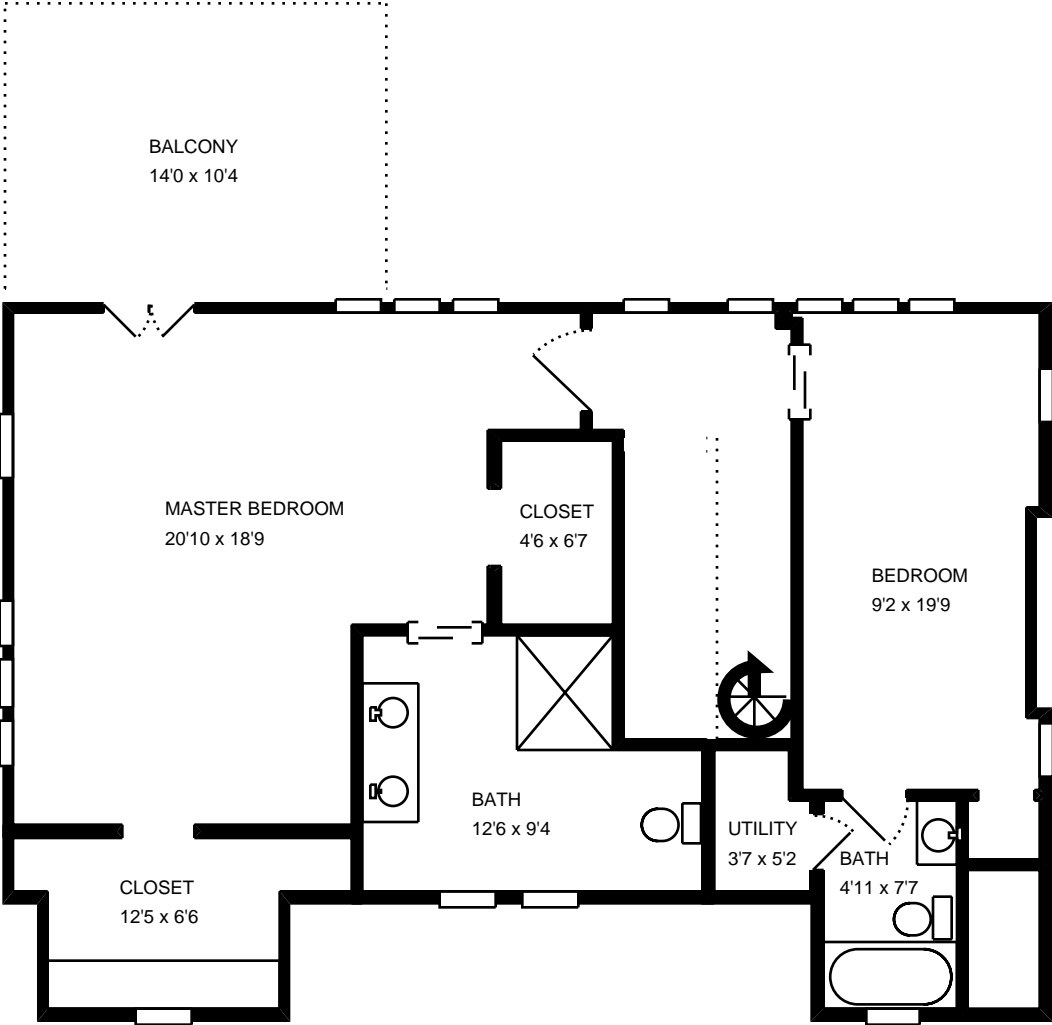
---



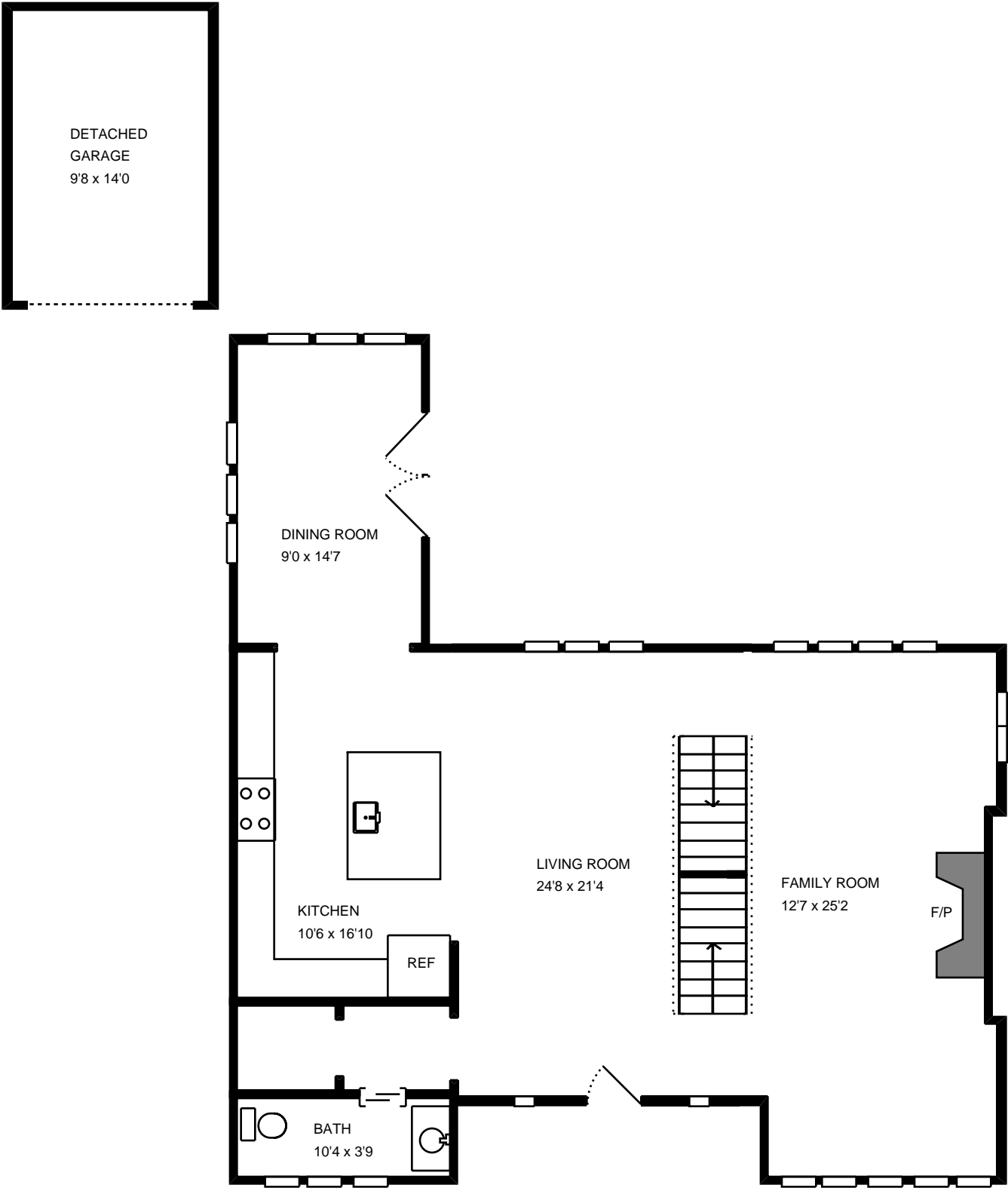
Property Address:  
7 Southgate Ave  
Annapolis, MD 21401

---

---



Property Address:  
7 Southgate Ave  
Annapolis, MD 21401



Property Address:  
7 Southgate Ave  
Annapolis, MD 21401

---

