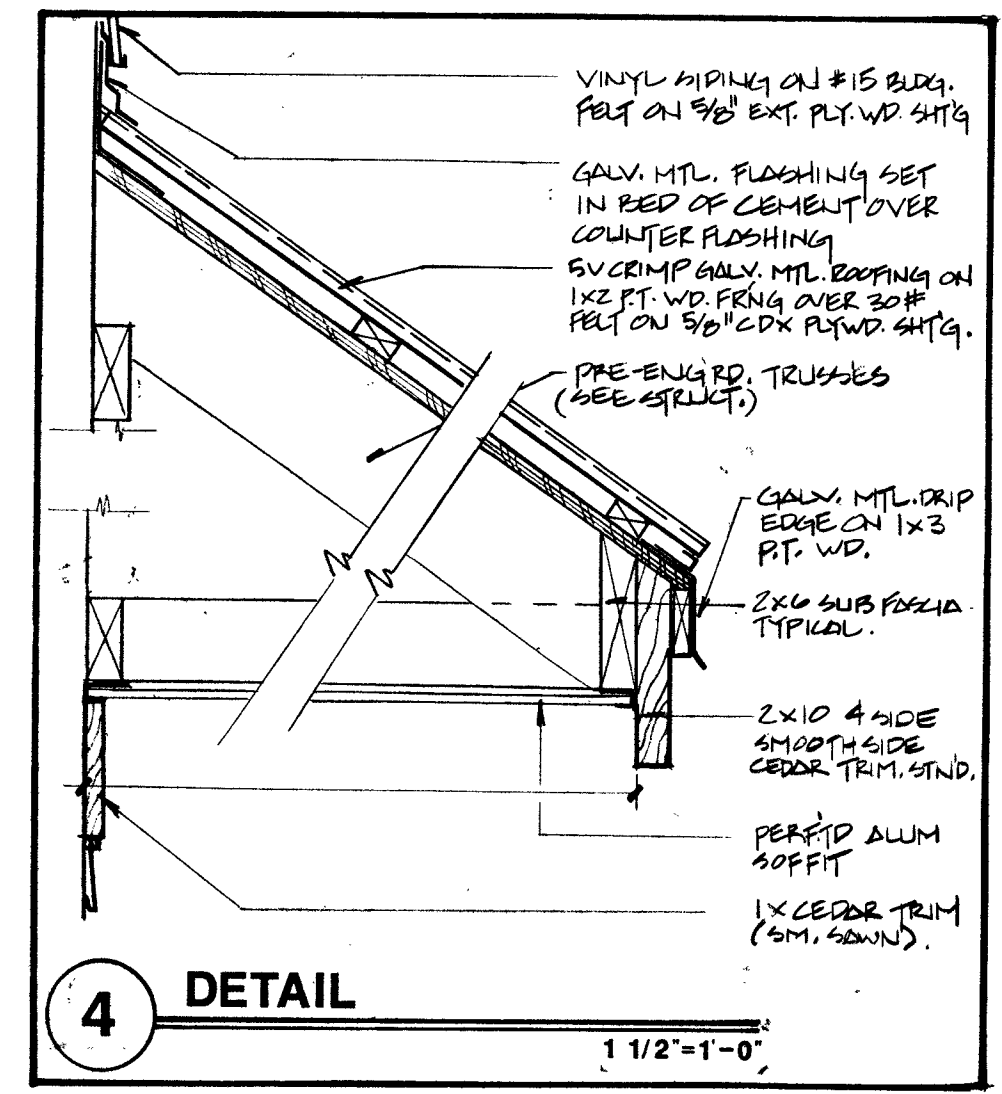
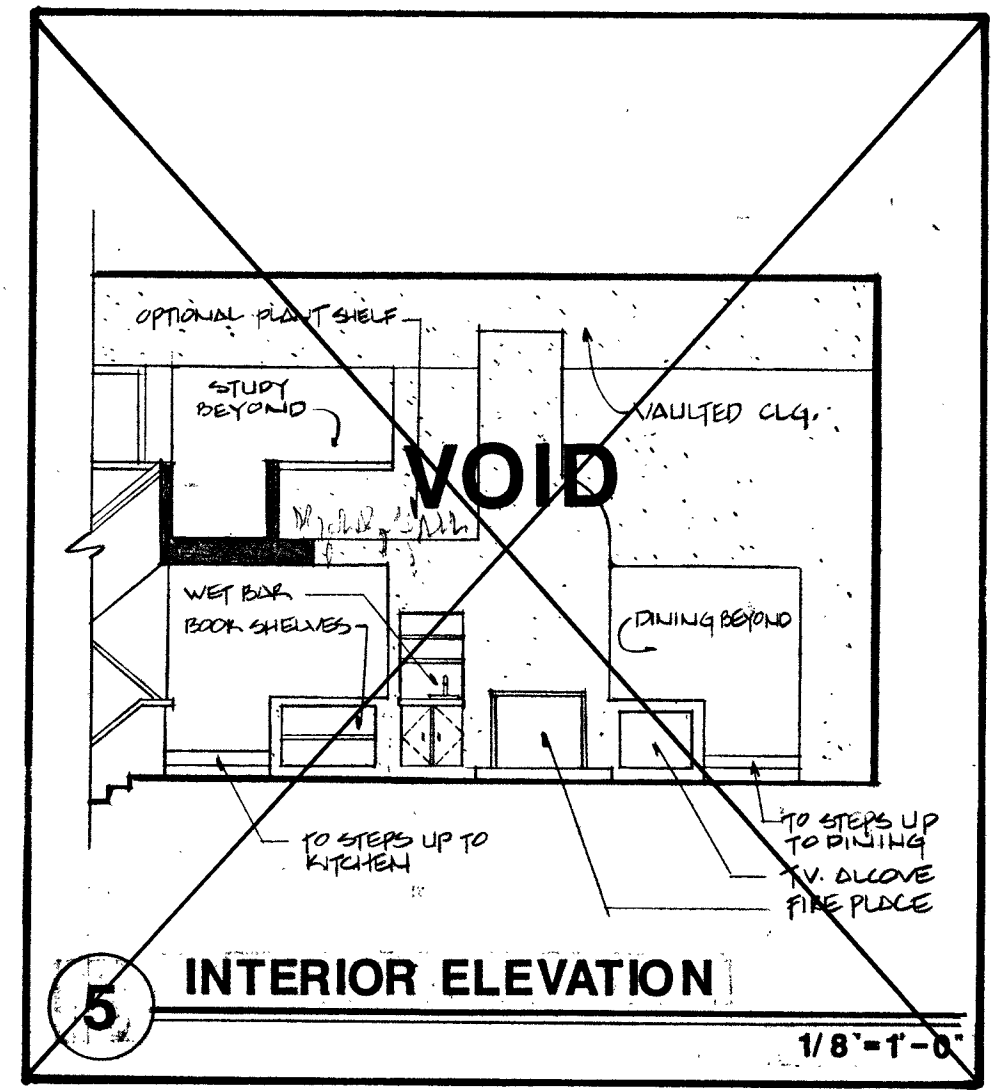


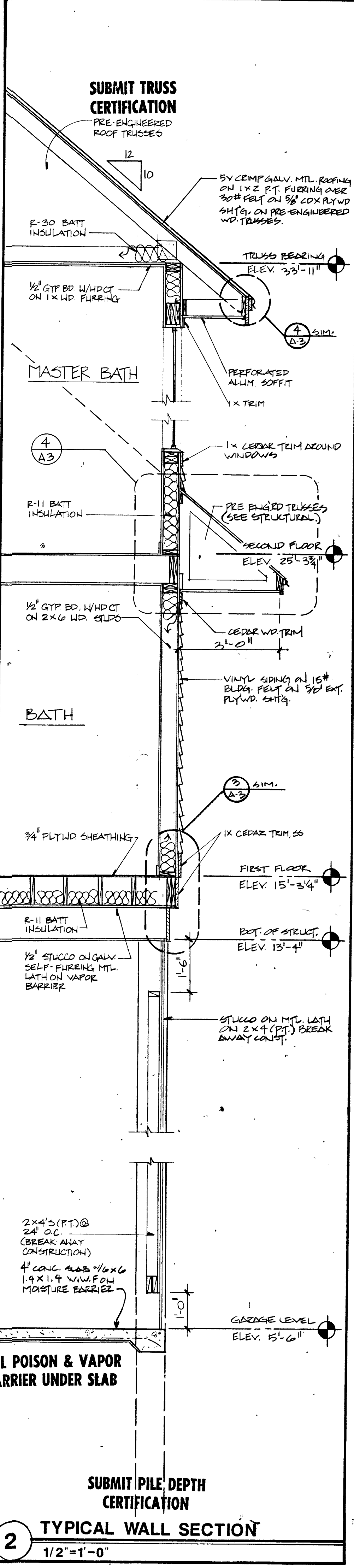
3 DETAIL
1 1/2" = 1'-0"



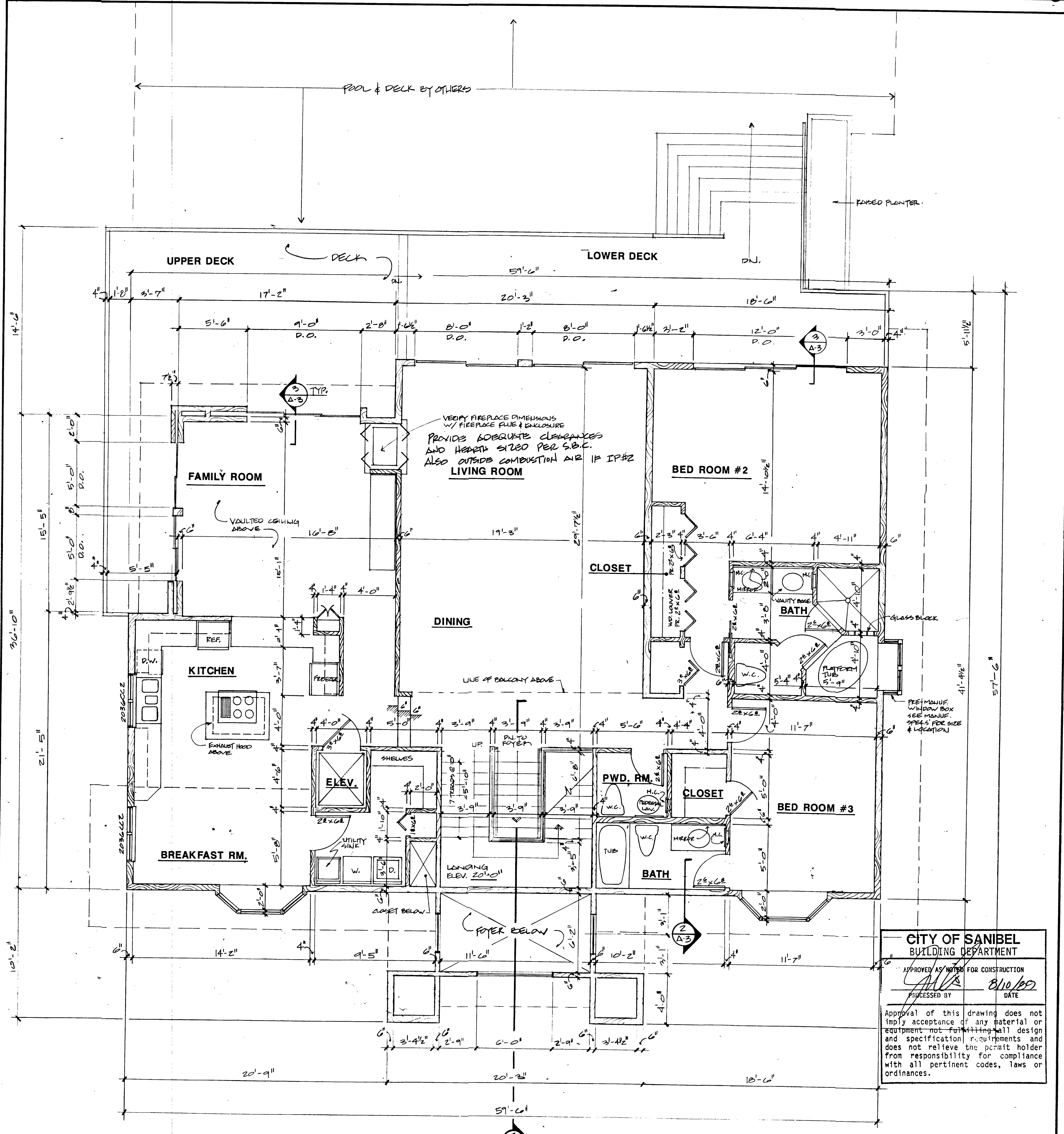
4 DETAIL
1 1/2" = 1'-0"



5 INTERIOR ELEVATION
1/8" = 1'-0"



2 TYPICAL WALL SECTION
1/2" = 1'-0"



1 FIRST FLOOR PLAN (REVERSED)
1/4" = 1'-0"

CITY OF SANIBEL
BUILDING DEPARTMENT
APPROVED AS NOTED FOR CONSTRUCTION
PROCESSED BY [Signature] DATE 8/10/89
Approval of this drawing does not imply acceptance of any material or equipment not fulfilling all design and specification requirements and does not relieve the permit holder from responsibility for compliance with all pertinent codes, laws or ordinances.

NOTE: ALL DIMENSIONS TO FACE OR OUTSIDE FACE OF STUD.

[Signature]
JUL 19 1989