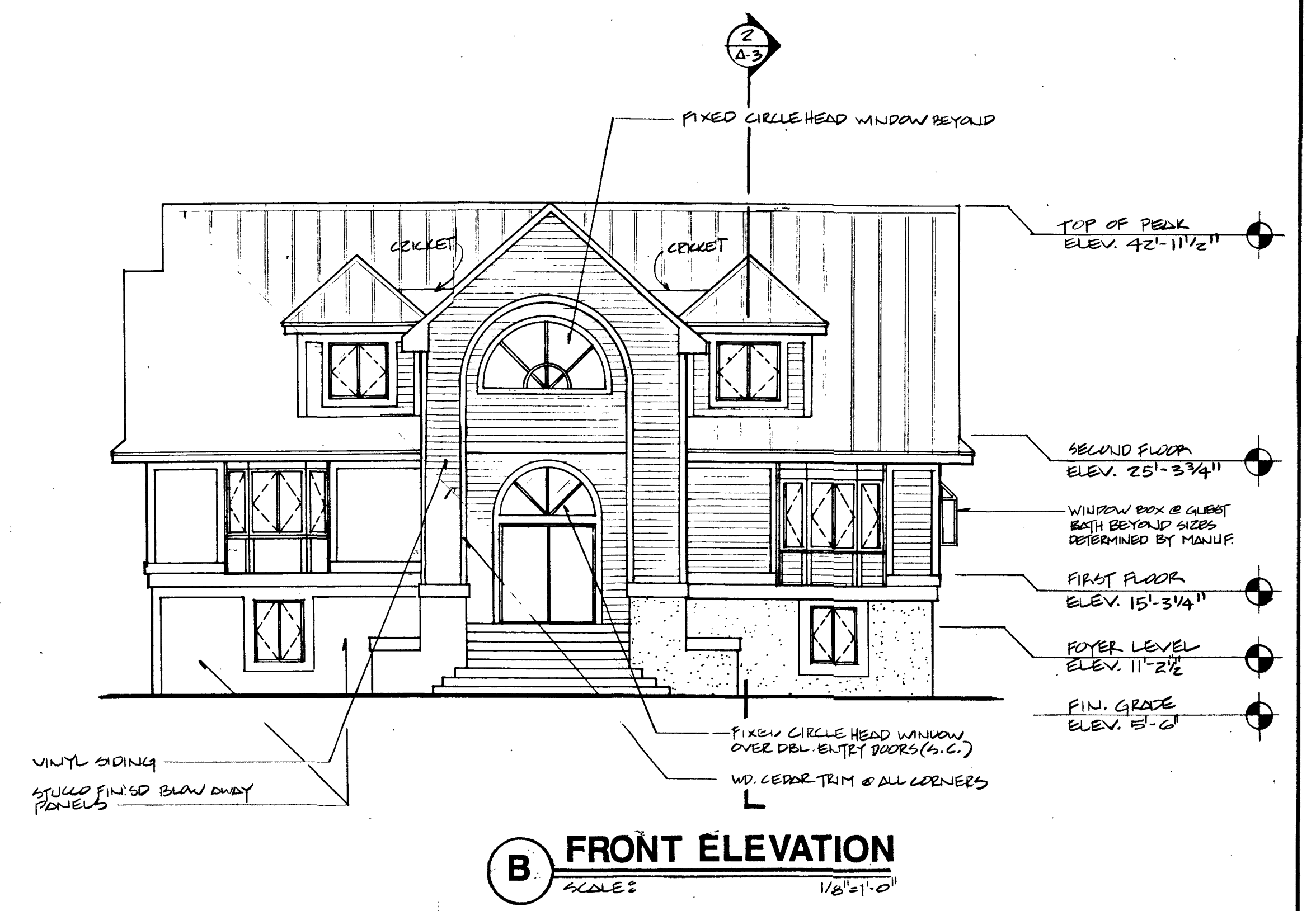
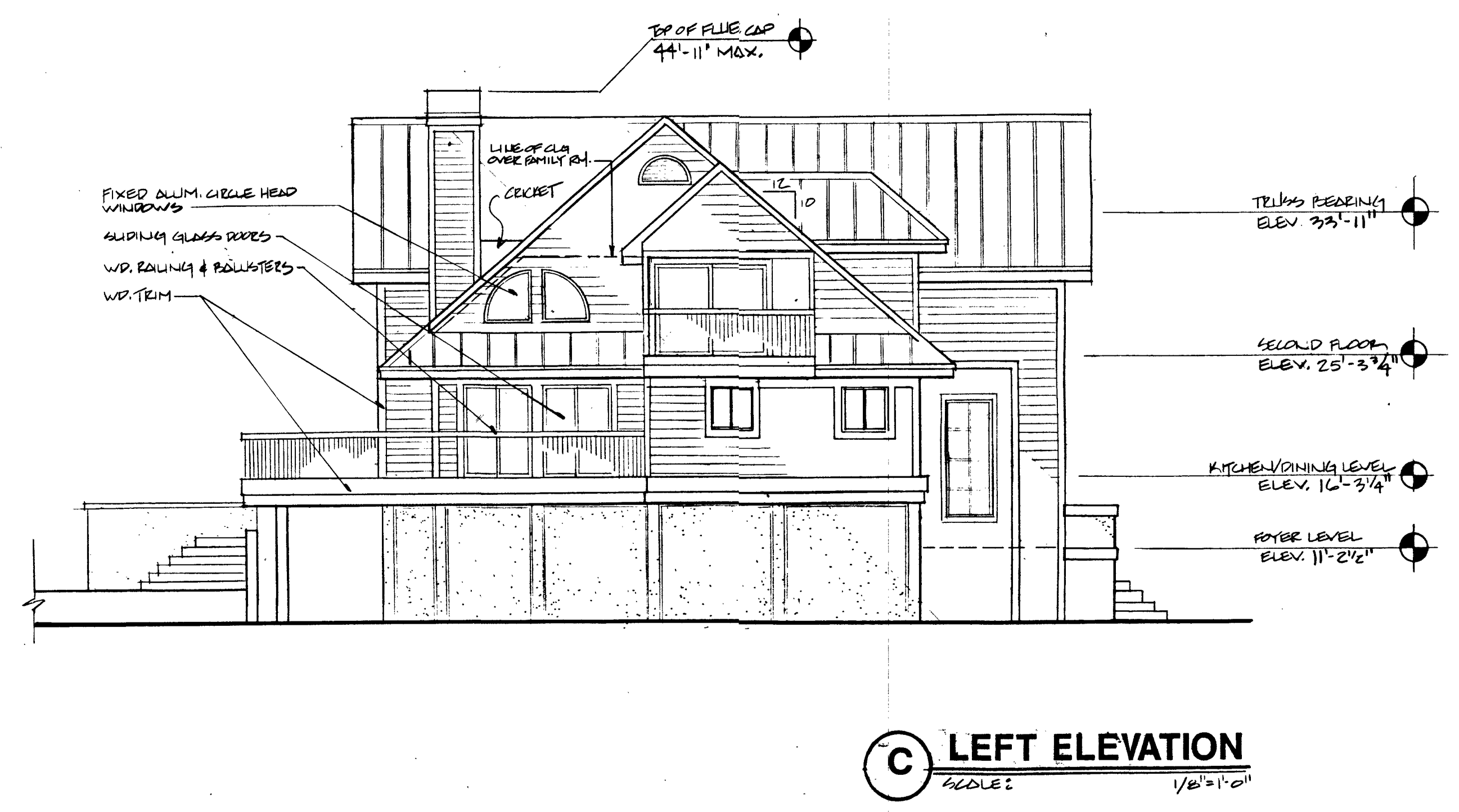


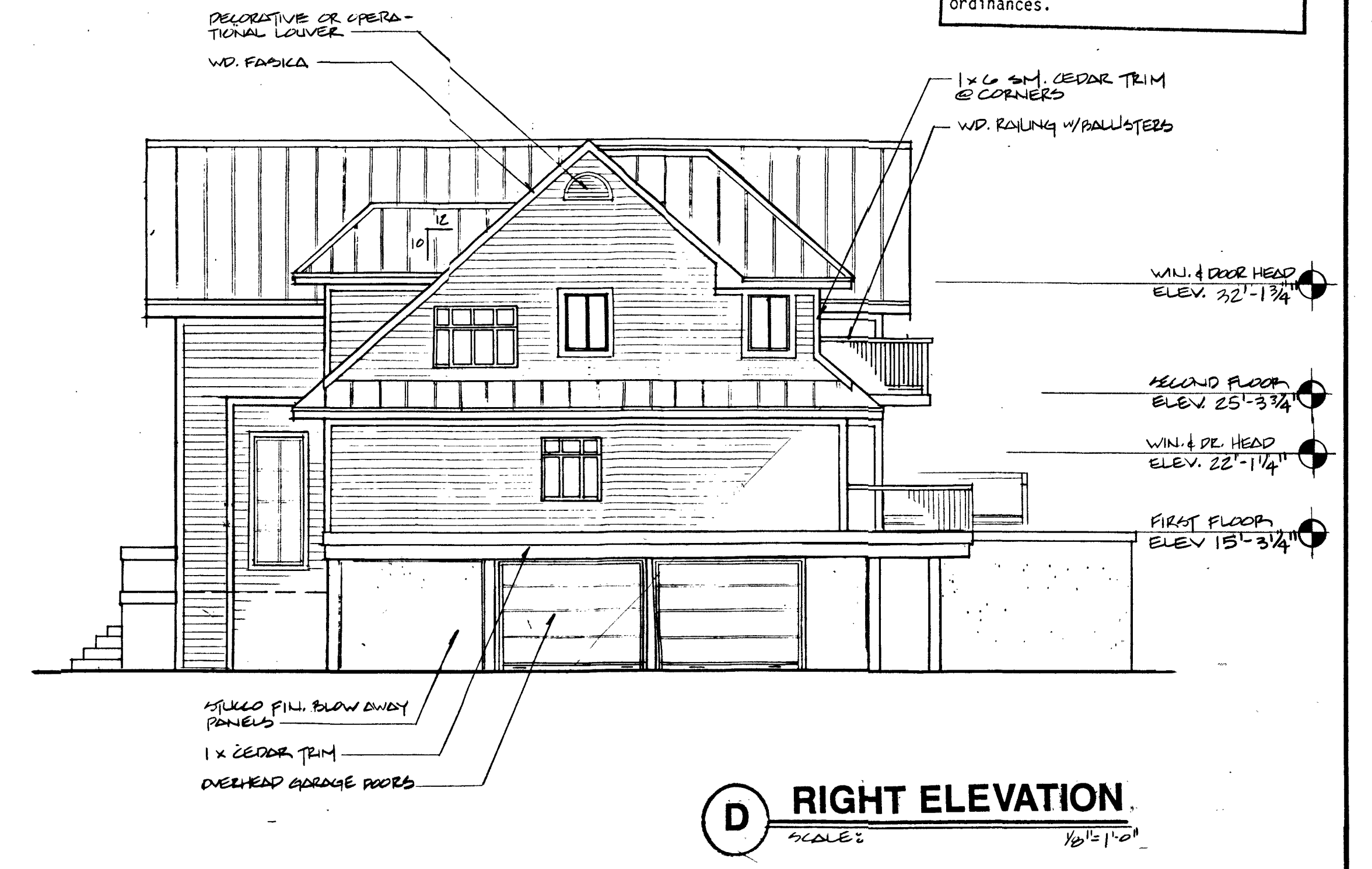
A REAR ELEVATION
SCALE: 1/8"=1'-0"



B FRONT ELEVATION
SCALE: 1/8"=1'-0"



C LEFT ELEVATION
SCALE: 1/8"=1'-0"



D RIGHT ELEVATION
SCALE: 1/8"=1'-0"

CITY OF SANIBEL BUILDING DEPARTMENT

APPROVED AS NOTED FOR CONSTRUCTION

PROCESSED BY: *[Signature]* DATE: 8-10-88

Approval of this drawing does not imply acceptance of any material or equipment not fulfilling all design and specification requirements and does not relieve the permit holder from responsibility for compliance with all pertinent codes, laws or ordinances.

[Signature]
JUL 19 1988