



COMMERCIAL

15 S. HANSON ST

Easton, Maryland



Rare multi use building in historic downtown Easton. Ground level luxury office space perfect for professional office. Second floor residential apartment. Off street parking. All just a few blocks from town center.

Offered at \$695,000

FEATURES: Electric heat, central a/c,
public water & sewer

ZONING: R7A

LEGAL: Liber 1390, folio 122

Information is believed to be accurate but should not be relied upon without verification.
Accuracy of lot size, square footage and other information is not guaranteed.



CHUCK MANGOLD, JR.

Associate Broker

410.924.8832 mobile

410.822.6665 office

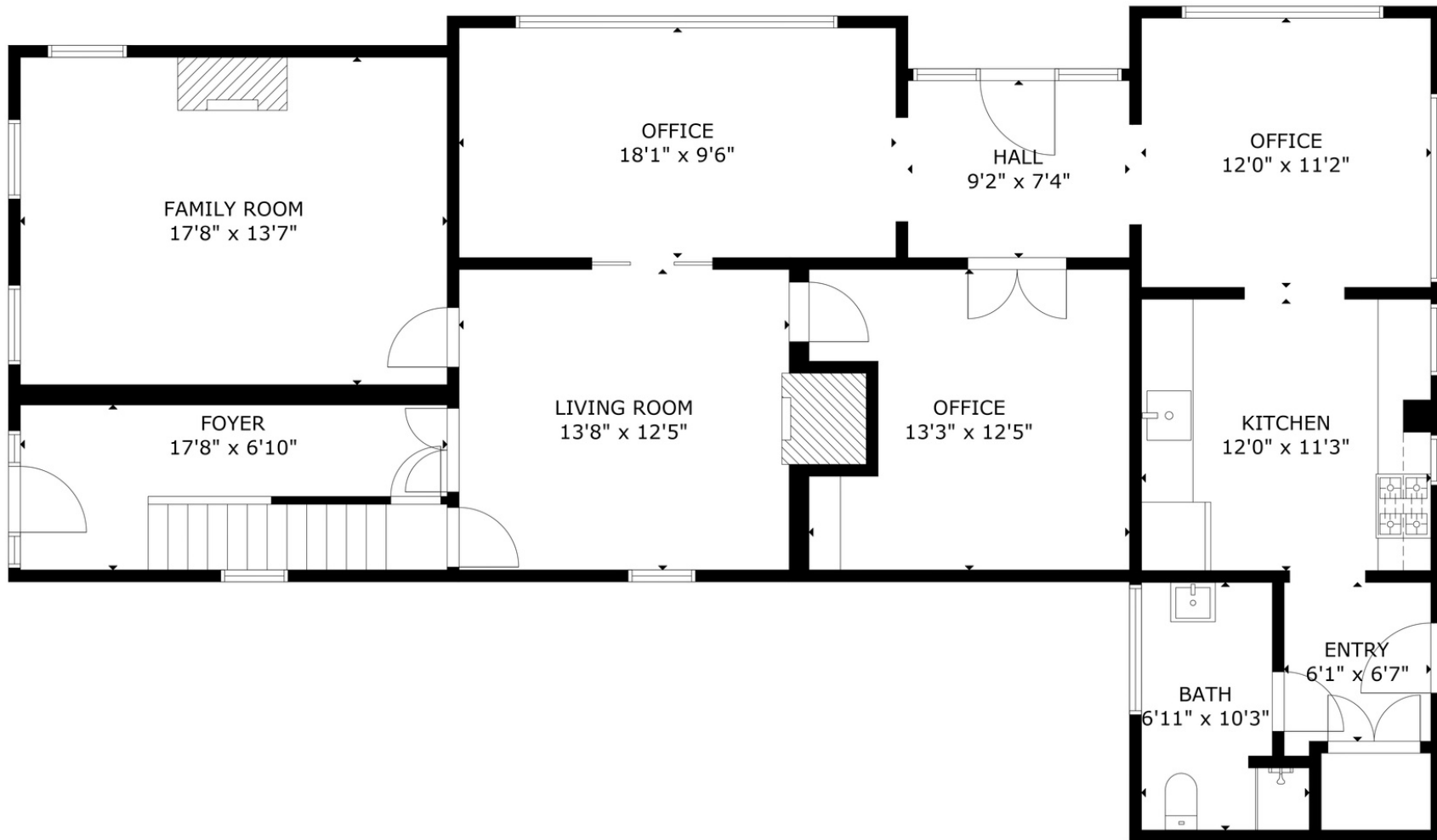
chuck@chuckmangold.com

chuckmangold.com

BENSON & MANGOLD
REALESTATE



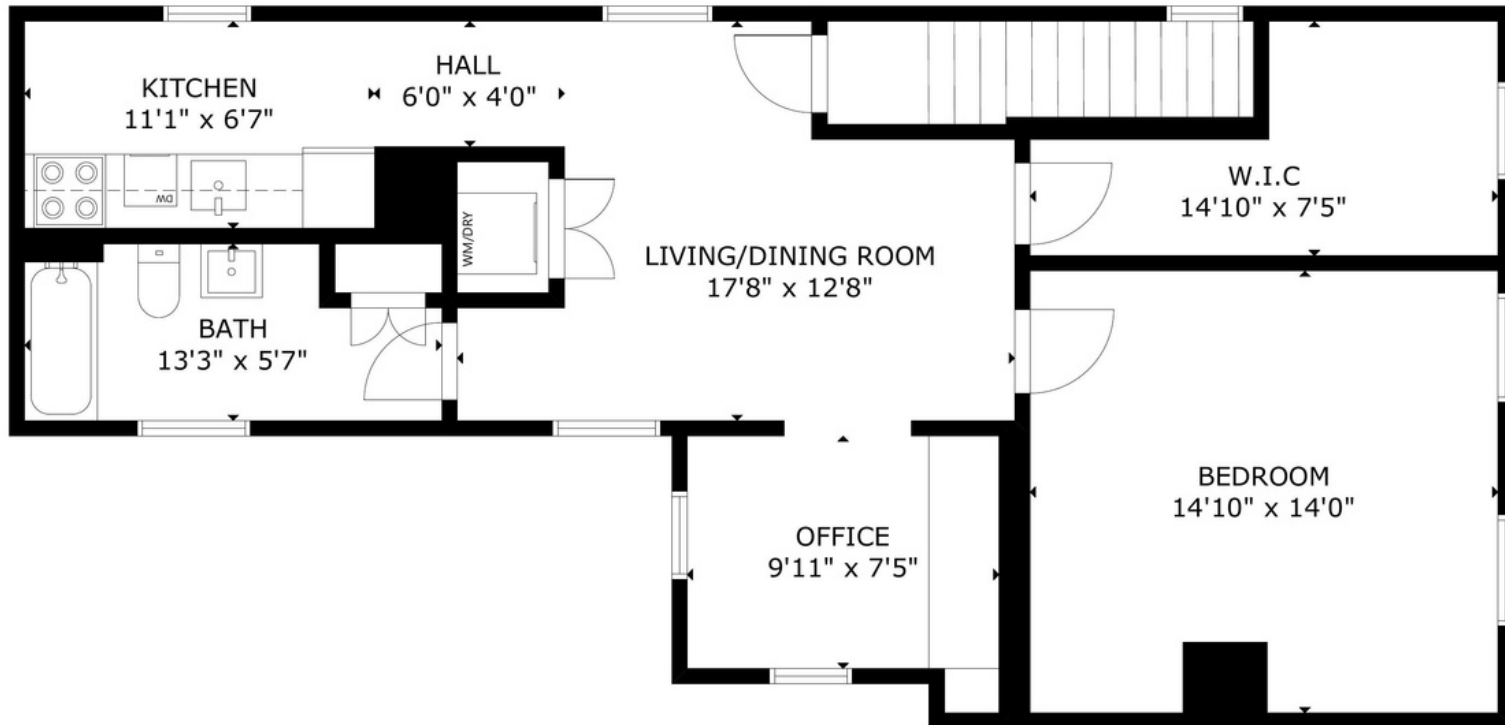
Floor Plan Downstairs



FLOOR 1

GROSS INTERNAL AREA
TOTAL: 1,397 sq ft
FLOOR 1: 1,397 sq ft
SIZE AND DIMENSIONS ARE APPROXIMATE, ACTUAL MAY VARY.

Floor Plan Upstairs



FLOOR 1

GROSS INTERNAL AREA
TOTAL: 820 sq ft
FLOOR 1: 820 sq ft
SIZE AND DIMENSIONS ARE APPROXIMATE, ACTUAL MAY VARY.