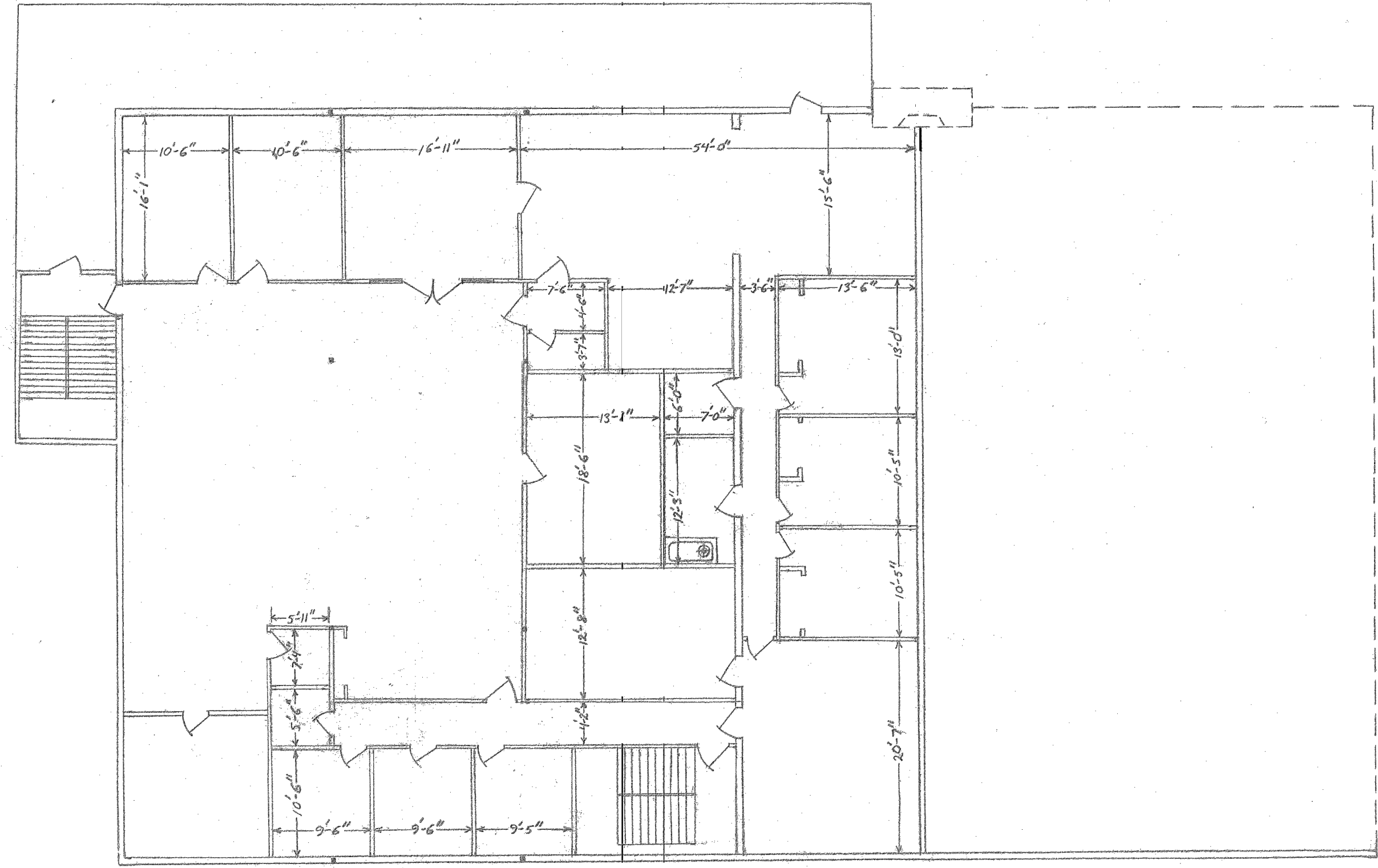
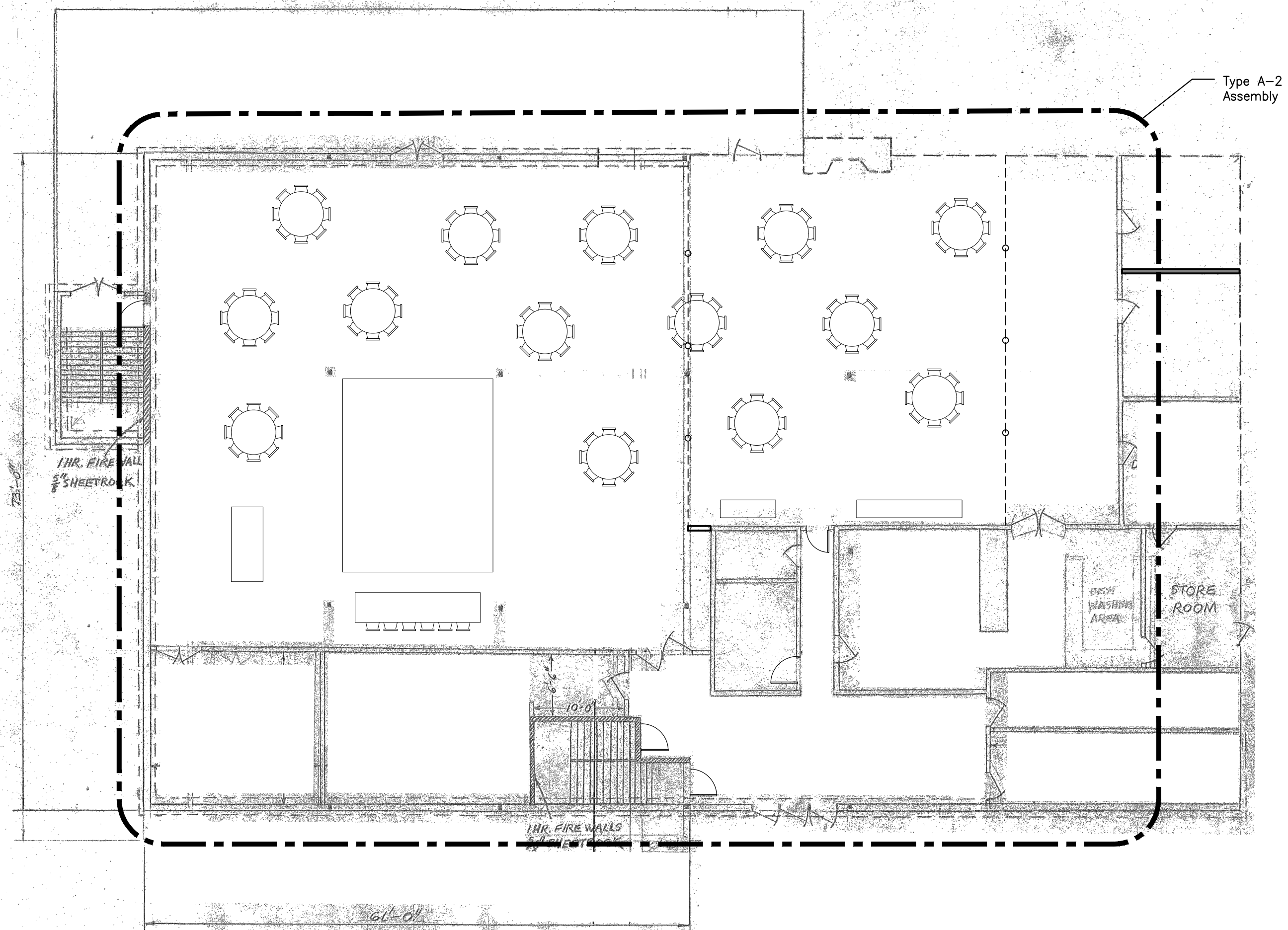


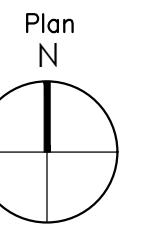
2 Third Floor Plan  
Scale: 3/32" = 1'-0"



2 Second Floor Plan  
Scale: 3/32" = 1'-0"



1 First Floor Plan  
Scale: 3/32" = 1'-0"



Consultants

Revisions

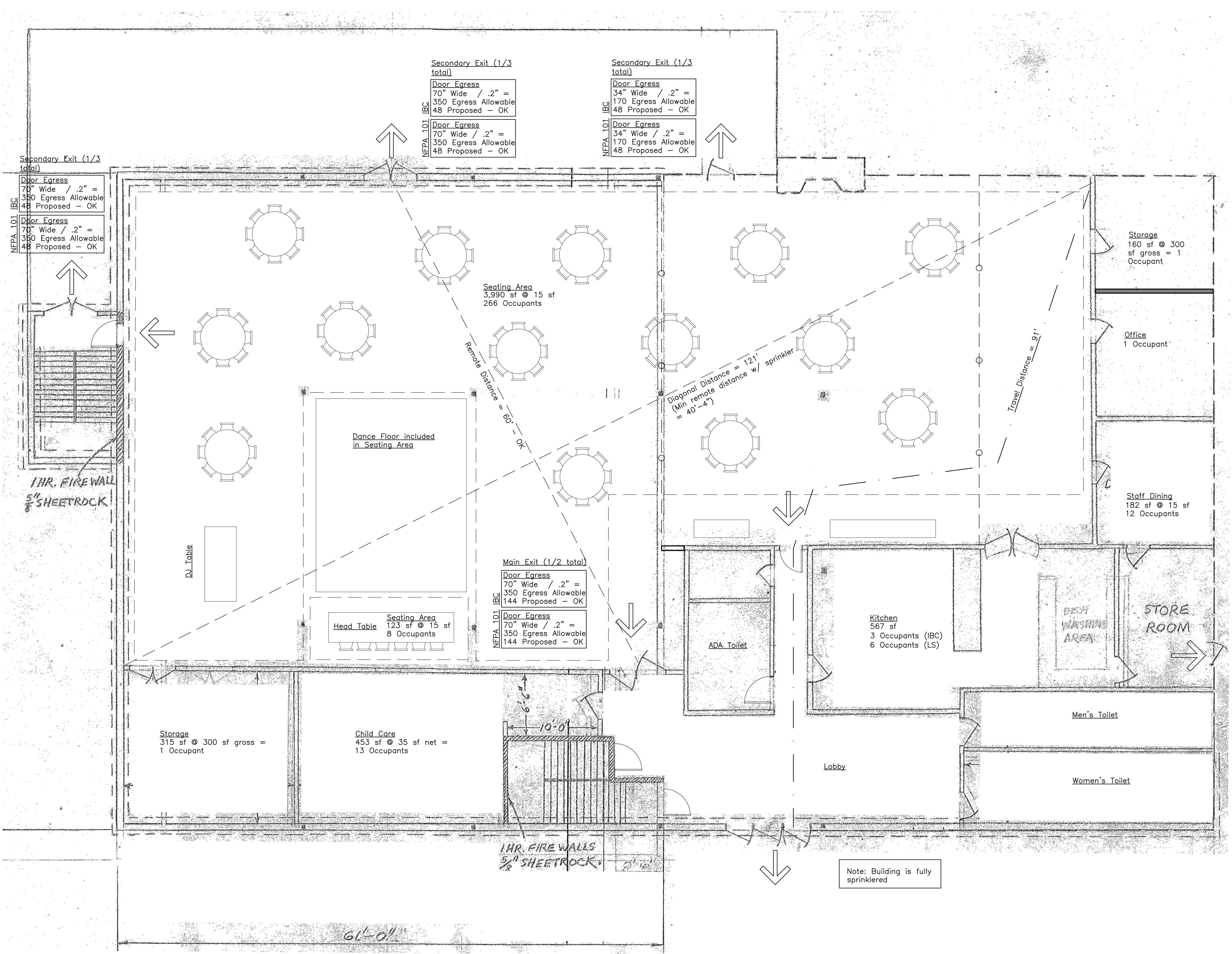
Sky-Hy  
Conference  
Center  
32 Sky-Hy Drive  
Topsham, Maine

Job Number: 21.0xx  
Date: 05.05.23  
Scale: 1/4" = 1'-0"

Drawing Title:  
Key Plan

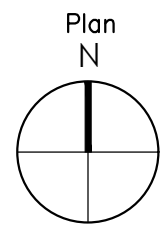
R.1  
Issued for  
Permit





OCCUPANT LOAD – IBC (Table 1004.1.2)		
First Floor		
Assembly space (Unconcentrated)	1,113 sf @ 15 sf net	274 Occupants
Staff Dining	182 sf @ 15 sf	12 Occupants
Office	1 Occupant	29 Occupants
Storage	2 Occupants	2 Occupants
Kitchen	567 sf @ 200 gross sf	2 Occupants
Child Care	453 sf @ 353 sf net	13 Occupants
Total Occupants		332 Occupants

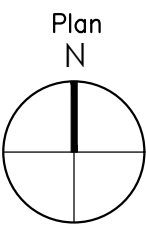
OCCUPANT LOAD – Life Safety (Table 7.3.1.2)		
First Floor		
Assembly space (Unconcentrated)	1,113 sf @ 15 sf net	274 Occupants
Staff Dining	182 sf @ 15 sf	12 Occupants
Office	1 Occupant	29 Occupants
Storage	2 Occupants	2 Occupants
Kitchen	567 sf @ 100 gross sf	6 Occupants
Child Care	453 sf @ 353 sf net	13 Occupants
Total Occupants		337 Occupants



Consultants

Revisions





Consultants

Revisions

Sky-Hy  
Conference  
Center

32 Sky-Hy Drive  
Topsham, Maine

Job Number: 21.0xx

Date: 05.05.23

Scale: 1/8" = 1'-0"

Drawing Title:

Electrical Life  
Safety Plan

R.3

Issued for  
Permit

SYMBOL LEGEND

- LED Exit Light (unswitched)
- LED Exit Light (unswitched) with emergency lighting unit with 2 heads and battery backup
- LED Exit Light w/ Directional Arrow (unswitched)
- Self Contained, wall-mounted, Emergency Lighting Unit with 2 Heads and battery
- Self Contained, ceiling-mounted, Emergency Lighting Unit with 2 Heads and battery backup
- Single Head Remote Emergency Light
- Fire Alarm Audio/Visual, mount 6'-8" AFF, dB Level in Field (Candela level)
- Fire Alarm Visual Strobe only, Flush mount 6'-8" AFF, (Candela level)
- System connected Smoke Detector, photoelectric type w/ Sounder base
- System connected Heat Detector
- Fire Alarm pull station, mount 48" AFF
- Fire Alarm Control Panel Station
- Knox Box (location and type to be approved by Topsham Fire Department)
- Fire extinguisher cabinet and type
- ETR Existing to Remain
- MHO Magnetic Hold Open (requires smoke detectors located on each side of door and connected to sprinkler system)
- WP Exterior grade / waterproof

NOTES

- Life safety equipment and locations shall conform to all applicable codes.
- Provide smoke detectors on both sides of doors with magnetic hold opens if specified.
- Provide pull station at each assembly door egress.
- Provide duct smoke detectors at each 2,000 CFM supply duct.
- Provide duct smoke detectors at each 15,000 CFM supply and exhaust duct.
- Electrical outlets shall be provided for all plug-in equipment. All other outlets shall be located per all applicable codes.
- Provide laminated floor plan at each public room indicating direction to building exit.

GENERAL NOTES - VISUAL NOTIFICATION

- Flash rate of strobe shall not exceed two flashes per second (2Hz) nor be less than one flash every second (1Hz) throughout the listed voltage range of the appliance.
- Maximum pulse duration shall be 0.2 seconds with a maximum duty cycle of 40%
- Wall mounted strobes shall be mounted such that the entire lens is not less than 80" and not greater than 96" above the finished floor or at mounting height specified using the performance-based alternative.
- If two groups of strobes are in the same room or visible, each group shall be synchronized, including if strobes are operated by separate systems.
- In square rooms w/ strobes not centered or in non-square rooms, the effective intensity from one strobe shall be determined by the max room size dimension by measuring the distance to the farthest wall or by doubling the distance to the farthest adjacent wall, whichever is greater.
- Strobes shall be located not more than 15' from the end of a corridor with a separation not greater than 100' and shall flash in synchronization. The effective intensity shall be rated not less than 15 cd.

GENERAL NOTES - AUDIBLE NOTIFICATION

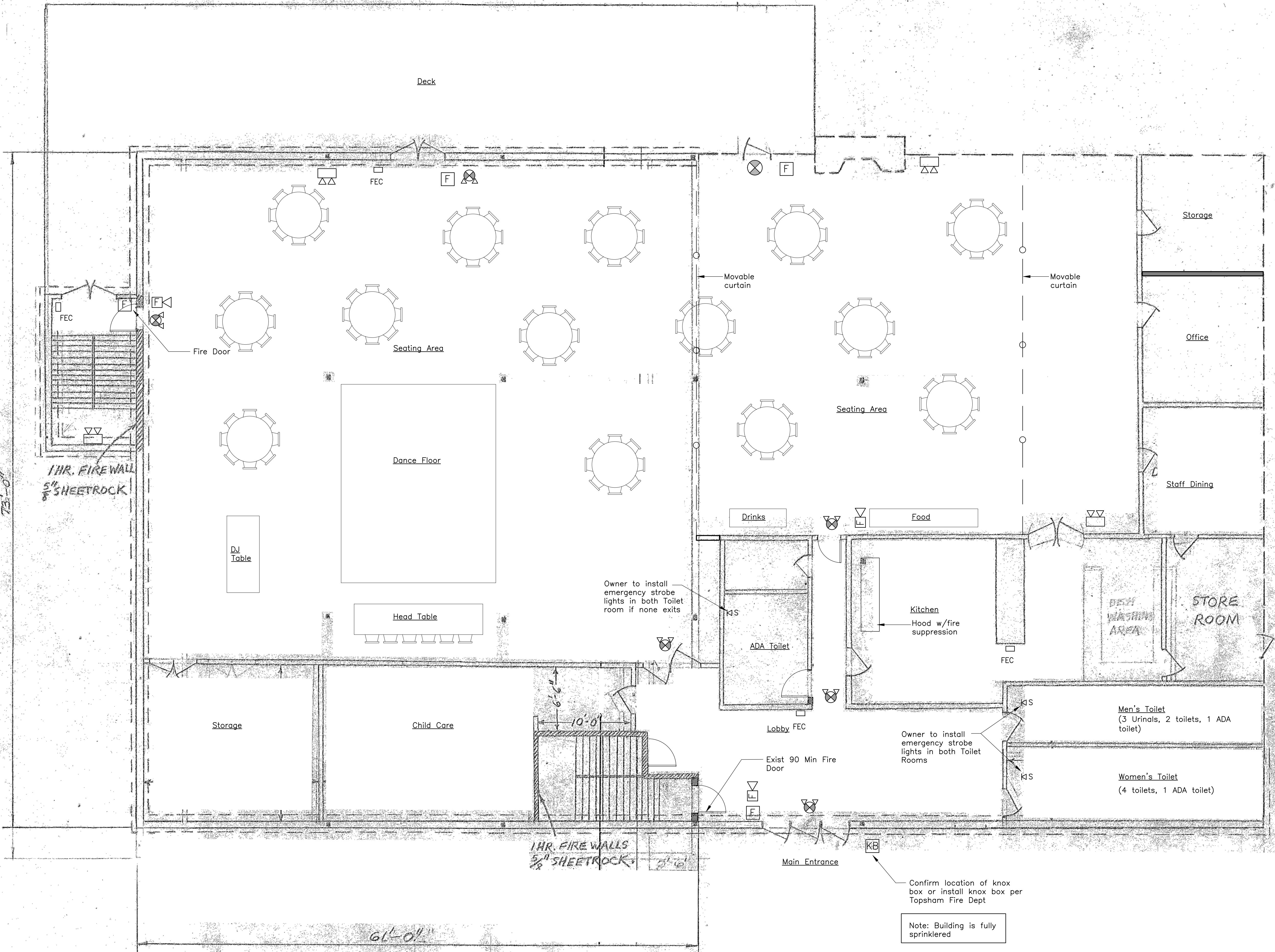
- Audible sound level of fire alarm horns shall be at least 15 dB above the average ambient sound level or 5 dB above the maximum sound level having a duration of at least 60 seconds.
- An average ambient sound level greater than 105 dBA shall require the use of visible notification.
- The total sound pressure level produced by combining the ambient sound pressure level with all audible notification appliances operating shall not exceed 110 dBA at the min hearing distance.

Fire Extinguisher Cabinet

FEC Fire extinguisher cabinet

Portable Fire Extinguishers:

- Location of fire extinguishers and cabinets shall conform to NFPA 10 Standards for Fire Extinguisher Cabinets.
- Portable fire extinguisher rating shall be 2-A, spacing shall not exceed a maximum of 75' and 3,000 st.
- Portable fire extinguisher rating in combustible cooking media exist shall be rated Class K, spacing shall not exceed a maximum travel distance of 30'



1

First Floor Plan

Scale: 1/8" = 1'-0"