

Condo BK-1, Pg. 282
 SHEET 1 of 5
 Pages 282-286

I, DALLAS G. MILLER DO HEREBY CERTIFY THAT THIS PLAT WAS DRAWN FROM AN ACTUAL FIELD SURVEY CONDUCTED UNDER MY DIRECT SUPERVISION AND REPRESENTS THE PROPERTY AS DESCRIBED IN DB 397, Pg. 140; THAT THE ERROR OF CLOSURE OF THE CONTROL SURVEY DOES NOT EXCEED 1/10,000 + AND THAT THIS PLAT WAS PREPARED IN ACCORDANCE WITH G.S. 23-30 AS AMENDED. WITNESS MY OFFICIAL HAND AND SEAL THIS 20 DAY OF APRIL 2008 A.D.

DALLAS G. MILLER, P.E.S., L-11445
 3170 SURVEY

PURSUANT TO THE PROVISIONS OF NCOS 47(C)-2-109, THE UNDERSIGNED CERTIFIES THAT THE PLAT AND PLANS OF FAIRWAY VILLAS AT MOUNT MITCHELL CONDOMINIUM CONTAIN THE INFORMATION REQUIRED BY THAT SECTION AND FULLY AND ACCURATELY DEPICT THE LAYOUT, LOCATION, DEPENDS AND FLOOR ELEVATIONS, UNIT NUMBERS AND DIMENSIONS OF THE UNITS AS BUILT.

George W. Reynolds
 GEORGE W. REYNOLDS, ARCHITECT

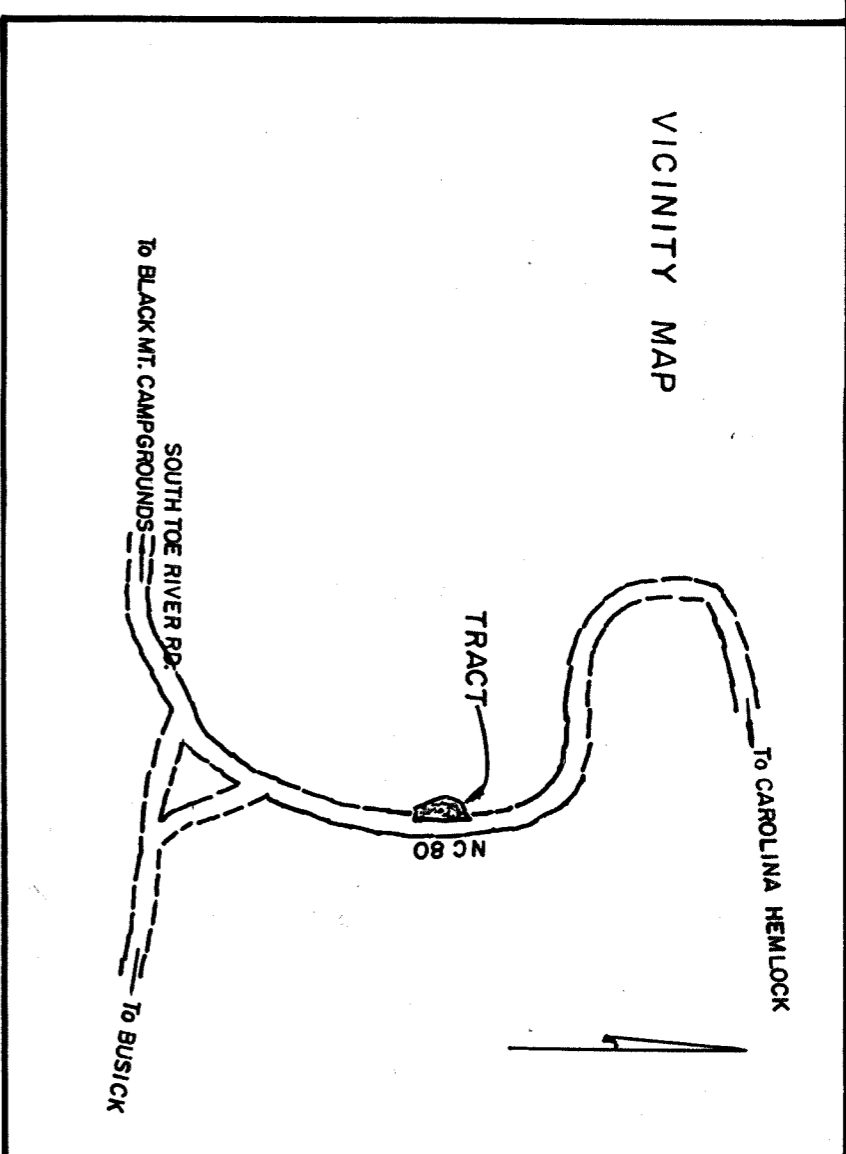
Also
 The Register of Deeds
 Co. 534 Registered on 4-21-08 at 1:21:53 PM
 STATE OF NORTH CAROLINA, COUNTY OF YANCEY
 FILED FOR REGISTRATION AT 1:21:00 CLOCK P.M. THIS THE 21 DAY
 OF APRIL, 2008, AND RECORDED IN PLAT BOOK C-11,
 PAGE 282, 283, 284, 285, 286
 REGISTER OF DEEDS

NC 80 IS A PUBLIC ROAD. ALL OTHER DRIVEWAYS AND PARKING AREAS ARE PRIVATE.
 REF PLAT BY HOFFMAN & BUTLER, ASHEVILLE, NC, DRAWING NO. 7624-01B, MARCH 1972, REVISED APRIL 21, 1986

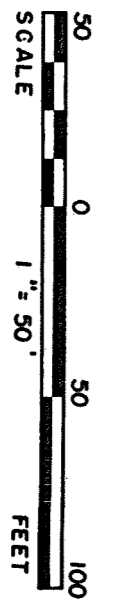
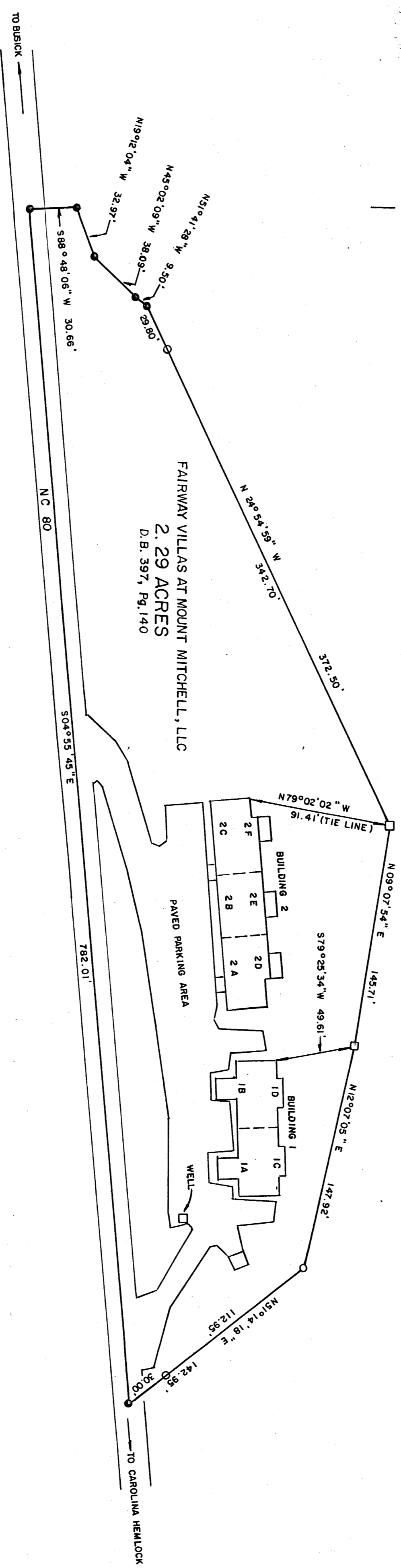
REVIEW OFFICER OF YANCEY COUNTY, CERTIFY THAT THE MAP OR PLAT TO WHICH THIS CERTIFICATION IS AFFIXED MEETS ALL STATUTORY REQUIREMENT FOR RECORDING.

REVIEW OFFICER _____ DATE _____

MT. MITCHELL LANDS, INC.
 D.B. 152, Pg. 437
 0755-03-02-2099



NOTE: BUILDING NO. 1, UNITS 1A & 1B AT GROUND LEVEL. UNITS 1B & 1C ARE 2nd FLOOR UNITS.
 BUILDING NO. 2, UNITS 2A, 2B & 2C ARE GROUND LEVEL, UNITS 2D, 2E & 2F ARE 2nd FLOOR UNITS.



- LEGEND
- SET IRON PIN
 - FOUND IRON PIN
 - OFF SET IRON
 - RAIL ROAD SPIKE SET
 - MONUMENT FOUND
 - UNMARKED POINT

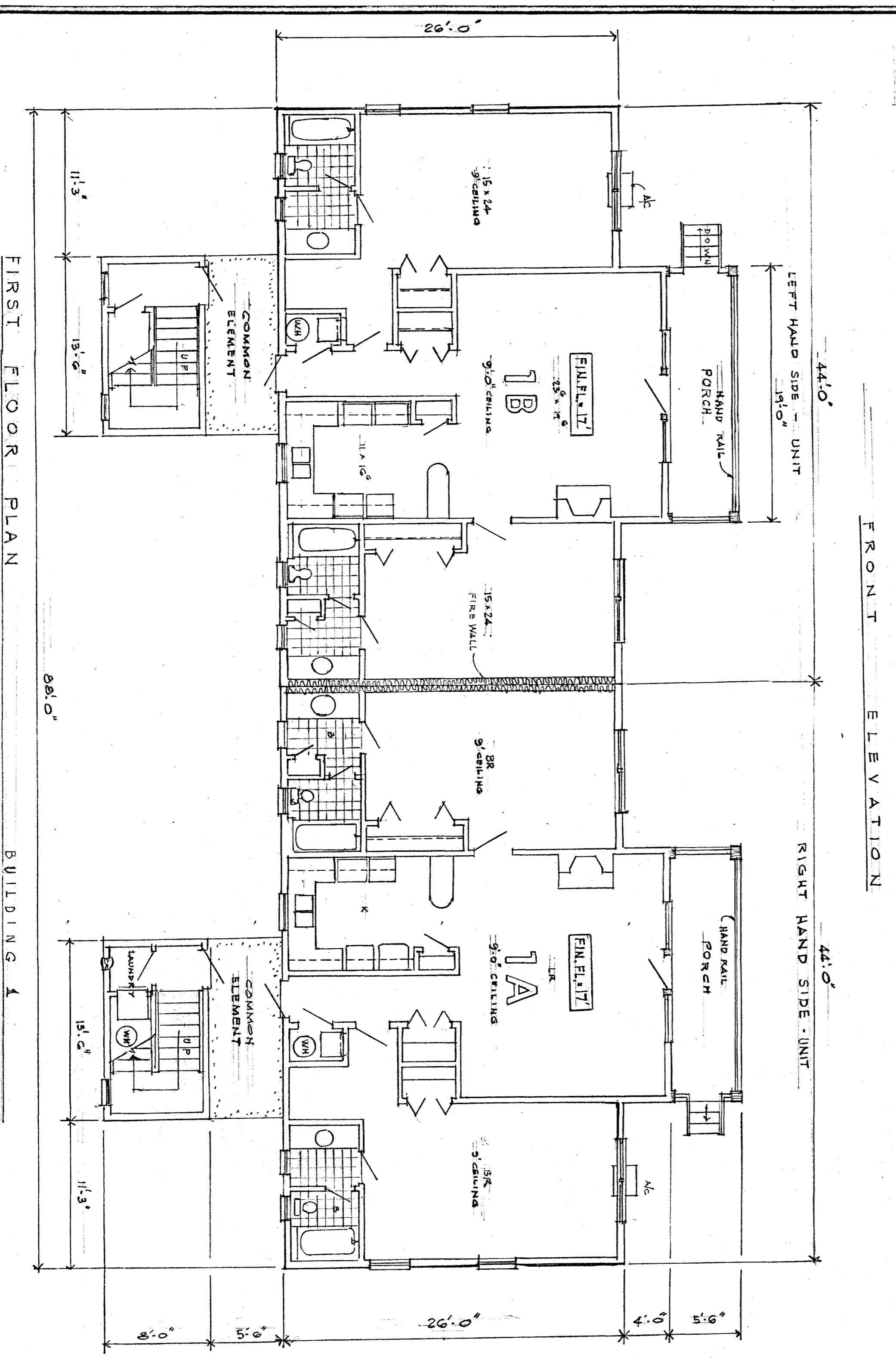
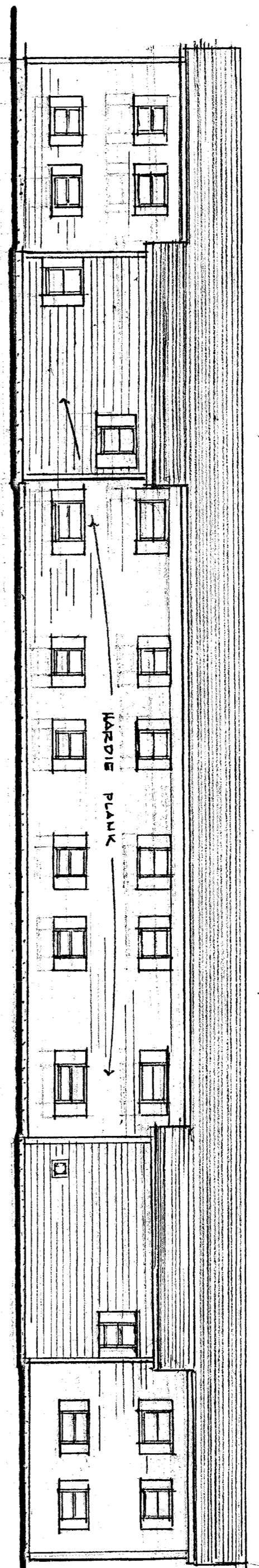
A SURVEY FOR
 FAIRWAY VILLAS AT MOUNT MITCHELL, CONDOMINIUM
 FAIRWAY VILLAS AT MOUNT MITCHELL, LLC
 SOUTH TOE TOWNSHIP, YANCEY COUNTY, NORTH CAROLINA

RIVER RUN AT MOUNT MITCHELL, LLC
 D.B. 522, Pg. 114
 0755-03-02-2099

DALLAS G. MILLER, P.L.S.-L-1445
 12 TOWN SQUARE P.O. BOX 518
 BURNSVILLE, NORTH CAROLINA 28714
 PHONE: 828 682-3916
 DRAWING NO. 0202-06-01D DATE: JANUARY 14, 2008

Condo Bk. 1, Pg. 283

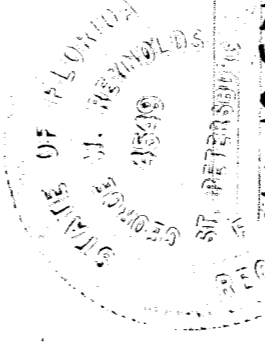
ESD FILE CORP. IRVINE, CA
SHEET 2 of 5
 Pages 282-286



FAIRWAY VILLAS AT MOUNT MITCHELL
 CONDOMINIUM

PURSUANT TO THE PROVISIONS OF NCGS. 47C-2.109, THE UNDERSIGNED CERTIFIES THAT THE PLAT AND PLANS OF FAIRWAY VILLAS AT MT. MITCHELL CONDOMINIUM CONTAIN THE INFORMATION REQUIRED BY THAT SECTION AND FULLY AND ACCURATELY DEPICT THE LAYOUT, LOCATION, CEILING AND FLOOR ELEVATIONS, UNIT NUMBERS, DIMENSIONS OF THE UNITS AS BUILT.

George W. Reynolds
 ARCHITECT
 FLORIDA LICENSE # 4549



STATE OF FLORIDA
 COUNTY OF PINELLAS
 JAMES E. MORTON
 A NOTARY PUBLIC FOR SAID STATE AND COUNTY DO HEREBY CERTIFY THAT GEORGE W. REYNOLDS PERSONALLY APPEARED BEFORE ME THIS DAY AND ACKNOWLEDGED THE DUE EXECUTION OF THE FOREGOING INSTRUMENT.
 THIS 16 DAY OF FEBRUARY, 2008
 MY COMMISSION EXPIRES - AUGUST 17, 2010

Notary Public
 [Signature]

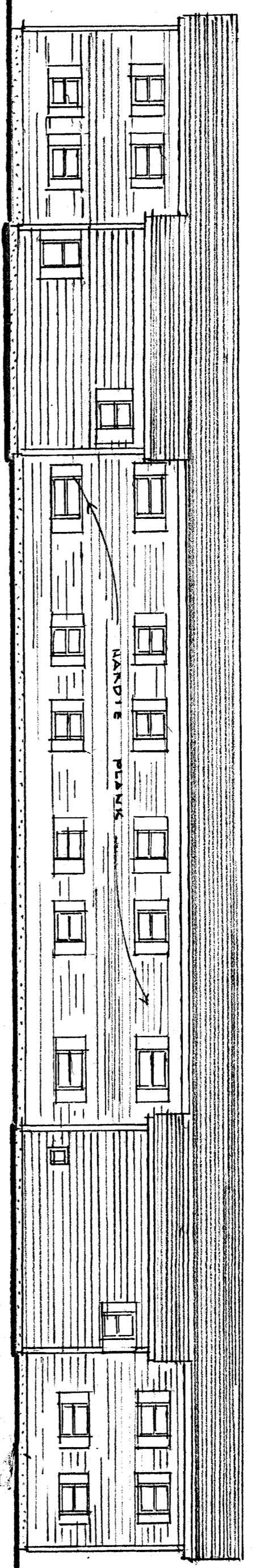
NUMBER	NET LIVING AREA	PORCH	COMMON ELEMENTS
17A	1,178 SQ. FT.	19' x 5'6"	182 SQ. FT.
17B	1,178 SQ. FT.	19' x 5'6"	182 SQ. FT.

21st day of April 2008
 George W. Reynolds
 Architect
 Also has Resolution of Condominium
 Recorded in Book 58Y Page 10
 On 4-21-08 at 1:21:52 PM

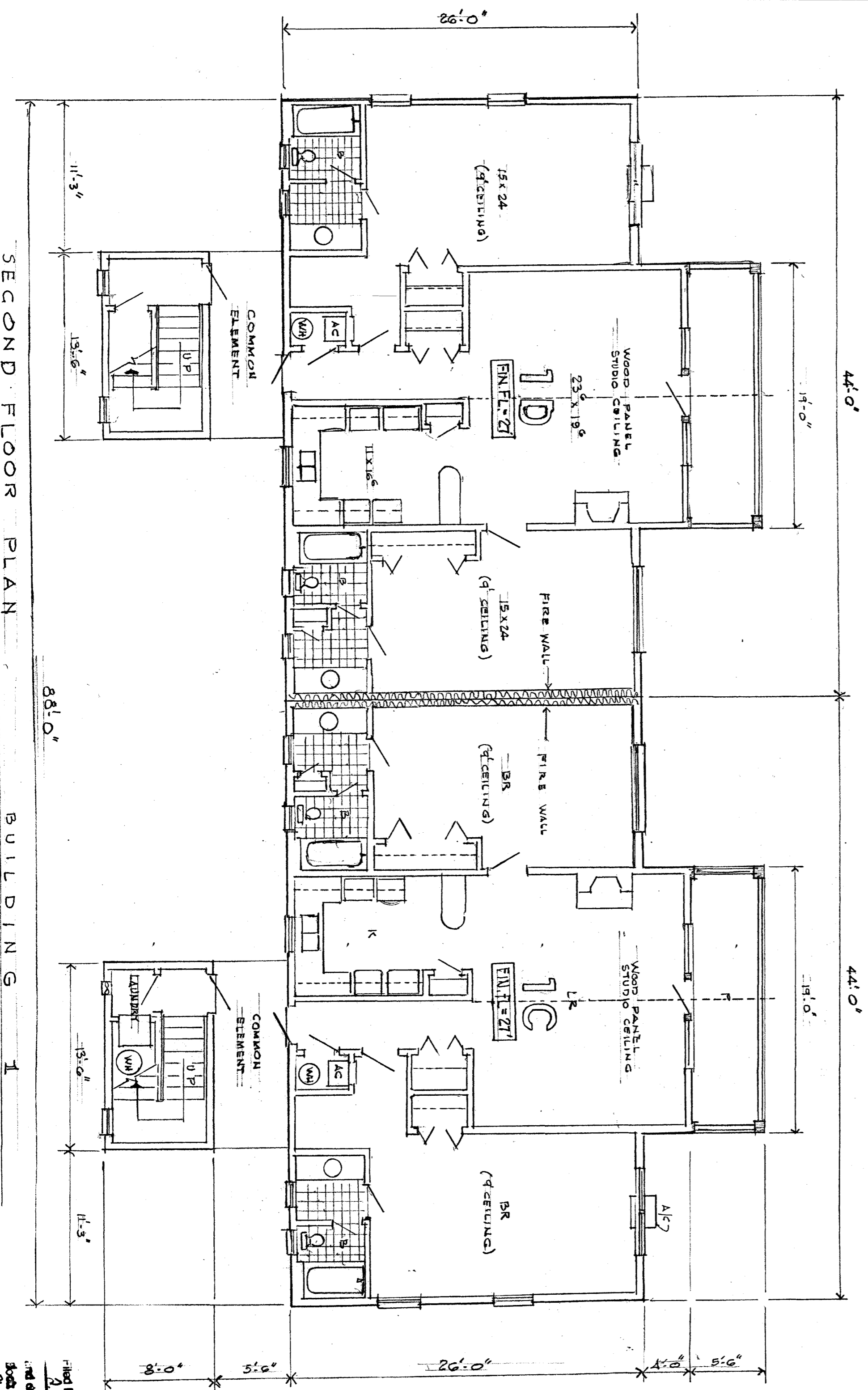
Fairway Villas at Mount Mitchell, LLC
 George W. Reynolds, Architect

Condo BK-1, Pg. 284

ESB FILE COMP. REVISED 04
SHEET 3 of 5
 Pages 282-286
 07/11



FRONT ELEVATION



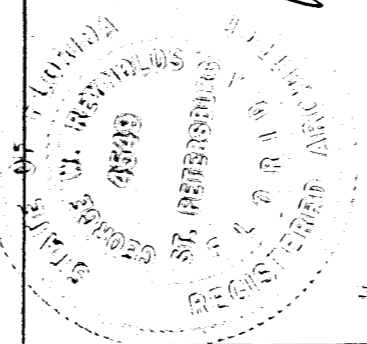
SECOND FLOOR PLAN

BUILDING

FAIRWAY VILLAS AT MOUNT MITCHELL
 CONDOMINIUM

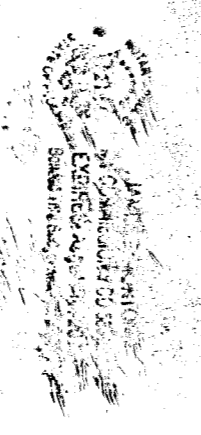
PURSUANT TO THE PROVISIONS OF
 NCGS 47C-2.109, THE UNDERSIGNED
 CERTIFIES THAT THE PLAT AND PLANS
 OF FAIRWAY VILLAS AT MT. MITCHELL
 CONDOMINIUM CONTAIN THE INFORMATION
 REQUIRED BY THAT SECTION AND FULLY
 AND ACCURATELY DEPICT THE LAYOUT,
 LOCATION, CEILING AND FLOOR ELEVATIONS,
 UNIT NUMBERS, DIMENSIONS OF THE UNITS
 AS BUILT.

GEORGE W. REYNOLDS, ARCHITECT
 FLORIDA LICENSE 4549



STATE OF FLORIDA
 COUNTY OF PINELLAS
 JAMES E. MORTON
 A NOTARY PUBLIC FOR SAID STATE AND
 COUNTY, DO HEREBY CERTIFY THAT
 GEORGE W. REYNOLDS PERSONALLY
 APPEARED BEFORE ME THIS DAY AND
 ACKNOWLEDGED THE DUE EXECUTION OF
 THE FOREGOING INSTRUMENT.
 THIS 6 DAY OF February, 2008.
 MY COMMISSION EXPIRES: AUGUST 17, 2010

Notary Public
James E. Morton



NUMBER	NET LIVABLE AREA	PORCH	COMMON ELEMENTS
1-C	1,178 SQ. FT.	182 S.F.T.	104.5 SQ. FT.
1-D	1,178 SQ. FT.	182 S.F.T.	104.5 SQ. FT.

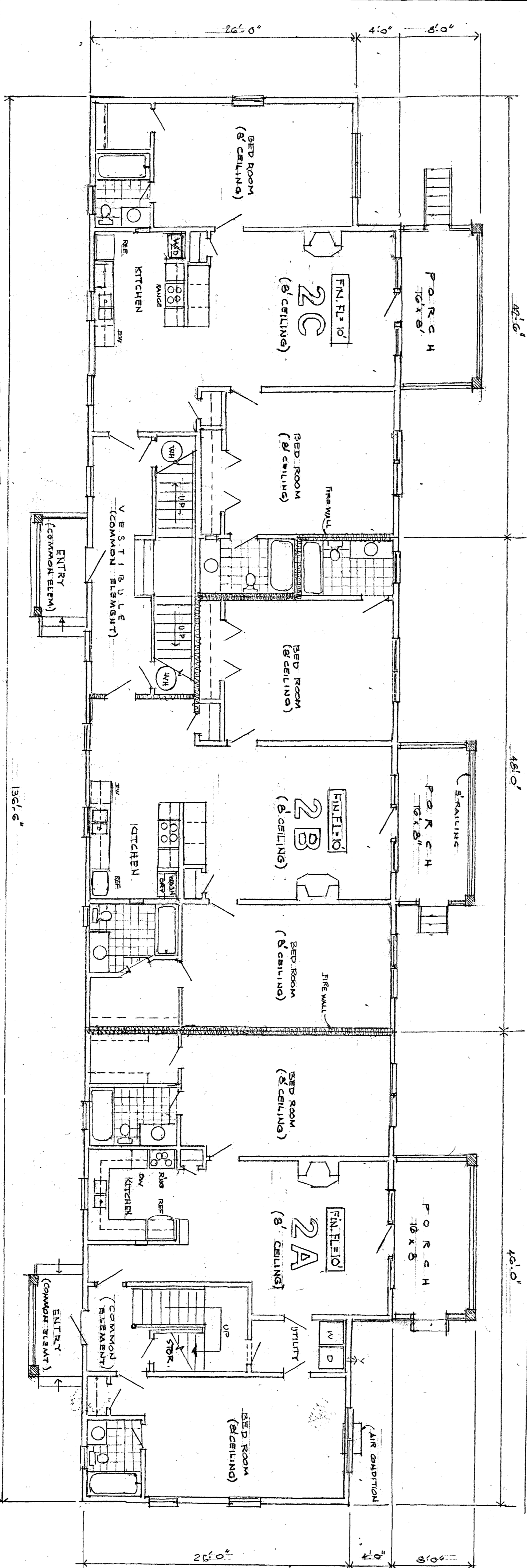
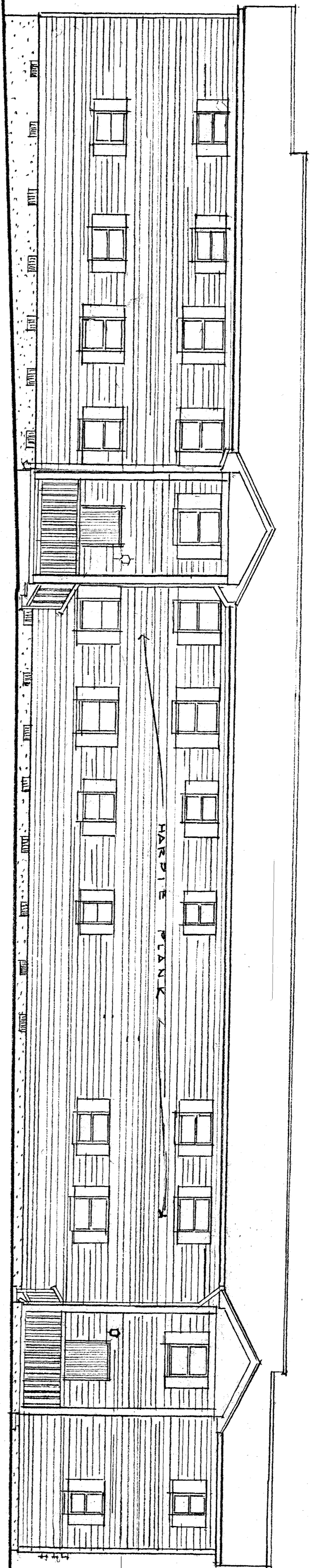
Filed for Record on 1/21/08
 at 1:21:08 PM
 and duly recorded and returned
 to the Clerk of the Circuit Court
 in Pinellas County, Florida
 on 1/21/08 at 1:21:32 PM

Fairway Villas at Mount Mitchell, LLC
 George W. Reynolds, Architect

Also see Declaration of Condominium
 recorded in Book 584 Page 183
 on 9-21-08 at 1:21:32 PM

Condo BK-1, Pg. 285

STATE PUBLIC RECORDS
 SHEET 4 of 5
 Pages 282-286
 1/27/08



NUMBER	SQUARE NET LIVING AREA	FLOOR AREA	COMMON ELEMENTS
2-A	1,070 SQ. FT.	128 SQ. FT.	178 SQ. FT.
2-B	1,200 SQ. FT.	128 SQ. FT.	305 SQ. FT.
2-C	1,200 SQ. FT.	128 SQ. FT.	305 SQ. FT.

FIRST FLOOR PLAN

FRONT ELEVATION

BUILDING 2

STATE OF FLORIDA
 COUNTY OF PINELLAS
 I, **George W. Reynolds**, a Notary Public for said State and County do hereby certify that **George W. Reynolds** personally appeared before me this **17th** day of **January**, 2008, and acknowledged to me that he executed the foregoing instrument as his free and voluntary act and deed.
 My Commission Expires **8/7/10**
George W. Reynolds
 Notary Public

PURSUANT TO THE PROVISIONS OF N.C.S. 476-2.109 UNDER SIGNED, CERTIFIES THAT THE PLAN AND PLANS OF FAIRWAY VILLAGES AT MT. MITCHELL CONDOMINIUM CONTAIN THE INFORMATION REQUIRED BY THAT SECTION AND FULLY AND ACCURATELY DEPICT THE LAYOUT, LOCATION, CEILING AND FLOOR ELEVATIONS, UNIT NUMBERS, DIMENSION OF THE UNITS AS BUILT.
George W. Reynolds
 ARCHITECT
 FLORIDA LICENSE 4549

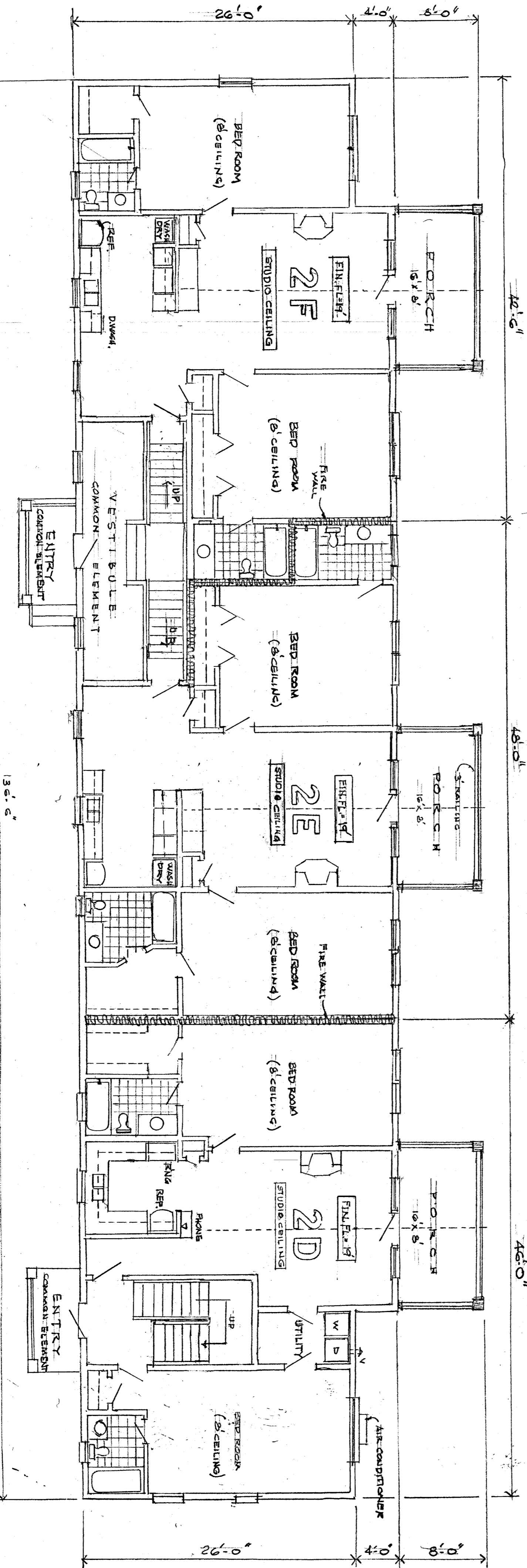
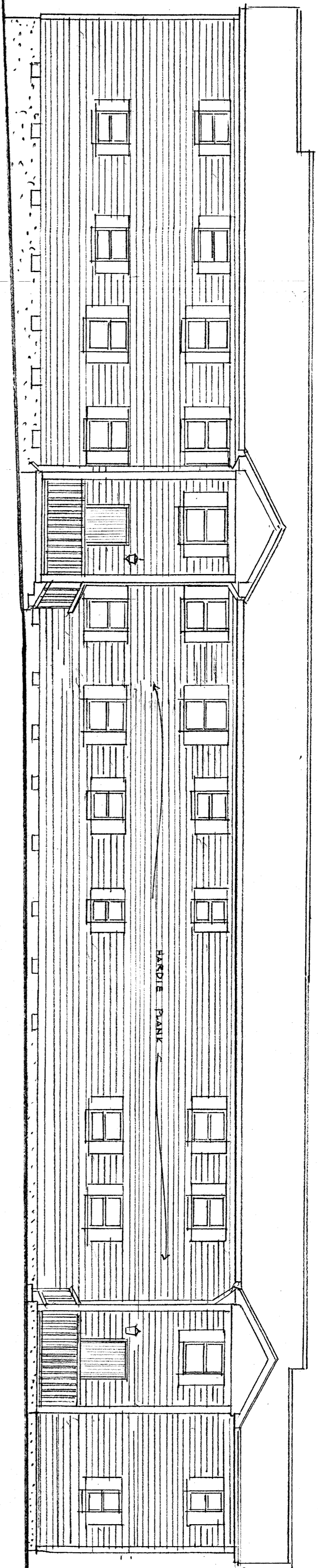
Fairway Villages at Mount Mitchell, LLC
 George W. Reynolds, Architect

Filed for registration 1/27/08, Volume P
 21 day of April 2008
 and duly recorded and verified.
 Book No. 6000 2 Page No. 285 of 286
Michael J. O'Donoghue
 Registrar of Deeds

Also see Declaration of Condominium in BK 584 Page 193 on 4/21/08 at 1:27:02 PM

Condo Bk-1, Pg. 286

ESJ INCORPORATED
 SHEET 5 of 5
 Pages 282-286
 D14



NUMBER	NET LIVING AREA	PORCH COMMON ELEMENT	FOOTAGE
2-F	1,070 SQ. FT.	128 SQ. FT.	178 SQ. FT.
2-E	1,200 SQ. FT.	128 SQ. FT.	305 SQ. FT.
2-D	1,200 SQ. FT.	128 SQ. FT.	305 SQ. FT.

STATE OF FLORIDA
 COUNTY OF PINELLAS
 JAMES E. MORTON, A NOTARY PUBLIC FOR SAID STATE AND COUNTY DO HEREBY CERTIFY THAT GEORGE W. REYNOLDS PERSONALLY APPEARED BEFORE ME THIS DAY AND ACKNOWLEDGE THE EXECUTION OF THE FOREGOING INSTRUMENT THIS 26 DAY OF FEBRUARY, 2008.
 MY COMMISSION EXPIRES 8-7-10
 Notary Public

PURSUANT TO THE PROVISIONS OF N.C.G.S. 47C-2-103, THE UNDERSIGNED CERTIFIES THAT THE PLAN AND PARTS OF FAIRWAY VILAS AT MT. MITCHELL CONDOMINIUM CONTAIN THE INFORMATION REQUIRED BY THAT SECTION AND FULLY AND ACCURATELY DEPICT THE LAYOUT, LOCATION, CEILING AND FLOOR ELEVATIONS, UNIT NUMBERS, DIMENSIONS OF THE UNITS AS BUILT.

George W. Reynolds, LLC
 George W. Reynolds, Architect
 Florida License #4544

1:22:12 PM
 21 day of April 2008
 and duly recorded and verified.
 Book No. Cond-1 Page No. 282-4-286
 William J. ...
 also see publication of Condominium filed in BK 584 Pg 193 on 4-21-08 at 1:28:52 PM