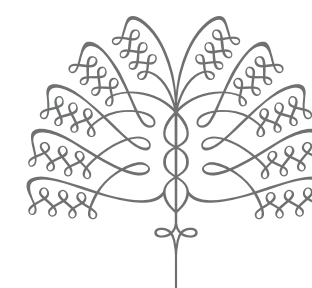


RESIDENCE D

FLOORS 27-33

2 BEDROOMS | 2.5 BATHS | DEN
1,622 SF

28D \$3.96m



RAFFLES
BOSTON BACK BAY
HOTEL & RESIDENCES

FEATURES

CORNER HOME WITH DOWNTOWN,
OLD AND NEW HANCOCK VIEWS

FORMAL ENTRY GALLERY WITH COFFERED CEILING

POWDER ROOM

BAR

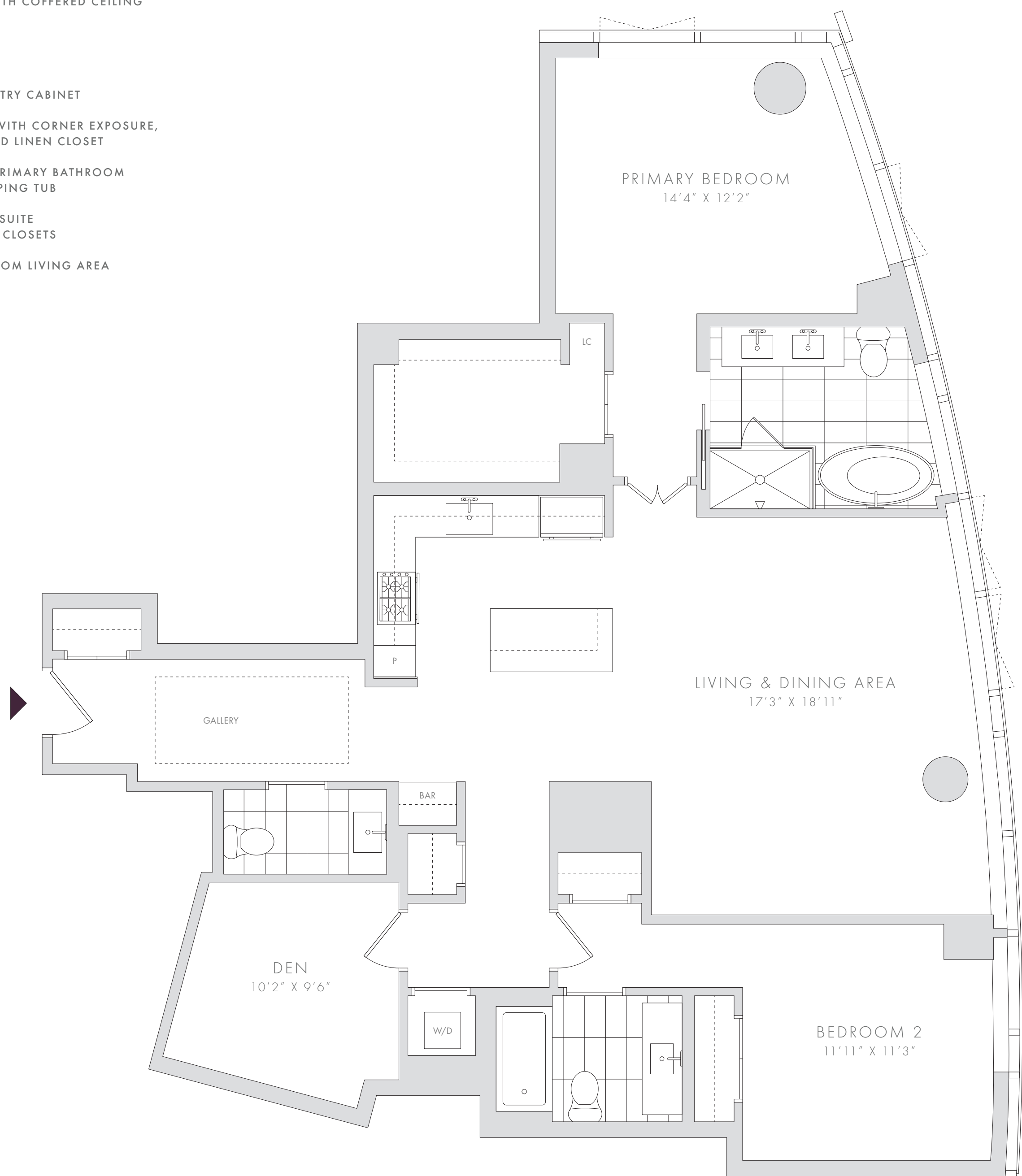
ISLAND KITCHEN WITH PANTRY CABINET

PRIMARY BEDROOM SUITE WITH CORNER EXPOSURE,
LARGE WALK-IN CLOSET AND LINEN CLOSET

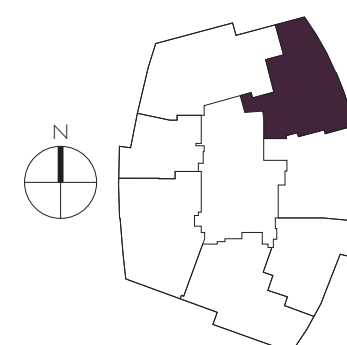
FIVE FIXTURE WINDOWED PRIMARY BATHROOM
WITH FREE-STANDING STEEPING TUB

GUEST BEDROOM WITH EN-SUITE
FULL BATHROOM AND TWO CLOSETS

PRIVATE DEN SEPARATED FROM LIVING AREA



NOTES: _____



PLANS, DIMENSIONS AND FEATURES SHOWN ARE APPROXIMATE AND ARE SUBJECT TO CHANGE WITHOUT NOTICE OR OBLIGATION. VARIATIONS MAY OCCUR DEPENDING, FOR EXAMPLE, ON CONSTRUCTION VARIANCES, LOCATION OF UNIT AND/OR MECHANICAL OR STRUCTURAL REQUIREMENTS.

