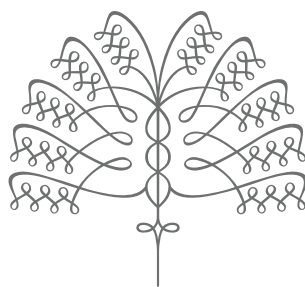


RESIDENCE E

FLOORS 27-33

2 BEDROOMS | 2.5 BATHS
1,471 SF

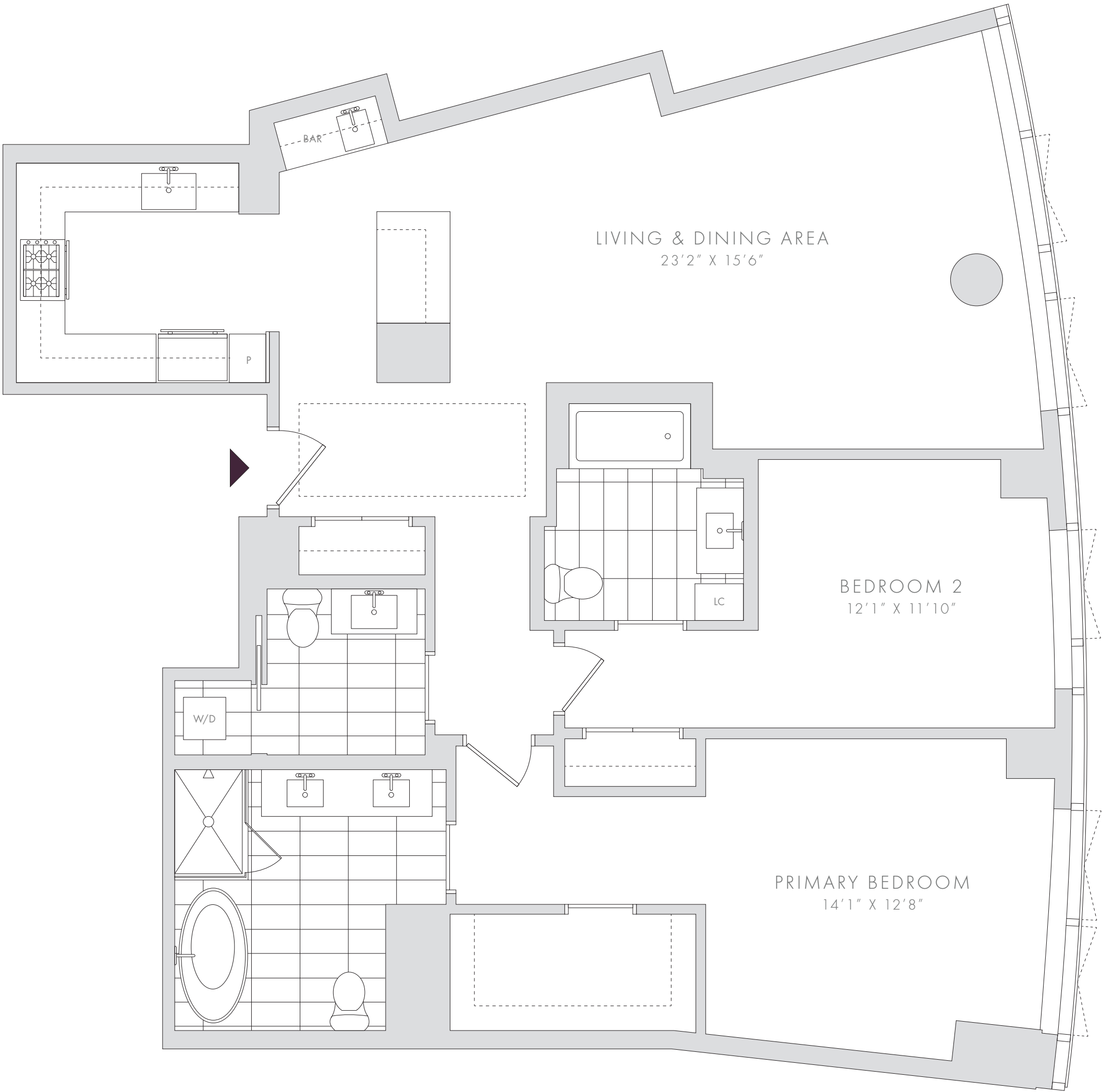
28E \$3.25m



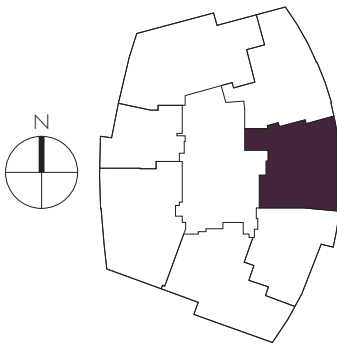
RAFFLES
BOSTON BACK BAY
HOTEL & RESIDENCES

FEATURES

- FORMAL ENTRY GALLERY WITH COFFERED CEILING
- POWDER ROOM
- WET BAR
- CHEF’S KITCHEN WITH ISLAND AND PANTRY CABINET
- PRIMARY BEDROOM SUITE WITH WALK-IN CLOSET
- FIVE FIXTURE PRIMARY BATHROOM WITH FREE-STANDING STEEPING TUB
- GUEST BEDROOM WITH EN-SUITE FULL BATHROOM AND LINEN CLOSET



NOTES: _____



PLANS, DIMENSIONS AND FEATURES SHOWN ARE APPROXIMATE AND ARE SUBJECT TO CHANGE WITHOUT NOTICE OR OBLIGATION. VARIATIONS MAY OCCUR DEPENDING, FOR EXAMPLE, ON CONSTRUCTION VARIANCES, LOCATION OF UNIT AND/OR MECHANICAL OR STRUCTURAL REQUIREMENTS.

