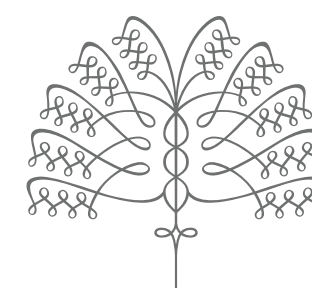


# RESIDENCE C

FLOORS 27-33

3 BEDROOMS | 2.5 BATHS  
1,997 SF

28C \$7.58m



**RAFFLES**  
BOSTON BACK BAY  
HOTEL & RESIDENCES

## FEATURES

CORNER HOME WITH NORTHWESTERN EXPOSURE AND CHARLES RIVER VIEWS

FORMAL ENTRY FOYER WITH COFFERED CEILING

POWDER ROOM

WET BAR

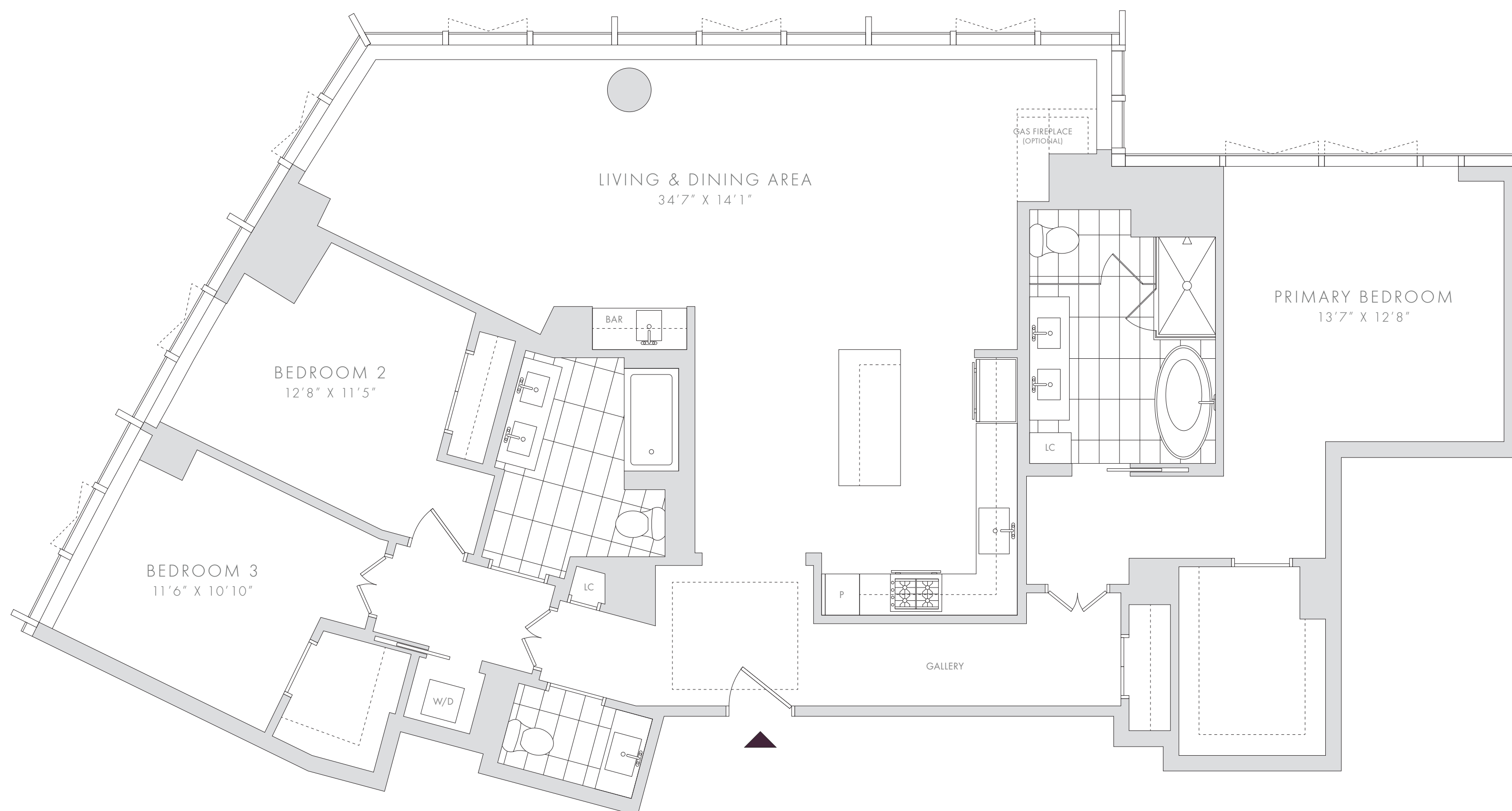
ISLAND KITCHEN WITH PANTRY CABINET

PRIMARY BEDROOM SUITE WITH GALLERY ENTRY AND OVERSIZED WALK-IN CLOSET

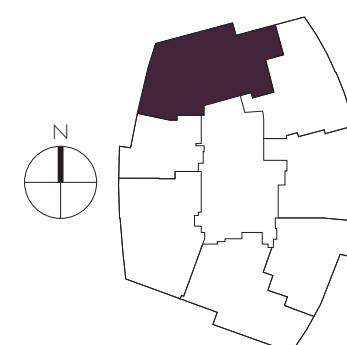
FIVE FIXTURE PRIMARY BATHROOM WITH LINEN CLOSET AND FREE-STANDING STEEPING TUB

SECONDARY BEDROOMS WITH DUAL SINK BATHROOM AND ADDITIONAL LINEN CLOSET

POTENTIAL TO ADD OPTIONAL GAS FIREPLACE



NOTES: \_\_\_\_\_  
\_\_\_\_\_  
\_\_\_\_\_  
\_\_\_\_\_



PLANS, DIMENSIONS AND FEATURES SHOWN ARE APPROXIMATE AND ARE SUBJECT TO CHANGE WITHOUT NOTICE OR OBLIGATION. VARIATIONS MAY OCCUR DEPENDING, FOR EXAMPLE, ON CONSTRUCTION VARIANCES, LOCATION OF UNIT AND/OR MECHANICAL OR STRUCTURAL REQUIREMENTS.

