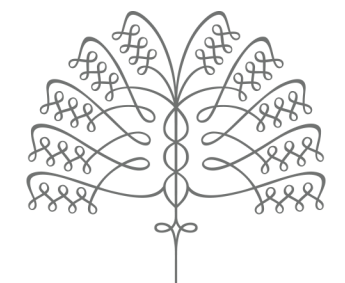
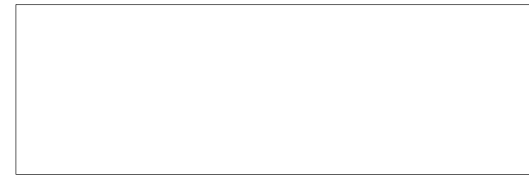


RESIDENCE C

FLOORS 21-26

2 BEDROOMS | 2.5 BATHS
1,425 SF



RAFFLES
BOSTON BACK BAY
HOTEL & RESIDENCES

FEATURES

CORNER HOME WITH NORTHWESTERN EXPOSURE AND CHARLES RIVER VIEWS

FORMAL ENTRY FOYER WITH COFFERED CEILING

POWDER ROOM

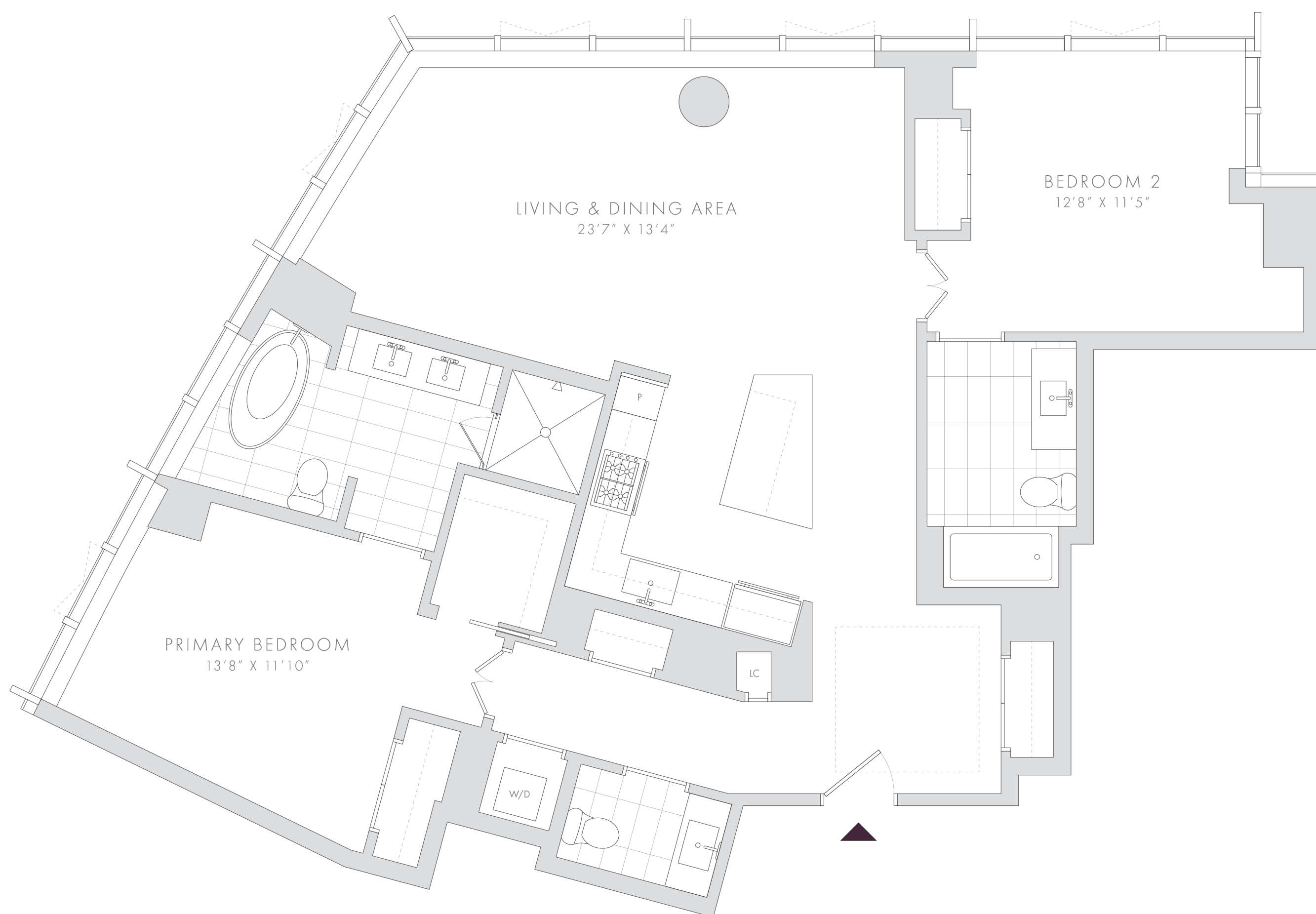
ISLAND KITCHEN WITH ARCHITECTURAL ISLAND AND PANTRY CABINET

PRIMARY BEDROOM SUITE WITH WALK-IN CLOSET AND TWO ADDITIONAL CLOSETS

FIVE FIXTURE WINDOWED PRIMARY BATHROOM WITH FREE-STANDING STEEPING TUB

GUEST BEDROOM WITH EN-SUITE FULL BATHROOM

LINEN CLOSET



NOTES: _____



PLANS, DIMENSIONS AND FEATURES SHOWN ARE APPROXIMATE AND ARE SUBJECT TO CHANGE WITHOUT NOTICE OR OBLIGATION. VARIATIONS MAY OCCUR DEPENDING, FOR EXAMPLE, ON CONSTRUCTION VARIANCES, LOCATION OF UNIT AND/OR MECHANICAL OR STRUCTURAL REQUIREMENTS.

