



PENTHOUSE COLLECTION  
FLOOR 59

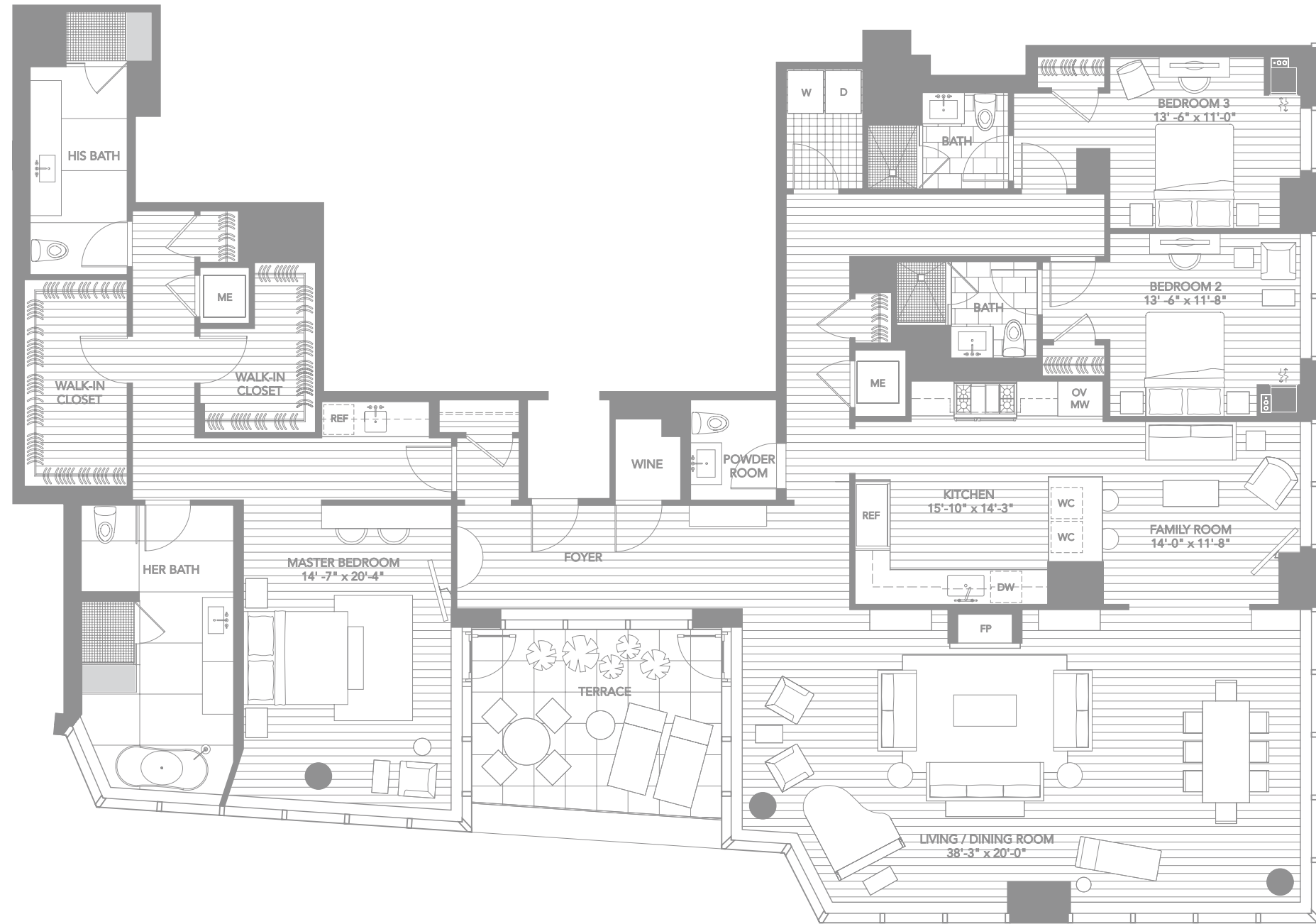
PH4E

3 bedroom, 4.5 bath,  
living/dining room, kitchen,  
family room, terrace  
3,435 sq. ft.

\$ 9,750,000

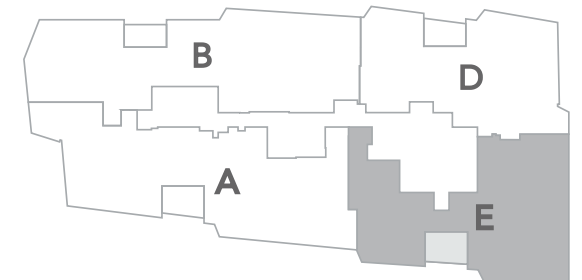
\$ 4,293 Monthly Condo Fee (\$ 1.25 PSF)

Includes 2 Reserved Parking Spaces



MILLENNIUM TOWER  
BOSTON

One Franklin Street, Boston, MA 02110



This is not an offer to sell but is intended for informational purposes only. These are Preliminary Unit Plans. All measurements shown on these Preliminary Unit Plans are pre-construction estimates. The final unit plan with actual dimensions and square footage incorporated in the Condominium Documents may not be as so shown. While certain floor plans show furniture layouts, no furniture is included with the purchase of a unit. The depiction of wood flooring, stone tile and kitchen appliances are for illustrative purposes only. While certain photographs shown are intended to be similar to the view from some units, similarity to views is not guaranteed. Renderings are artist's impression only. The developer reserves the right to make modifications in materials, specifications, plans, signs, scheduling and delivery of units without notice. No Federal agency has judged the merits or value, if any, of this property. This material shall not constitute an offer in any state where prior registration is required.

