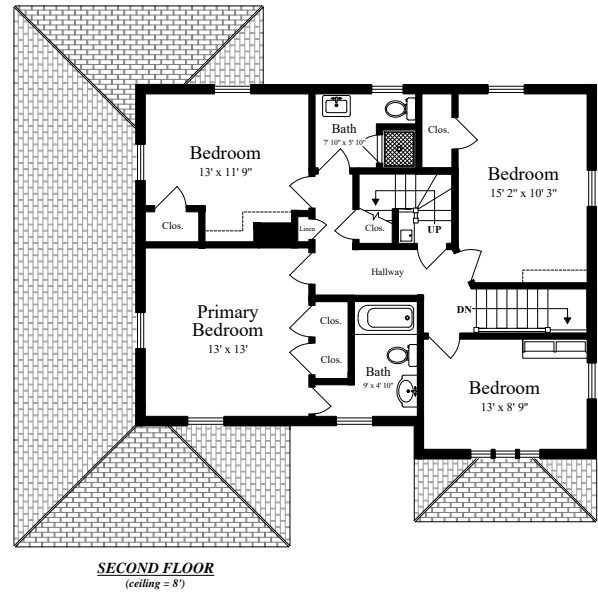
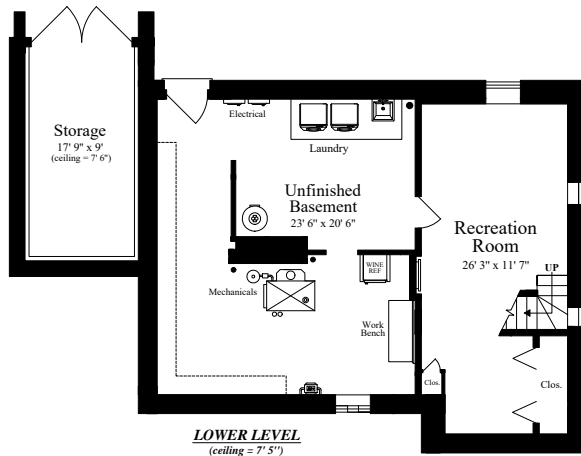
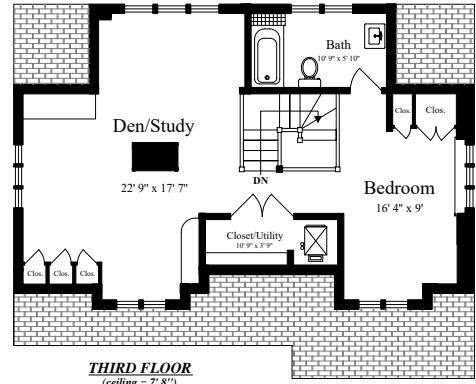
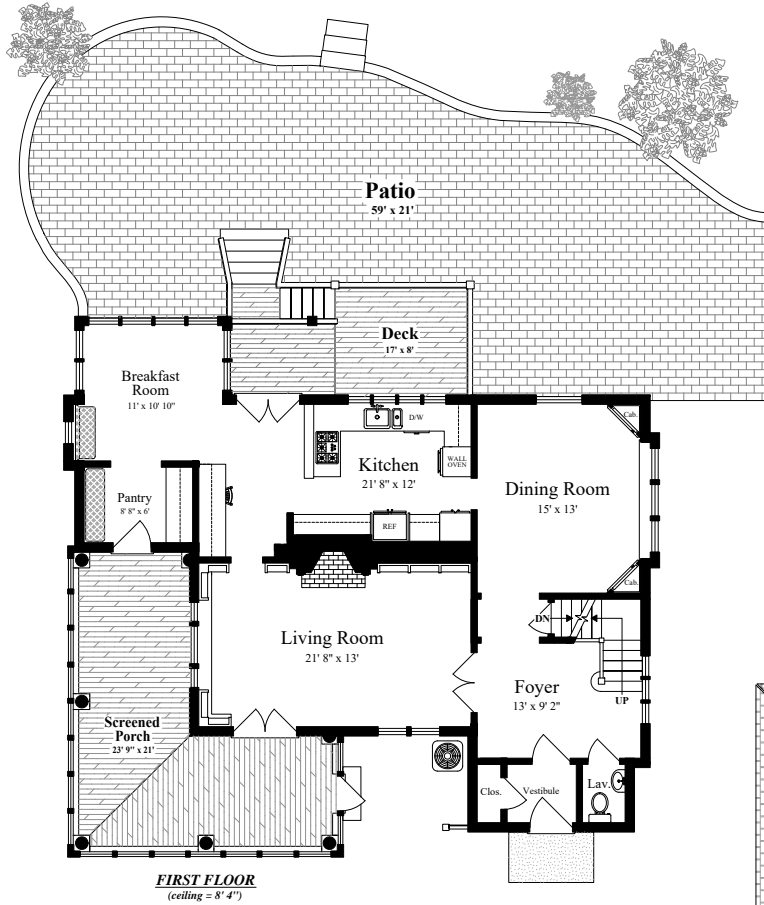


179 Clinton Road

Brookline, Massachusetts 02445

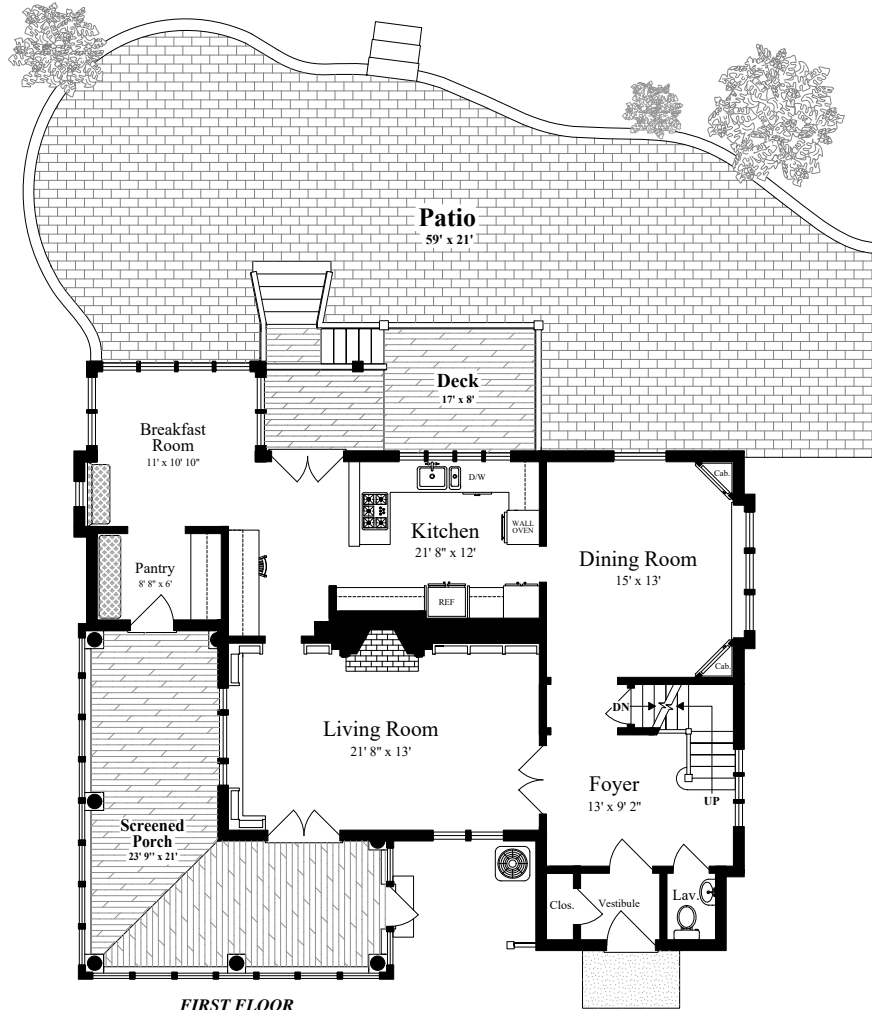


The details and specifications of these floor plans are approximations only. No warranties are made as to their accuracy. For more information visit us at www.designsbyjohnclark.com
© 2024 Designs by John Clark, All Rights Reserved

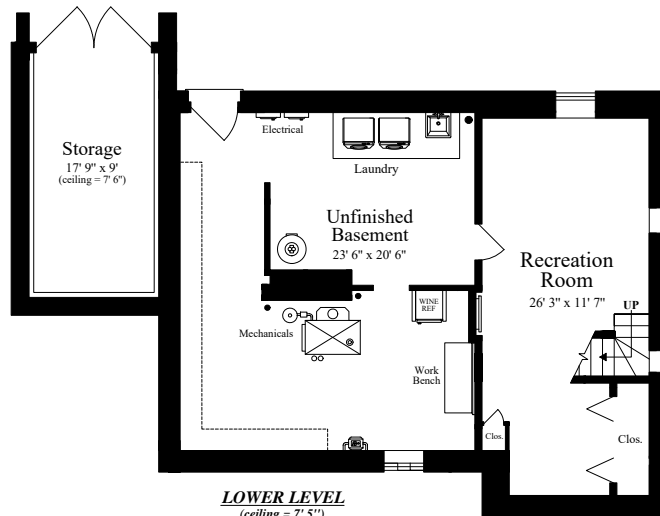


179 Clinton Road

Brookline, Massachusetts 02445



FIRST FLOOR
(ceiling = 8' 4")



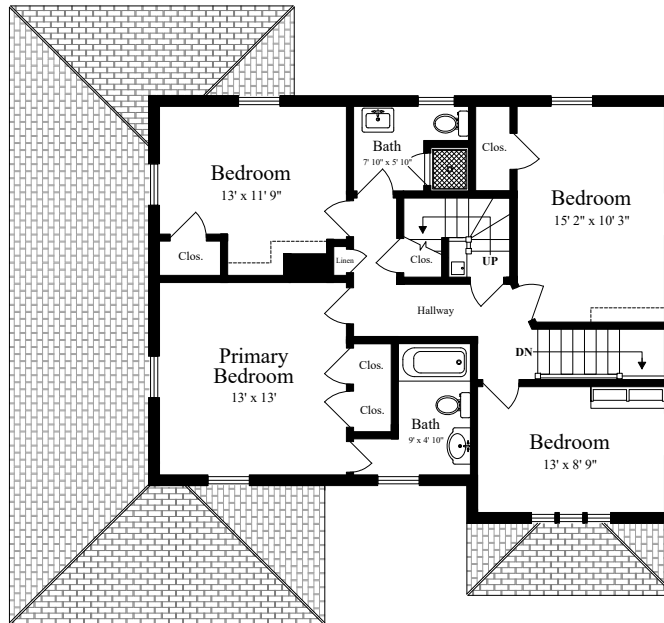
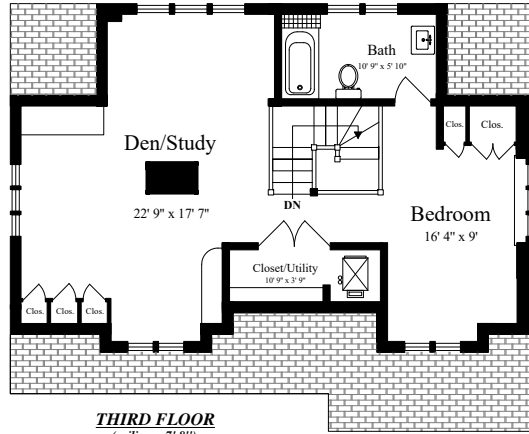
LOWER LEVEL
(ceiling = 7' 5")



The details and specifications of these floor plans are approximations only. No warranties are made as to their accuracy. For more information visit us at www.designsbyjohnclark.com
© 2024 Designs by John Clark, All Rights Reserved



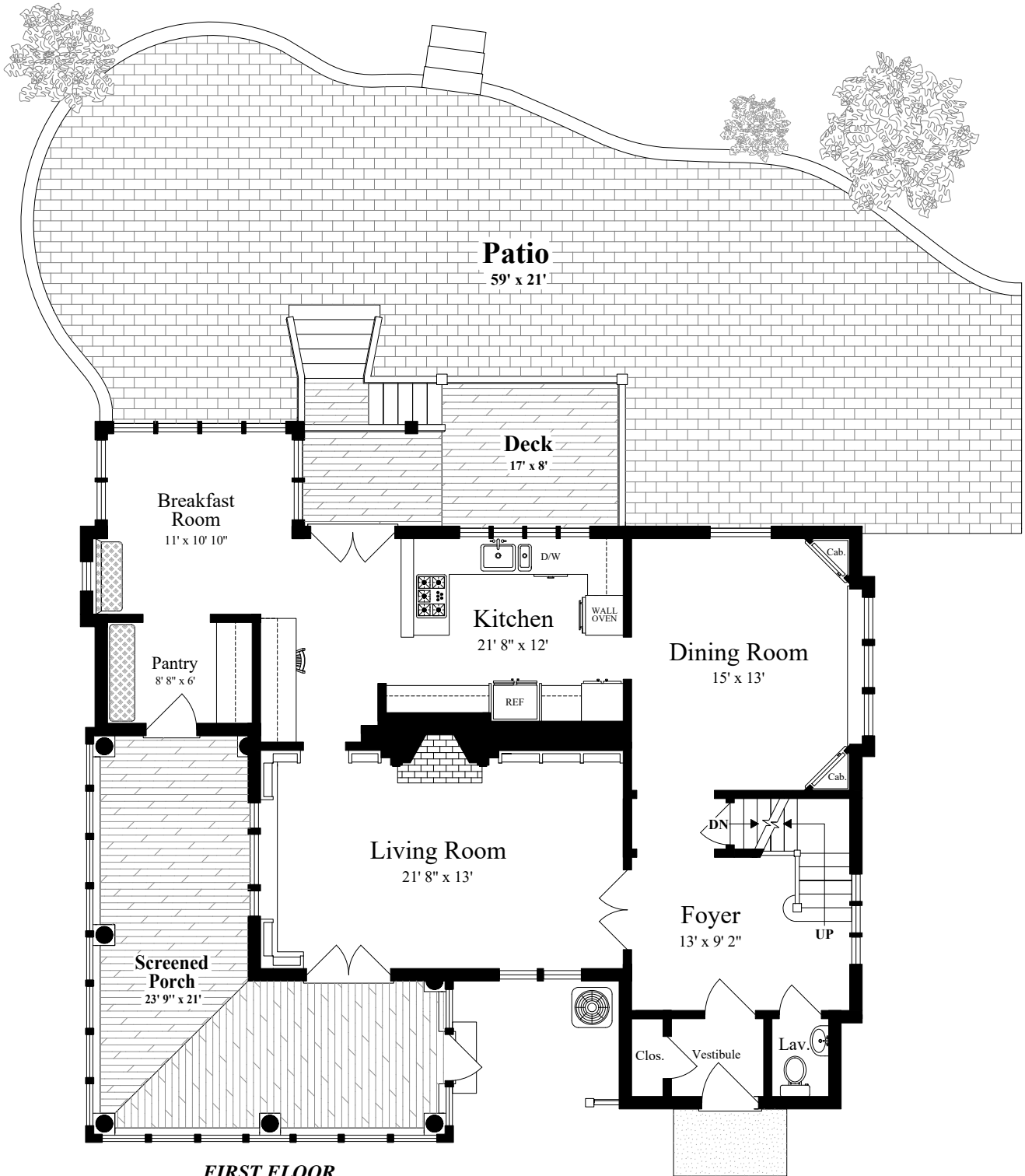
179 Clinton Road
Brookline, Massachusetts 02445



The details and specifications of these floor plans are approximations only. No warranties are made as to their accuracy. For more information visit us at www.designsbyjohnclark.com
© 2024 Designs by John Clark, All Rights Reserved



179 Clinton Road
Brookline, Massachusetts 02445



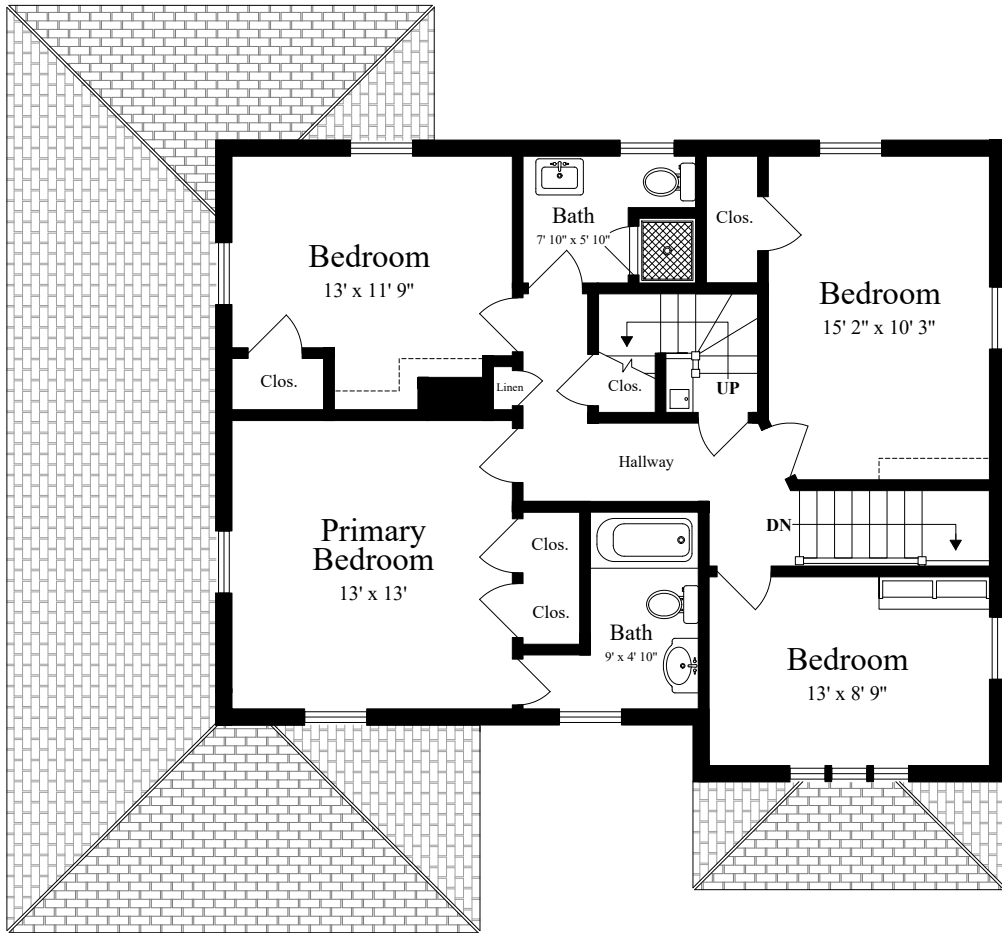
FIRST FLOOR
(ceiling = 8' 4")



The details and specifications of these floor plans are approximations only. No warranties are made as to their accuracy. For more information visit us at www.designsbyjohnclark.com
© 2024 Designs by John Clark, All Rights Reserved



179 Clinton Road
Brookline, Massachusetts 02445



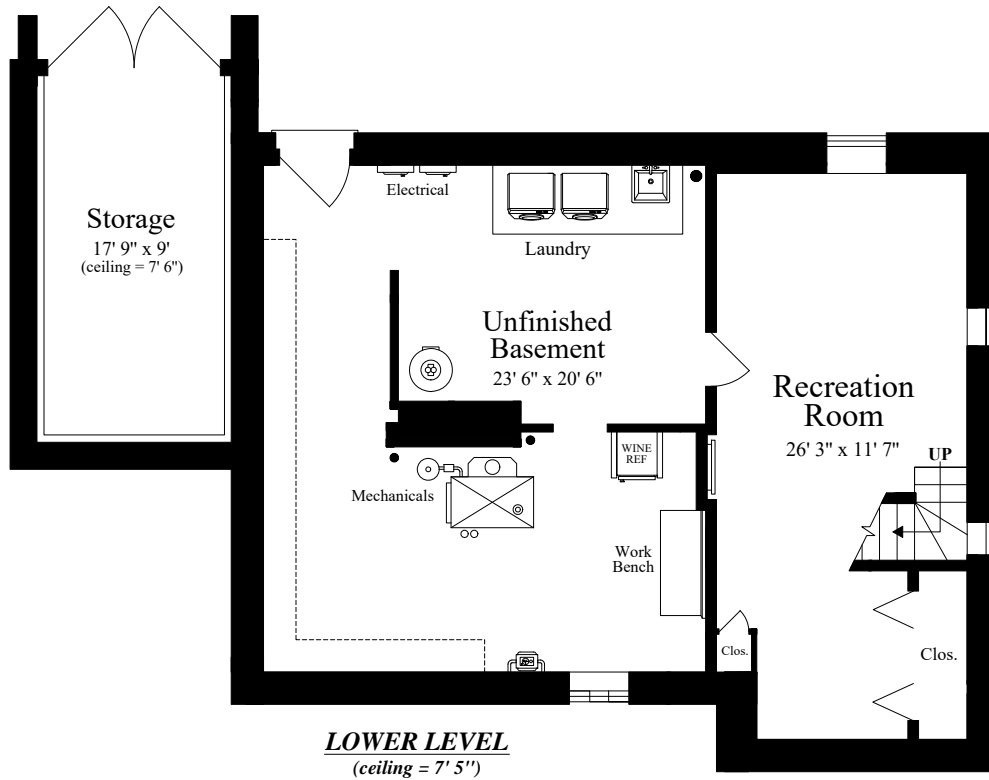
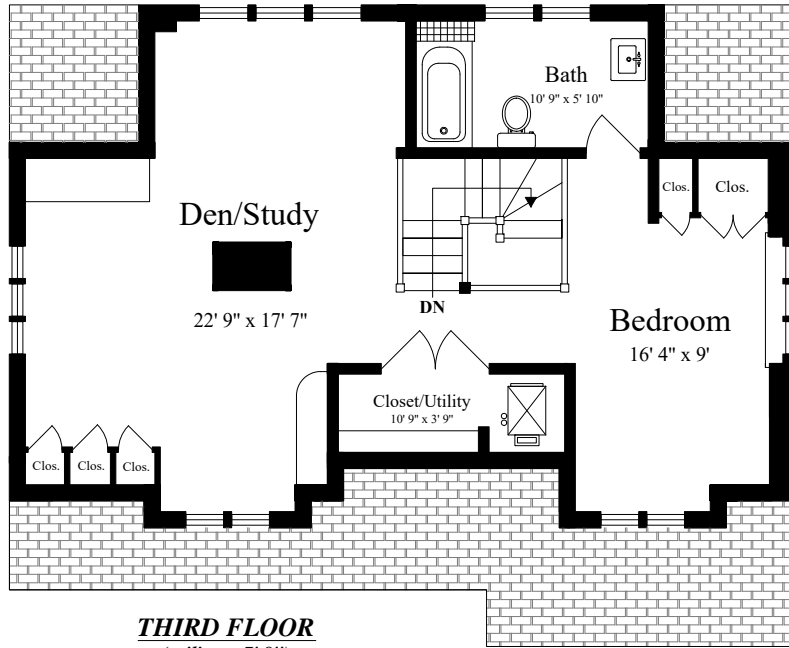
SECOND FLOOR
(ceiling = 8')



The details and specifications of these floor plans are approximations only. No warranties are made as to their accuracy. For more information visit us at www.designsbyjohnclark.com
© 2024 Designs by John Clark, All Rights Reserved



179 Clinton Road
Brookline, Massachusetts 02445



The details and specifications of these floor plans are approximations only. No warranties are made as to their accuracy. For more information visit us at www.designsbyjohnclark.com
 © 2024 Designs by John Clark, All Rights Reserved

