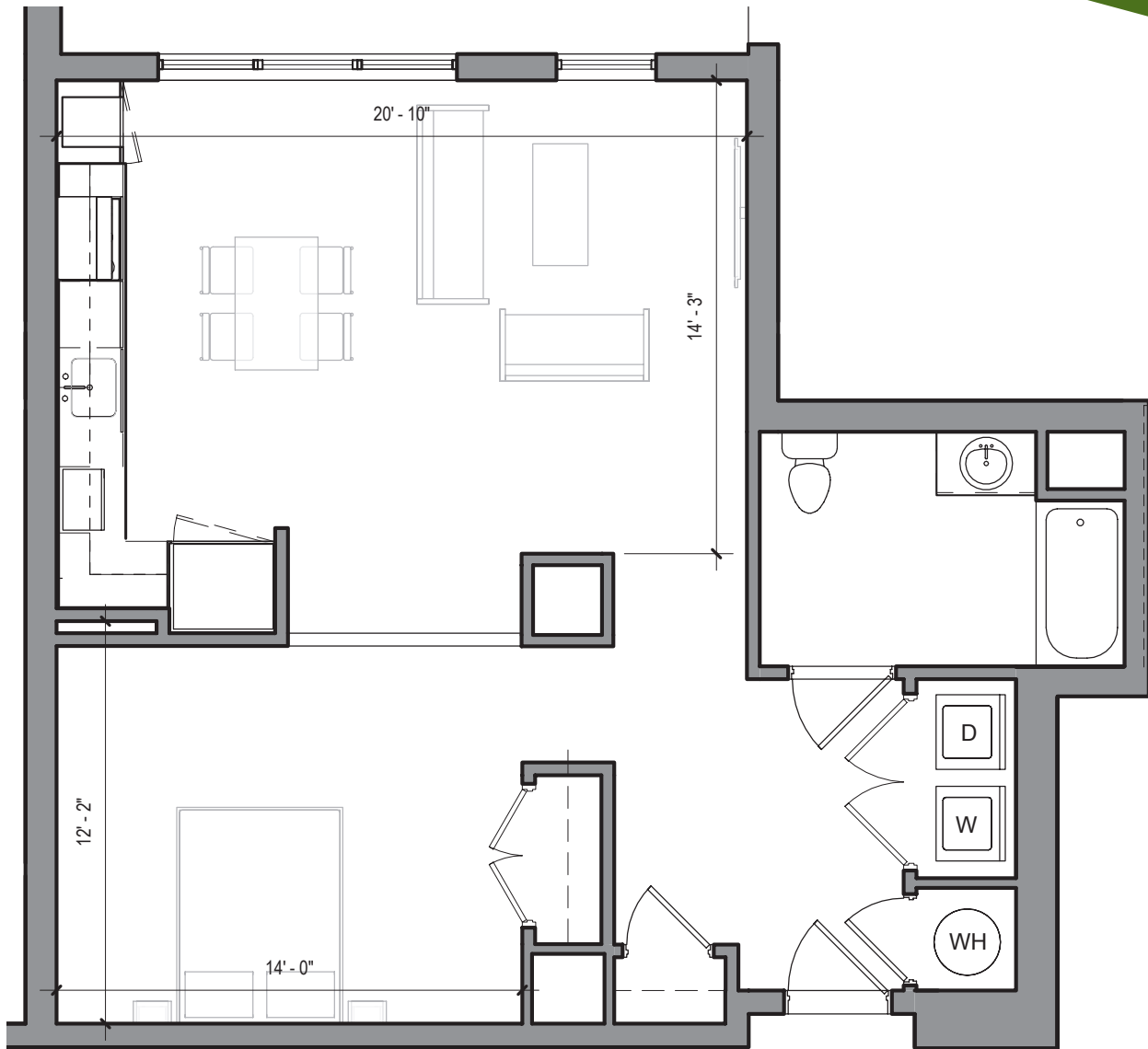


FLOOR PLAN



A Mount Vernon Company Development

Allston, MA | 617.651.3500 | EdgeAllston.com



TYPE P2

Studio HC | 1 Bath | 765 sq. ft.

Floor plans are for presentation purposes only. Layout and all dimensions are approximate, and may vary from the "as built" plans due to uniqueness of the building and construction conditions and circumstances. The developer reserves the right to make alterations and substitutions at any time.

EDGE
in the GREEN DISTRICT