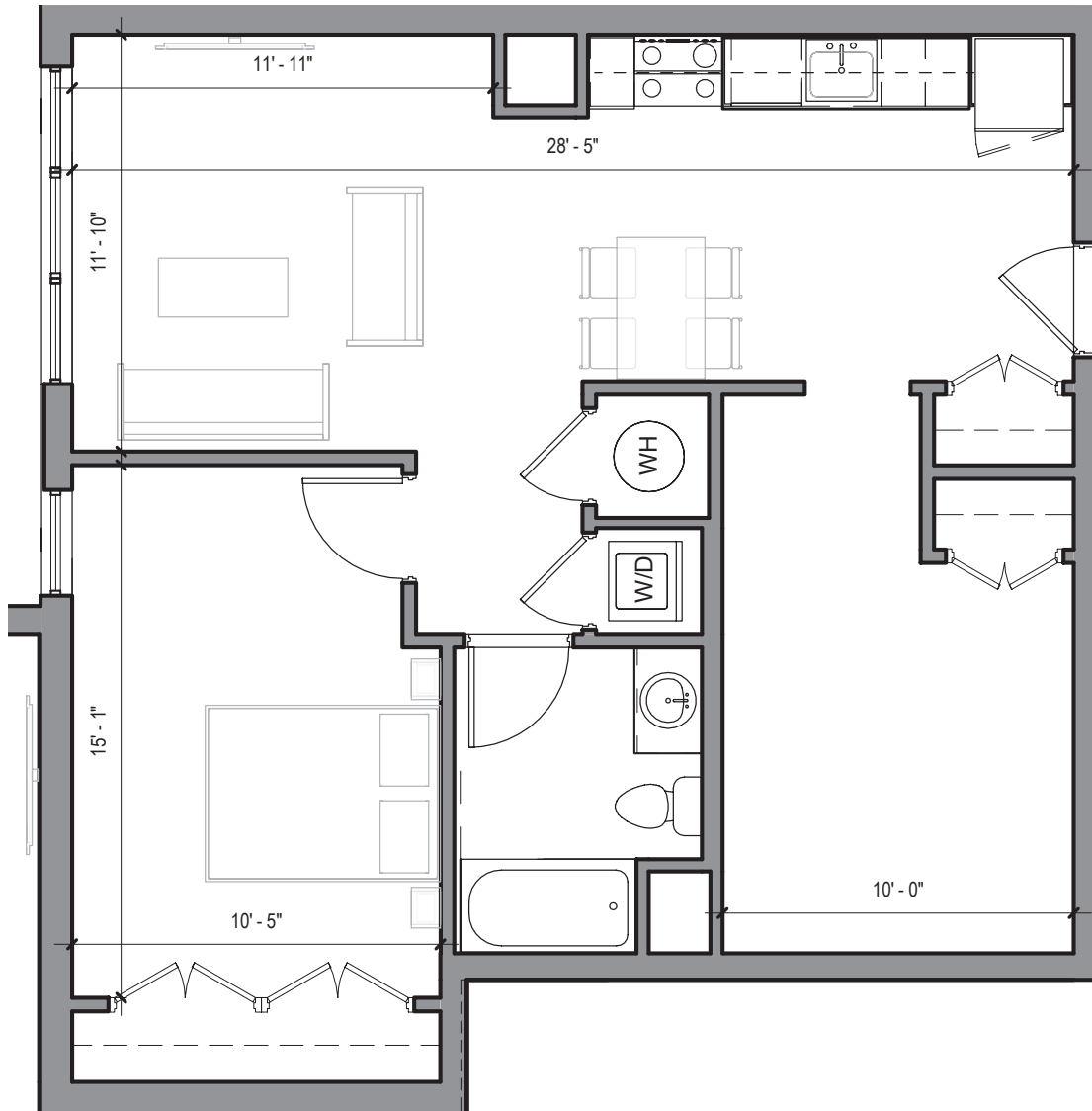


# FLOOR PLAN



## TYPE N1

1 Bed + Den | 1 Bath | 776 sq. ft.

Floor plans are for presentation purposes only. Layout and all dimensions are approximate, and may vary from the "as built" plans due to uniqueness of the building and construction conditions and circumstances. The developer reserves the right to make alterations and substitutions at any time.



A Mount Vernon Company Development

Allston, MA | 617.651.3500 | [EdgeAllston.com](http://EdgeAllston.com)

**EDGE**  
in the GREEN DISTRICT