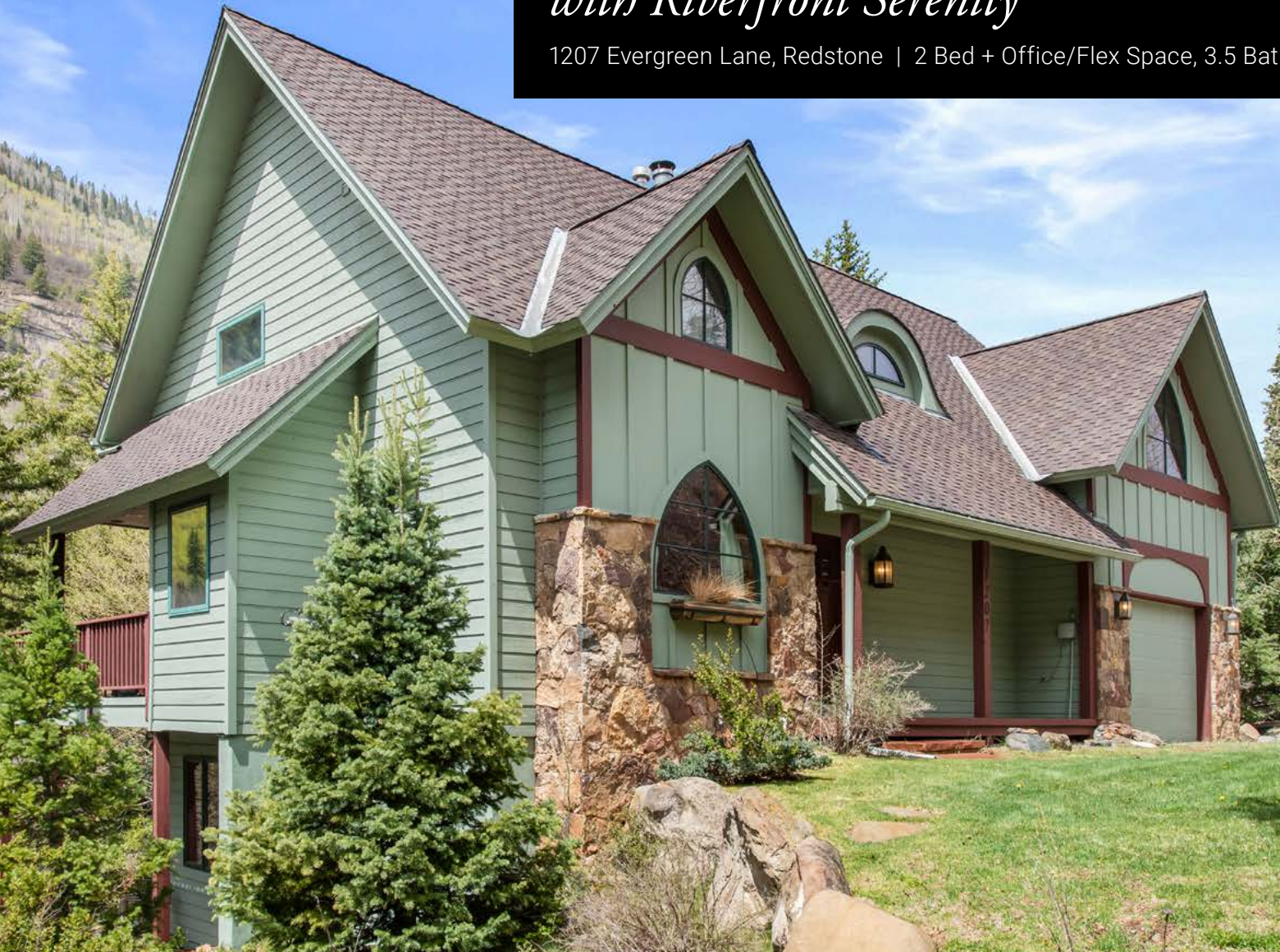


ELEVATED MOUNTAIN LIVING

with Riverfront Serenity

1207 Evergreen Lane, Redstone | 2 Bed + Office/Flex Space, 3.5 Bath | 0.69 Acres



COLDWELL BANKER
MASON MORSE

A Coldwell Banker Mountain Properties Company



RIVERFRONT MOUNTAIN RETREAT

Overlooking the Crystal River, this immaculate, custom home offers everything you could ask for in a mountain retreat. Vaulted ceilings, huge rock fireplace, wood floors, generous den with a gas stove and wet bar, art room, breakfast nook, 2 bedrooms + office/flex space, 4 baths, garage, the list goes on... A well-defined path offers access to the river and a tree-shaded picnic area. Located in the midst of two National Forests and two Wilderness Areas, the recreational opportunities are endless. The eclectic towns of Redstone and Marble are nearby with their wonderful restaurants, galleries, shops, and colorful histories. Mostly furnished with functional, yet unique choices, this home is ready for your family to enjoy right away.



DETAILS

Address: 1207 Evergreen Lane
City: Redstone
Bed: 2 + Office/Flex Space
Bath: 3.5
Size: 3,221 sq. ft.
MLS#: 192748
Taxes: \$4,065 (2025)
HOA: \$1,400/year
Year Built: 1996

JEFF BIER

Broker Associate
970.379.0523
jeffbier@masonmorse.com
www.cbmasonmorse.com

FEATURES

- Combination of hardwood, tile and carpeted floors
- Deck overlooking the river just off kitchen and dining area
- Patio off the downstairs with BBQ and river views
- Upstairs mezzanine overlooks the great room
- Two ensuite bedrooms plus additional guest room and adjacent bath
- Picnic area overlooking the river
- Oversize garage with storage
- Adjacent, riverfront lot with well and power is available at \$395,000



COLDWELL BANKER
MASON MORSE

A Coldwell Banker Mountain Properties Company



JEFF BIER

Broker Associate

970.379.0523

jeffbier@masonmorse.com

www.cbmasonmorse.com



COLDWELL BANKER
MASON MORSE

A Coldwell Banker Mountain Properties Company