



TIDEMANN
REAL ESTATE

FOR SALE

DEVELOPMENT LAND

Woodlawn and K-254, NE/c, Kechi, KS 67067



2.12 ACRES (B)

MIN. AVAILABLE ACREAGE

10.12 ACRES (C.F.)

MAX. CONTIGUOUS ACREAGE

I-1, INDUSTRIAL
ZONING

AVAILABLE
UTILITIES

PROPERTY HIGHLIGHTS

- Development land available in Kechi, KS.
- Located near the intersection of Woodlawn and Highway K-254.
- Excellent access to and visibility from K-254.
- Close proximity to all other major arterials via K-254.

DESCRIPTION	AVAILABLE	SALES PRICE	STATUS
A: Lot 1, Block B, 2nd Addition	93,363 SF (2.14 A)	\$4.00/SF	AVAILABLE
B: Lot 2, Block B, 2nd Addition	92,685 SF (2.12 A)	\$4.00/SF	AVAILABLE
C: Lot 4, Block B, 2nd Addition	326,122 SF (7.49 A)	\$2.00/SF	AVAILABLE
F: Lot 6, Block A, 3rd Addition	114,762 Sf (2.63 A)	\$2.00/SF	AVAILABLE



ReeceNichols
SOUTH CENTRAL KANSAS
An Independently Owned and Operated Member of the Reece & Nichols Alliance, Inc.

Offered Exclusively By:

BRADLEY TIDEMANN, SIOR
316-650-8853 | bradley@tidemannre.com



TIDEMANN
REAL ESTATE

FOR SALE

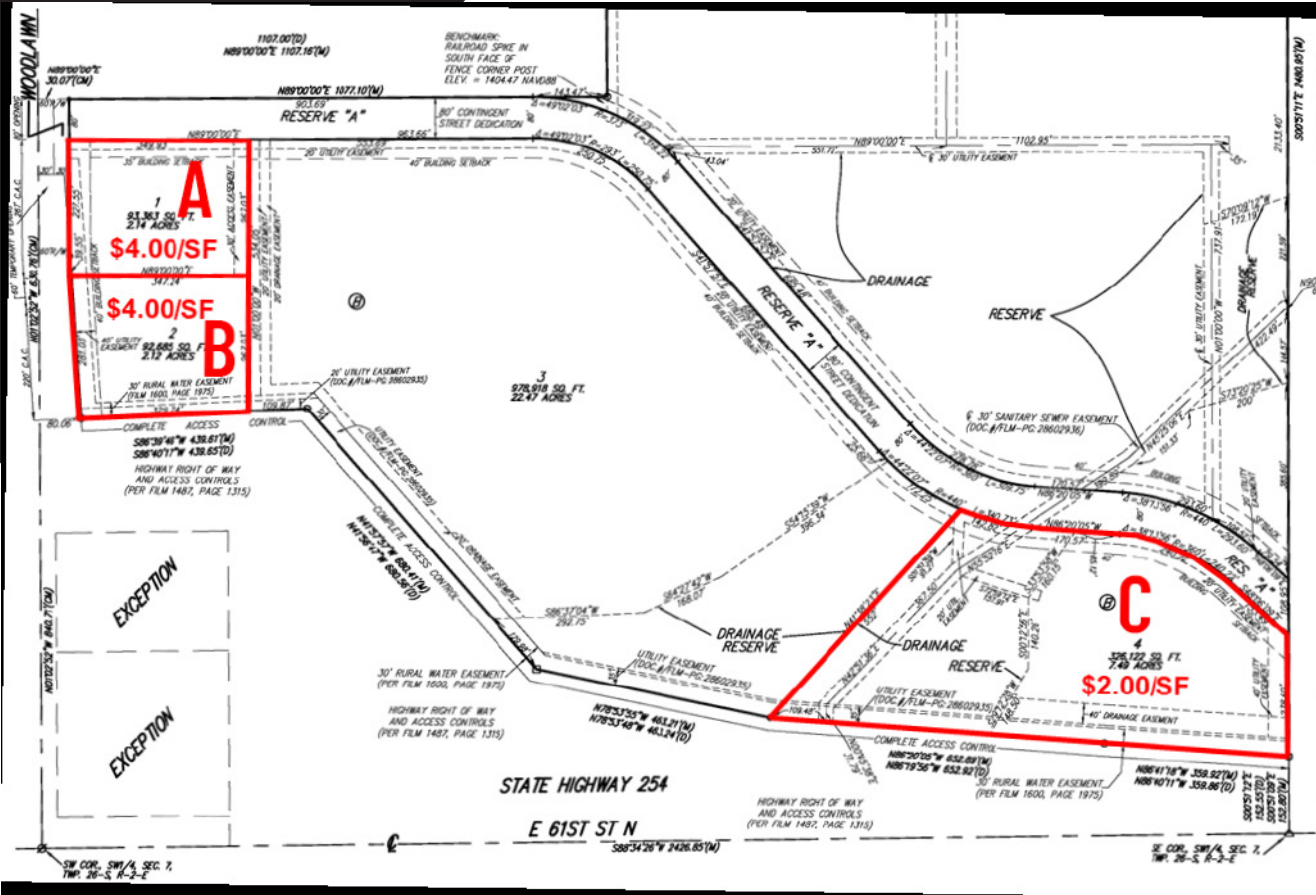
DEVELOPMENT LAND

Woodlawn and K-254, NE/c, Kechi, KS 67067

YOUNG INDUSTRIAL 2ND ADDITION

2024 TAXES

A: Generals	\$1.66	Specials	\$5,732.24
B: Generals	\$1.66	Specials	\$5,724.51
C: Generals	\$20.33	Specials	\$4,662.23



All information furnished regarding property for sale, lease, exchange or financing is from sources deemed reliable but no guarantee is made or responsibility assumed as to its accuracy or completeness and you are advised to make your own analysis and verification. Agent hereby notifies prospective buyer/lessee that (a) Agent will be acting as a designated agent of seller/lessor with the duty to represent seller/lessor's interest; and (b) Information given to Agent will be disclosed to seller/lessor.



ReeceNichols
SOUTH CENTRAL KANSAS

An Independently Owned and Operated Member of the Reece & Nichols Alliance, Inc.

Offered Exclusively By:

BRADLEY TIDEMANN, SIOR
316-650-8853 | bradley@tidemannre.com



TIDEMANN
REAL ESTATE

FOR SALE

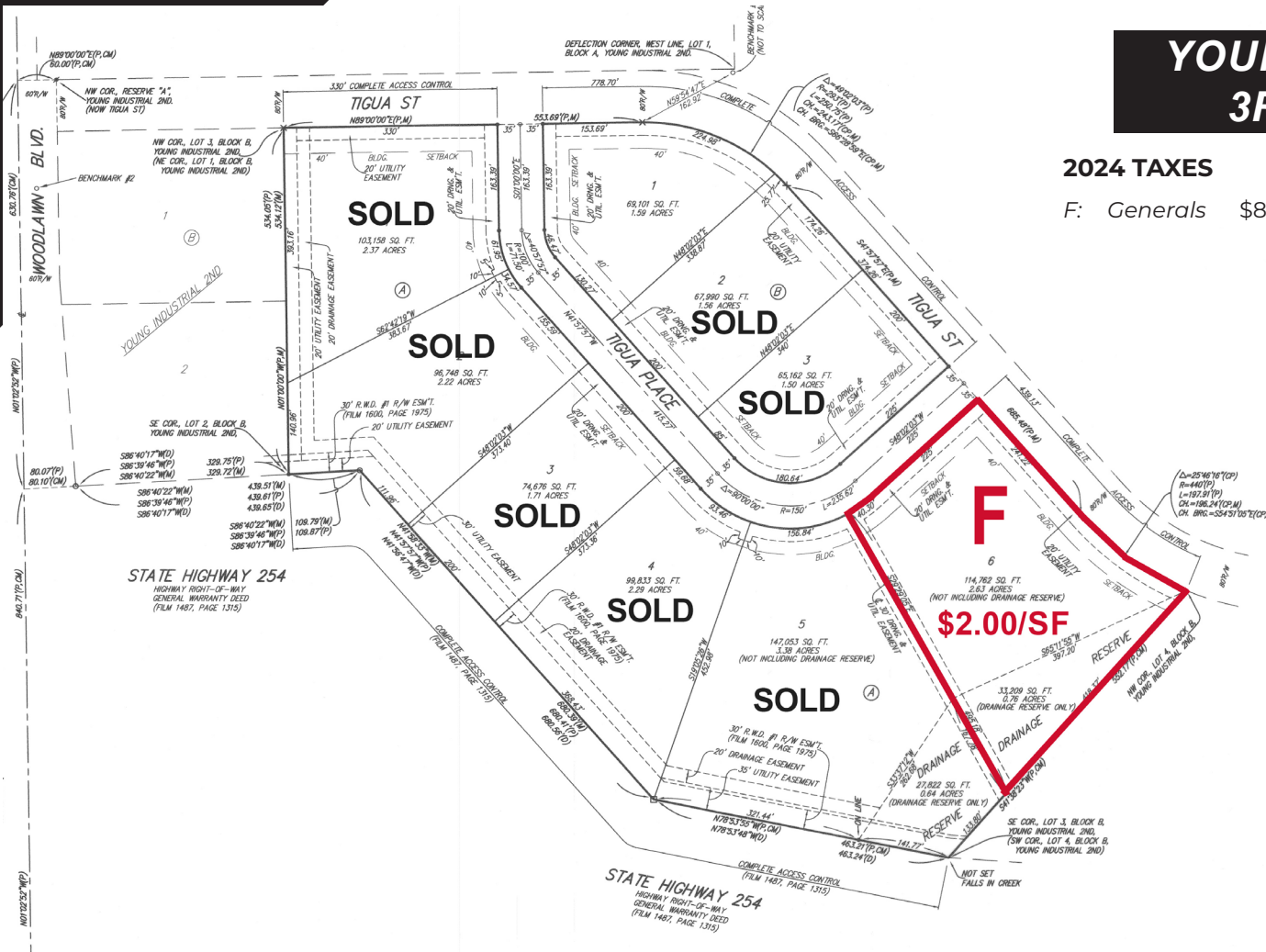
DEVELOPMENT LAND

Woodlawn and K-254, NE/c, Kechi, KS 67067

YOUNG INDUSTRIAL 3RD ADDITION

2024 TAXES

F: Generals \$8.70 Specials \$10,557.73



All information furnished regarding property for sale, lease, exchange or financing is from sources deemed reliable but no guarantee is made or responsibility assumed as to its accuracy or completeness and you are advised to make your own analysis and verification. Agent hereby notifies prospective buyer/lessee that (a) Agent will be acting as a designated agent of seller/lessor with the duty to represent seller/lessor's interest; and (b) Information given to Agent will be disclosed to seller/lessor.



ReeceNichols
SOUTH CENTRAL KANSAS
An Independently Owned and Operated Member of the Reece & Nichols Alliance, Inc.

Offered Exclusively By:

BRADLEY TIDEMANN, SIOR
316-650-8853 | bradley@tidemannre.com



TIDEMANN
REAL ESTATE

FOR SALE

DEVELOPMENT LAND

Woodlawn and K-254, NE/c, Kechi, KS 67067



All information furnished regarding property for sale, lease, exchange or financing is from sources deemed reliable but no guarantee is made or responsibility assumed as to its accuracy or completeness and you are advised to make your own analysis and verification. Agent hereby notifies prospective buyer/lessee that (a) Agent will be acting as a designated agent of seller/lessor with the duty to represent seller/lessor's interest; and (b) Information given to Agent will be disclosed to seller/lessor.



ReeceNichols
SOUTH CENTRAL KANSAS
An Independently Owned and Operated Member of the Reece & Nichols Alliance, Inc.

Offered Exclusively By:

BRADLEY TIDEMANN, SIOR
316-650-8853 | bradley@tidemannre.com

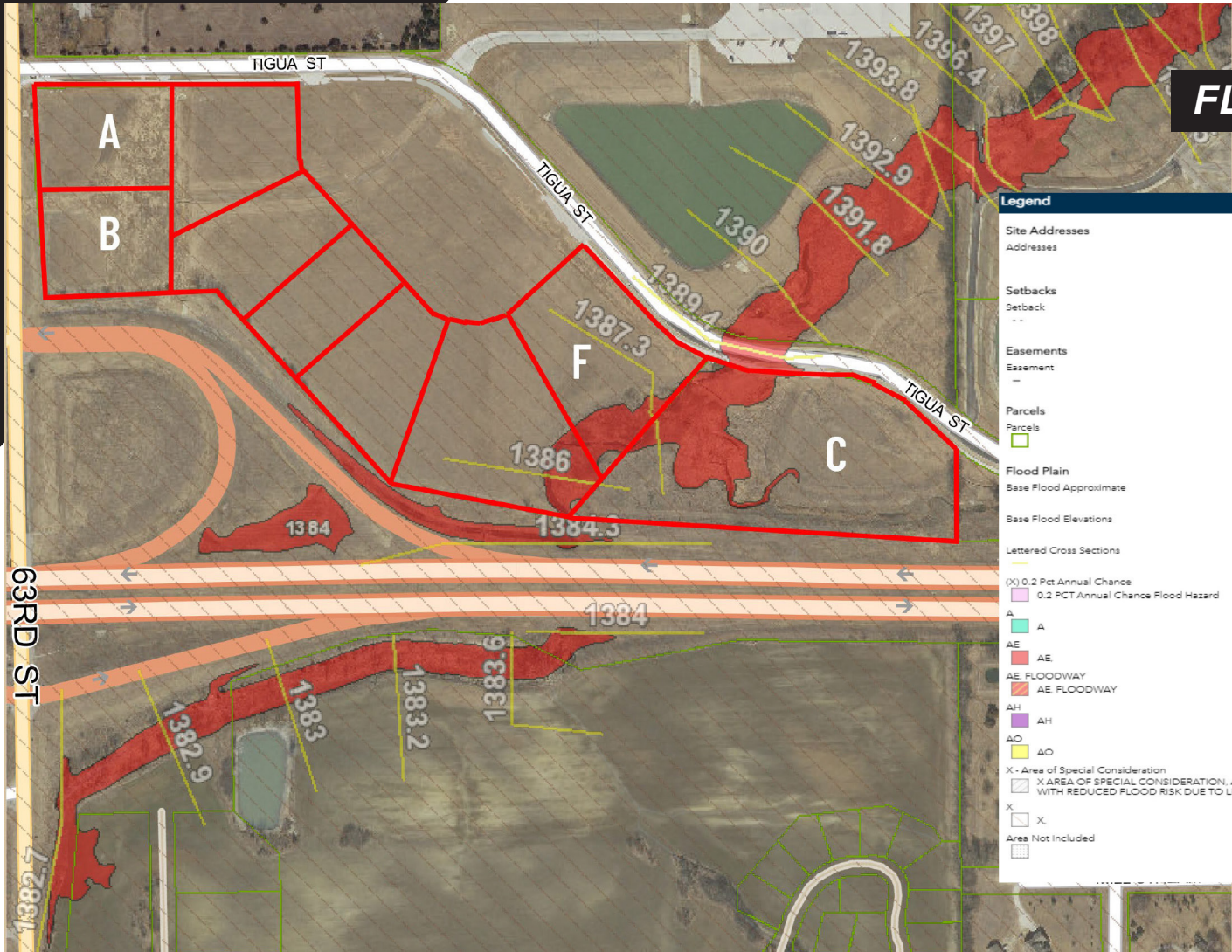


TIDEMANN
REAL ESTATE

FOR SALE

DEVELOPMENT LAND

Woodlawn and K-254, NE/c, Kechi, KS 67067



FLOOD PLAIN MAP

All information furnished regarding property for sale, lease, exchange or financing is from sources deemed reliable but no guarantee is made or responsibility assumed as to its accuracy or completeness and you are advised to make your own analysis and verification. Agent hereby notifies prospective buyer/lessee that (a) Agent will be acting as a designated agent of seller/lessor with the duty to represent seller/lessor's interest; and (b) Information given to Agent will be disclosed to seller/lessor.



ReeceNichols
SOUTH CENTRAL KANSAS
An Independently Owned and Operated Member of the Reece & Nichols Alliance, Inc.

Offered Exclusively By:

BRADLEY TIDEMANN, SIOR
316-650-8853 | bradley@tidemannre.com