

AUCTION

15700 E 119th St, Mulvane, KS 67110

Online Bidding Only - Ends Friday, June 20th @ 12:00pm



CUSTOM HOME ON 39.37 ± ACRES
6,000 SF SHOP W/ OVERHEAD DOORS- POOL
BLACK TOP ROAD ACCESS - MULVANE SCHOOLS



ReeceNichols
SOUTH CENTRAL KANSAS
An Independently Owned and Operated Member of ReeceNichols Alliance

R | S RUPP | STEVEN
ReeceNichols South Central Kansas

Jake Steven, ALC

316.708.5960

jake@reecenichols.com

John Rupp, ALC

316.250.5198

johnrupp@reecenichols.com

Reese Bayliff

316.258.6062

rbayliff@reecenichols.com

Sue Wenger

316.204.6648

suewenger@reecenichols.com



RUPP|STEVEN

ReeceNichols South Central Kansas

AUCTION

15700 E 119th St, Mulvane, KS 67110

Online Bidding Only - Ends Friday, June 20th @ 12:00pm

**CUSTOM HOME ON 39.37 ± ACRES
6,000 SF SHOP W/ OVERHEAD DOORS- POOL
BLACK TOP ROAD ACCESS - MULVANE SCHOOLS**



Register to Bid: www.ReeceNicholsAuction.com

PROPERTY DETAILS

Total Acreage: 39.37 ± Acres

Zoning: Rural Residential

School District: USD 263 - Mulvane

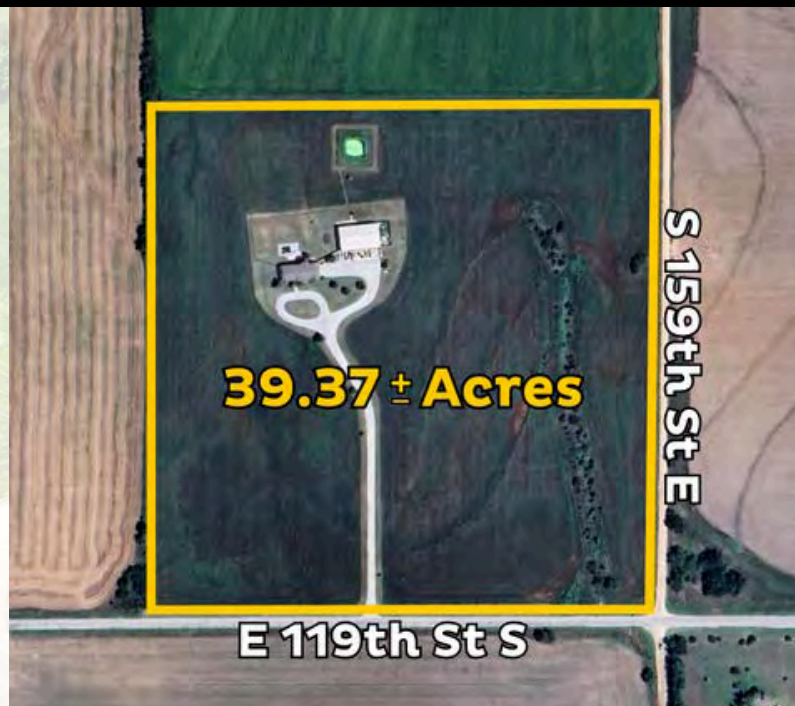
2024 Property Taxes:

General: \$8,078.87

Specials: \$5.00

Utilities:

- Private Lagoon
- Sedgwick County Rural Water District #3
- Leased Propane Tank (Wayman Oil)
- Private Well for Irrigation
 - Well Pump is not currently working
- Alert 360 Security System



ReeceNichols
SOUTH CENTRAL KANSAS
An Independently Owned and Operated Member of ReeceNichols Alliance

Jake Steven, ALC
316.708.5960
jake@reecenichols.com

John Rupp, ALC
316.250.5198
johnrupp@reecenichols.com

Reese Bayliff
316.258.6062
rbayliff@reecenichols.com

Sue Wenger
316.204.6648
suewenger@reecenichols.com

Online Bidding Only - Ends Friday, June 20th @ 12:00pm

Register to Bid: www.ReeceNicholsAuction.com



HOME DETAILS:

Total Living Area: 4,076 +/- SF

- Above-Ground Living Space: 2,453 ± SF
- Basement: 2,423 ± SF
 - (1,623 +/- Finished SF)

Bedrooms: 4

Bathrooms: 3 Full | 1 Half

Garage: Oversized 6 Car Attached

Year Built: 2002

Home Features:

- Large wet bar and entertaining area in the basement
- Chlorine Pool with Automatic Cover
- Please note the pool cover motor was rebuilt and needs to be installed
- Pool liner replaced in 2023 by Ultra Modern
- 1 Gas Fireplace
- Main floor laundry



Online Bidding Only - Ends Friday, June 20th @ 12:00pm



AUCTION

15700 E 119th St, Mulvane, KS 67110

Online Bidding Only - Ends Friday, June 20th @ 12:00pm

Register to Bid: www.ReeceNicholsAuction.com



ReeceNichols
 SOUTH CENTRAL KANSAS
An Independently Owned and Operated Member of ReeceNichols Alliance

Jake Steven, ALC
 316.708.5960
jake@reecenichols.com

John Rupp, ALC
 316.250.5198
johnrupp@reecenichols.com

Reese Bayliff
 316.258.6062
rbayliff@reecenichols.com

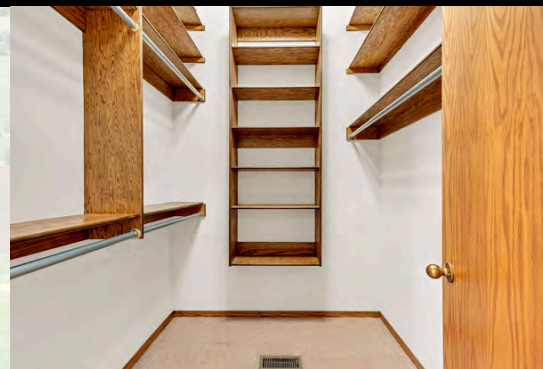
Sue Wenger
 316.204.6648
suewenger@reecenichols.com

AUCTION

15700 E 119th St, Mulvane, KS 67110

Online Bidding Only - Ends Friday, June 20th @ 12:00pm

Register to Bid: www.ReeceNicholsAuction.com



ReeceNichols
 SOUTH CENTRAL KANSAS
 An Independently Owned and Operated Member of ReeceNichols Alliance

Jake Steven, ALC
 316.708.5960
jake@reecenichols.com

John Rupp, ALC
 316.250.5198
johnrupp@reecenichols.com

Reese Bayliff
 316.258.6062
rbayliff@reecenichols.com

Sue Wenger
 316.204.6648
suewenger@reecenichols.com

Online Bidding Only - Ends Friday, June 20th @ 12:00pm

Register to Bid: www.ReeceNicholsAuction.com

SHOP DETAILS

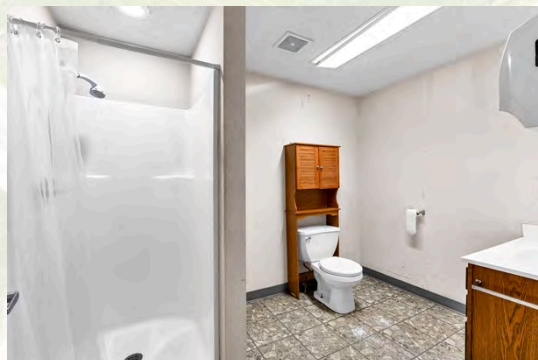
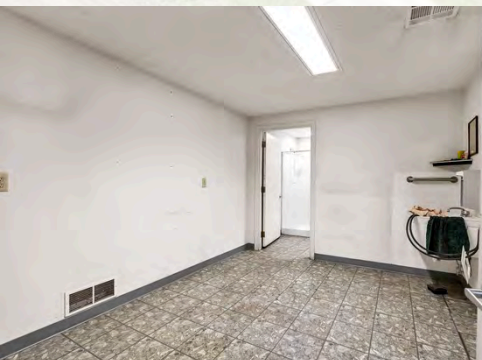
Total Barn Size: 6,000 ± SF (100' x 60')

- Main Shop Area (60' x 60')
- Overhead propane heaters
- 60'x40' Climate Controlled Area
- LED Lights recently installed throughout the shop for better light and increased efficiency
- Wired for internet

Overhead Doors: 4 powered roll up doors(14'x12')

Climate Controlled Area:

- 40'x20' Loft area for Storage
- Full HVAC System in place
- 20'x20' Office
 - Tile Floors
 - Built in Cabinets w/ Display Upper Cabinets
- Full bathroom





RUPP|STEVEN

ReeceNichols South Central Kansas

AUCTION

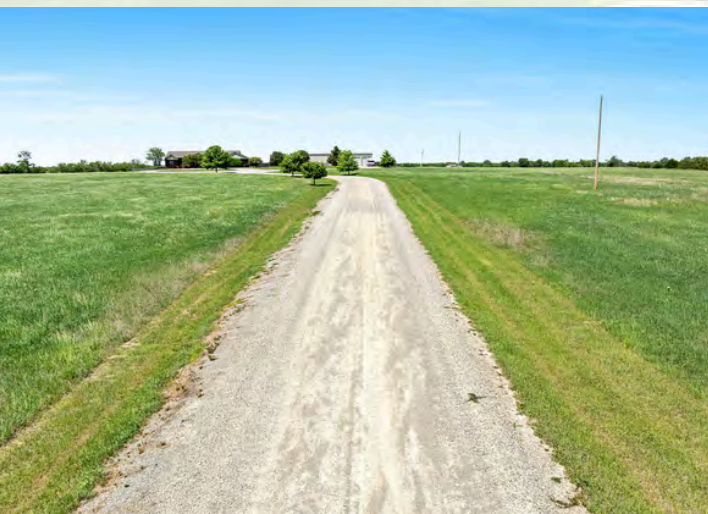
15700 E 119th St, Mulvane, KS 67110

Online Bidding Only - Ends Friday, June 20th @ 12:00pm

Register to Bid: www.ReeceNicholsAuction.com

LAND HIGHLIGHTS

- 39.37 ± Acres of rolling pasture
- Well kept gravel drive w/ concrete approaches at the house and shop
- 0.57 ± Acre Fenced Backyard area around the pool



ReeceNichols
SOUTH CENTRAL KANSAS
An Independently Owned and Operated Member of ReeceNichols Alliance

Jake Steven, ALC
316.708.5960
jake@reecenichols.com

John Rupp, ALC
316.250.5198
johnrupp@reecenichols.com

Reese Bayliff
316.258.6062
rbayliff@reecenichols.com

Sue Wenger
316.204.6648
suewenger@reecenichols.com



RUPP|STEVEN

ReeceNichols South Central Kansas

AUCTION

15700 E 119th St, Mulvane, KS 67110

Online Bidding Only - Ends Friday, June 20th @ 12:00pm

**CUSTOM HOME ON 39.37 ± ACRES
6,000 SF SHOP W/ OVERHEAD DOORS- POOL
BLACK TOP ROAD ACCESS - MULVANE SCHOOLS**



Register to Bid: www.ReeceNicholsAuction.com

Terms: Buyers are advised to thoroughly review the terms and details provided on the online bidding site, as any terms, comments, or announcements made there supersede any other advertised material. The property is being sold in its current "Where Is, As Is" condition, without any warranties. Sale is subject to seller confirmation with closing within 30 days. The successful bidder must immediately execute the provided auction purchase contract and deposit \$50,000.00 as earnest money within the specified time outlined in the contract. Additionally, a 10% buyer's premium will be added to the final bid price. This auction is conducted exclusively online, with a 2-minute bidding time extension. The auctioneer reserves the right to recess, adjust and/or extend the bidding time as they deem necessary. Furthermore, the auctioneer may, at their sole discretion, reject, disqualify, or refuse any bid. Broker forms, if any, are available on the bidding site. While all information is deemed reliable, buyers are encouraged to conduct their own due diligence. The sale is not contingent on financing, appraisal, or inspection, and the winning bidder must be available immediately post-auction. The property is sold subject to applicable Federal, State, and/or Local Government regulations, with all measurements and details approximate and non-binding. The auctioneer provides no warranties regarding the online bidding platform's performance and assumes no liability for any bidder-incurred damages during its use, including unacknowledged bids or errors. Bidders accept all risks associated with the platform and acknowledge that the auctioneer bears no responsibility for bid submission or acceptance errors or omissions. Auctions may be subject to selling prior to the auction date.



ReeceNichols
SOUTH CENTRAL KANSAS
An Independently Owned and Operated Member of ReeceNichols Alliance

Jake Steven, ALC
316.708.5960
jake@reecenichols.com

John Rupp, ALC
316.250.5198
johnrupp@reecenichols.com

Reese Bayliff
316.258.6062
rbayliff@reecenichols.com

Sue Wenger
316.204.6648
suewenger@reecenichols.com