



ReeceNichols
SOUTH CENTRAL KANSAS
An Independently Owned and Operated Member of the Reece & Nichols Alliance, Inc.

K-254 & WOODLAWN DEVELOPMENT LAND FOR SALE

K-254 AND WOODLAWN AVE., KECHI, KS 67067



SALE PRICE: \$600,000.00
SITE SF: 215,673 SF
SITE ACRES: 4.95 ACRES
2024 TAXES: GENERAL: \$1,044.97

PROPERTY HIGHLIGHTS

- 4.95 Acre Development land For Sale at K-254 & Woodlawn.
- Highway Visibility.
- Zoned C-3 General Commercial District.

DEMOGRAPHICS

	1 MILE	3 MILES	5 MILES
Population	1,015	19,785	46,217
Avg. HH Income	\$114,368	\$118,392	\$106,929
Median Age	33.9	37.7	35.7

TRAFFIC COUNTS

Woodlawn & K-254 5,932 VPD

Offered Exclusively By:

Ben Suellentrop
316-765-5145 • bens@reecenichols.com

Morrie Sheets
316-644.5917 • morries@reecenichols.com

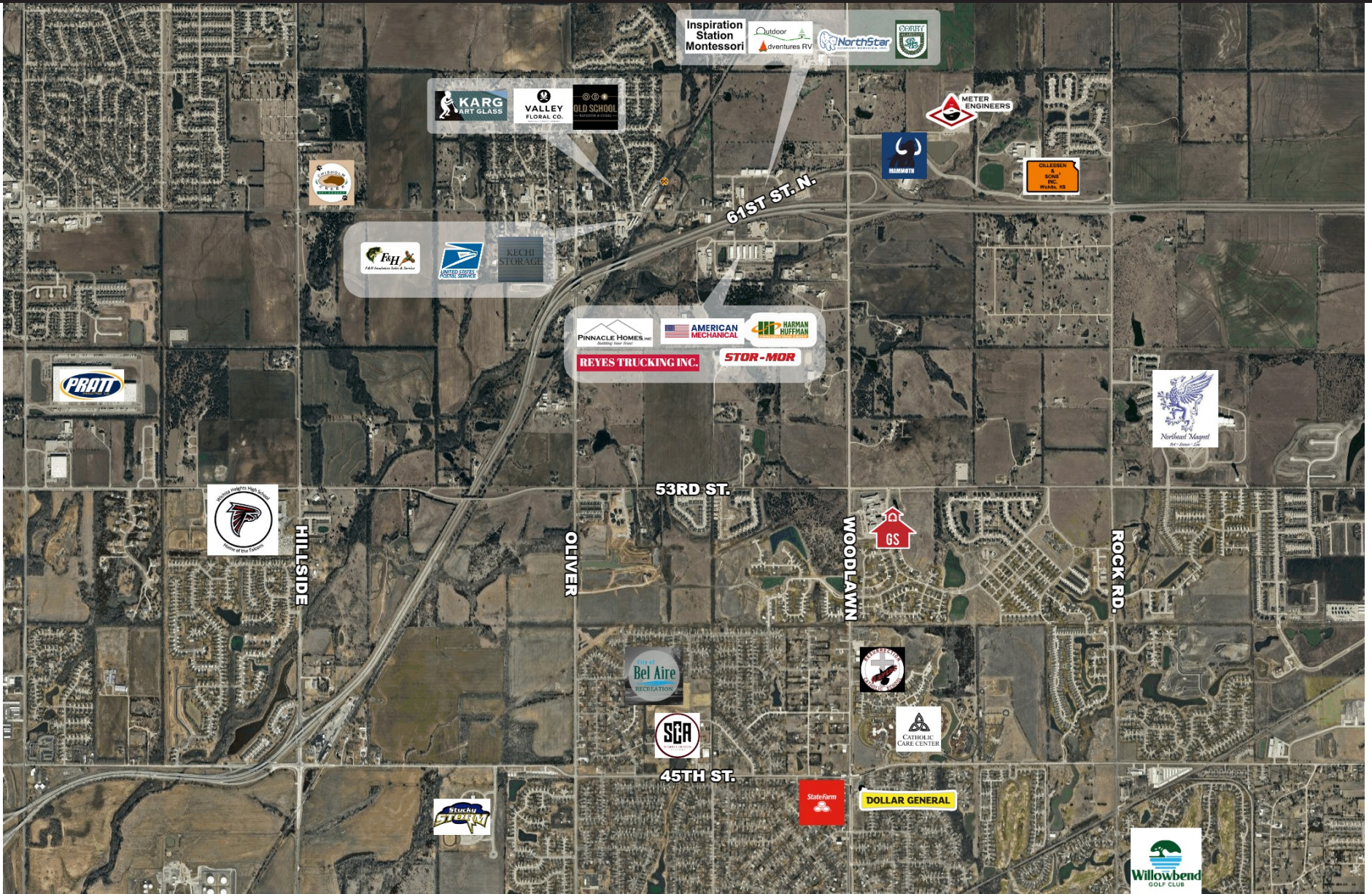


ReeceNichols
SOUTH CENTRAL KANSAS

An Independently Owned and Operated Member of the Reece & Nichols Alliance, Inc.

K-254 & WOODLAWN DEVELOPMENT LAND FOR SALE

K-254 AND WOODLAWN AVE., KECHI, KS 67067



Offered Exclusively By:

Ben Suellentrop

316-765-5145 • bens@reecenichols.com

Morrie Sheets

316-644.5917 • morries@reecenichols.com