

PRIME RESTAURANT SPACES

124 S BROADWAY, WICHITA, KS 67202



EXCLUSIVELY OFFERED BY:

ALEX IBARRA, CCIM
316.833.1198 | ALEXIBARRA@REECENICHOLS.COM



ReeceNichols
SOUTH CENTRAL KANSAS

An Independently Owned and Operated Member of the Reece & Nichols Alliance, Inc.



FORMER JINYA RAMEN

124 S BROADWAY, SUITE 101
WICHITA, KS 67202

LEASE RATE:
CONTACT BROKER

GROSS BLDG SF:	42,448 SF
VACANT SF:	2,694 SF
LEASE TYPE:	NNN
YEAR BUILT:	1950, Renovated 2021
ZONING:	Central Business District
PARKING:	Street and Parking Garage

PROPERTY HIGHLIGHTS:

- Turnkey restaurant space available for lease in Downtown Wichita.
- Directly across the street from the under-construction Wichita Biomedical Campus.
- Additional storage space in the basement.
- Excellent visibility from Broadway and William Streets.
- Signage opportunity on William Street.

DEMOGRAPHICS

	1 Mile	3 Miles	5 Miles
Population	11,315	110,612	230,599
Avg. HH Income	\$56,859	\$63,075	\$69,678
Median Age	32.5	33.4	33.5

TRAFFIC COUNTS

Broadway & William 10,753 VPD



SCAN FOR
VIDEO!



ReeceNichols
SOUTH CENTRAL KANSAS

An Independently Owned and Operated Member of the Reece & Nichols Alliance, Inc.

EXCLUSIVELY OFFERED BY:

ALEX IBARRA, CCIM
316.833.1198 | ALEXIBARRA@REECENICHOLS.COM



ReeceNichols
SOUTH CENTRAL KANSAS

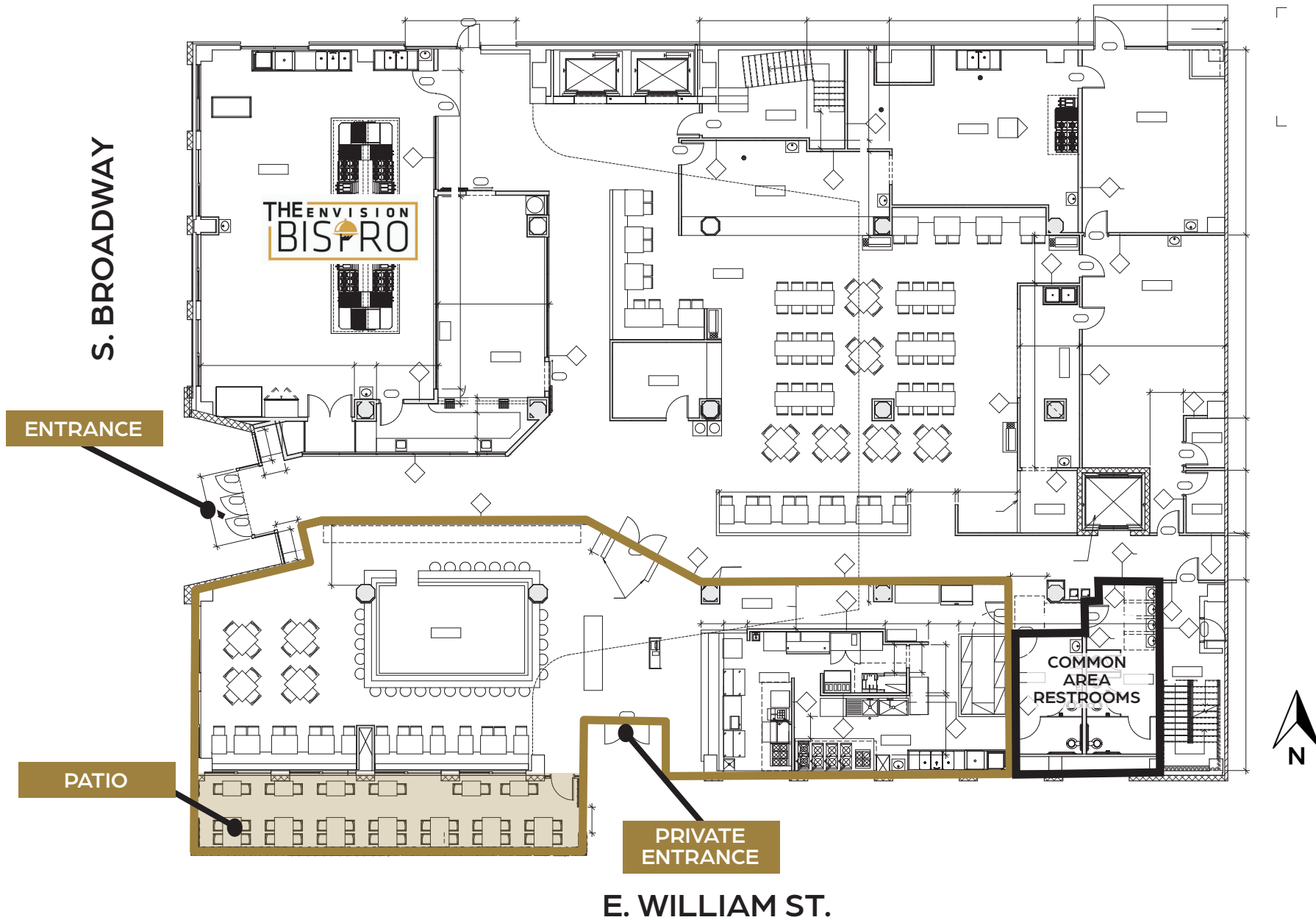
An Independently Owned and Operated Member of the Reece & Nichols Alliance, Inc.

EXCLUSIVELY OFFERED BY:

ALEX IBARRA, CCIM

316.833.1198 | ALEXIBARRA@REECENICHOLS.COM

FLOOR PLAN



ReeceNichols
SOUTH CENTRAL KANSAS

An Independently Owned and Operated Member of the Reece & Nichols Alliance, Inc.

EXCLUSIVELY OFFERED BY:

ALEX IBARRA, CCIM

316.833.1198 | ALEXIBARRA@REECENICHOLS.COM



FOOD HALL KIOSKS

124 S BROADWAY
WICHITA, KS 67202

**LEASE RATE:
CONTACT BROKER**

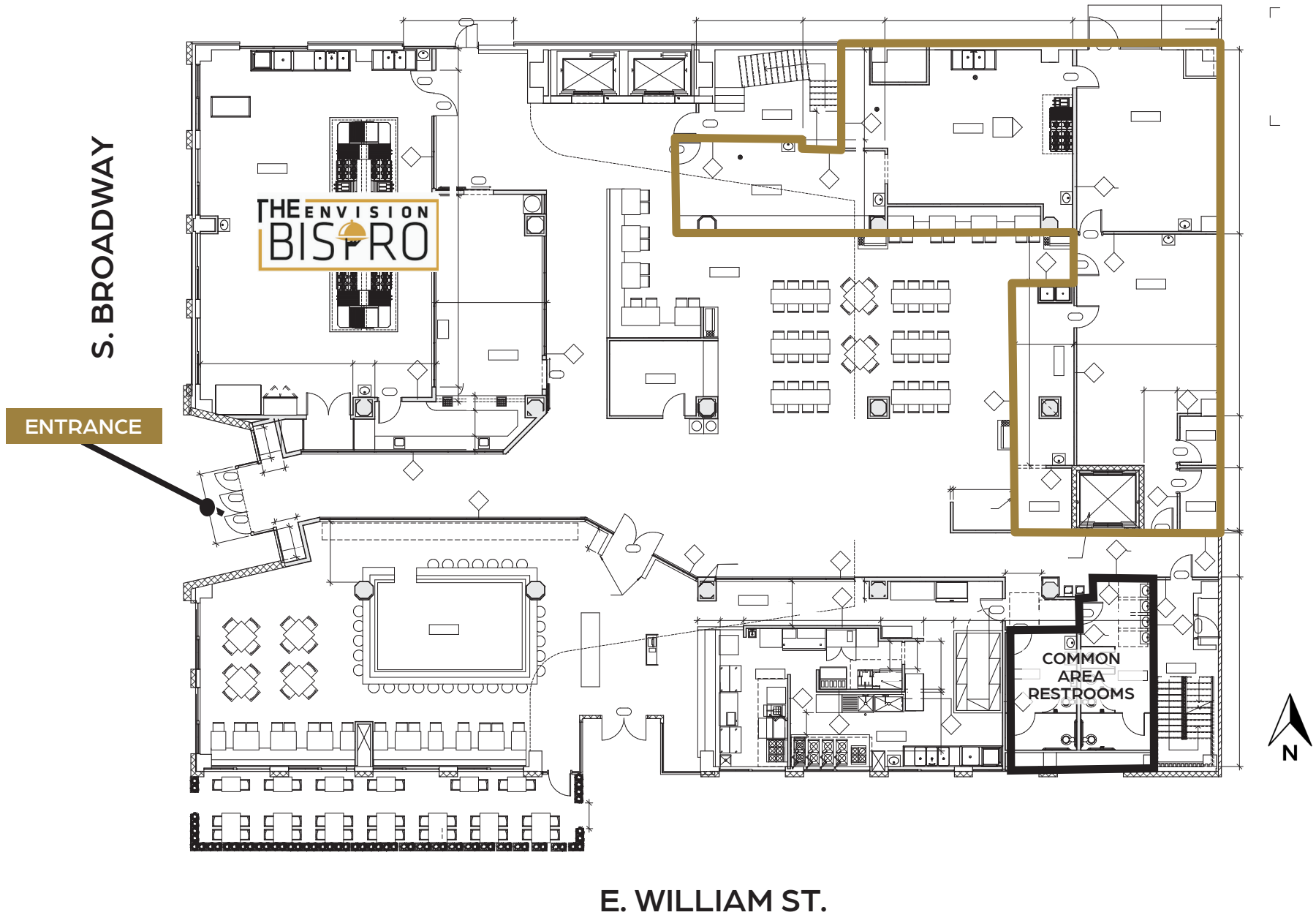
GROSS BLDG SF:	42,448 SF
NUMBER OF KIOSKS:	4
LEASE TYPE:	NNN
YEAR BUILT:	1950, Renovated 2021
ZONING:	Central Business District
PARKING:	Street and Parking Garage

PROPERTY HIGHLIGHTS:

- Restaurant kiosks / food hall for lease in Downtown Wichita.
- Ideal opportunity for a food hall operator to run multiple kiosks.
- New state-of-the-art kitchen equipment.
- Signage opportunities at each kiosks.

DEMOGRAPHICS	1 Mile	3 Miles	5 Miles
Population	11,315	110,612	230,599
Avg. HH Income	\$56,859	\$63,075	\$69,678
Median Age	32.5	33.4	33.5
TRAFFIC COUNTS			
William and Market	3,312 VPD		

FLOOR PLAN



ReeceNichols
SOUTH CENTRAL KANSAS

An Independently Owned and Operated Member of the Reece & Nichols Alliance, Inc.

EXCLUSIVELY OFFERED BY:

ALEX IBARRA, CCIM

316.833.1198 | ALEXIBARRA@REECENICHOLS.COM



ReeceNichols
SOUTH CENTRAL KANSAS

An Independently Owned and Operated Member of the Reece & Nichols Alliance, Inc.

EXCLUSIVELY OFFERED BY:

ALEX IBARRA, CCIM

316.833.1198 | ALEXIBARRA@REECENICHOLS.COM

WICHITA BIOMEDICAL CAMPUS



ABOUT

- Wichita State University, WSU Tech and the University of Kansas have broken ground on the Wichita Biomedical CampusSM, an approximately 471,000-square-foot, \$300 million health sciences facility located in the heart of downtown Wichita.
- The 471,000-square-foot building will be comprised of shared spaces for advanced laboratories, clinical research and technology. The high-tech facility will draw students, educators and researchers from around the country – attracting talent and resources to the Wichita area and boosting the economic success of Kansas.
- Initially, about **3,000 students and 200 faculty and staff** will be housed at the center with opportunities for growth in existing and new programs.
- **Estimated completion: Q4-2026. Classes start: Q2-2027.**



ReeceNichols
SOUTH CENTRAL KANSAS

An Independently Owned and Operated Member of the Reece & Nichols Alliance, Inc.

EXCLUSIVELY OFFERED BY:

ALEX IBARRA, CCIM

316.833.1198 | ALEXIBARRA@REECENICHOLS.COM

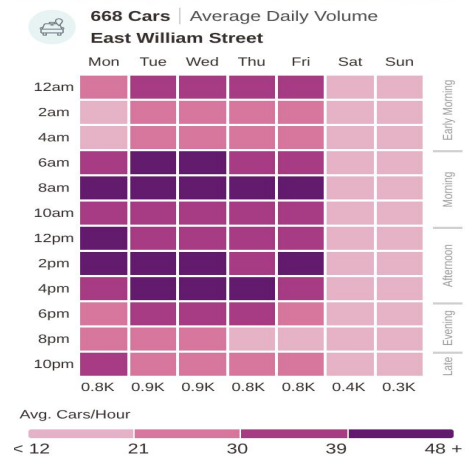
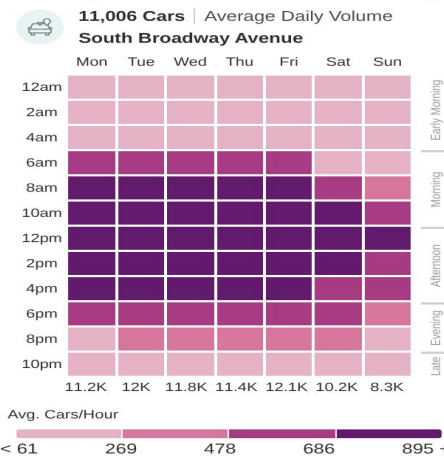
ABOUT THE NEIGHBORHOOD



ABOUT DOWNTOWN

\$2 BILLION TOTAL INVESTMENT (SINCE 2010)	3,000 UNITS TOTAL RESIDENTIAL UNITS
1,279 ROOMS HOTEL ROOMS	658,000-825,000 SF PROJECTED CLASS -A OFFICE SPACE (THROUGH 2030)
50 MAJOR MUSEUMS AND ART GALLERIES	10 MINUTES FROM EISENHOWER NATIONAL AIRPORT

TRAFFIC PATTERNS



*INFORMATION PULLED FROM DOWNTOWN WICHITA AND GREATER WICHITA PARTNERSHIP

DOWNTOWN DEVELOPMENT PROJECTS



ReeceNichols
SOUTH CENTRAL KANSAS

An Independently Owned and Operated Member of the Reece & Nichols Alliance, Inc.

EXCLUSIVELY OFFERED BY:

ALEX IBARRA, CCIM

316.833.1198 | ALEXIBARRA@REECENICHOLS.COM



ReeceNichols
SOUTH CENTRAL KANSAS
An Independently Owned and Operated Member of the Reece & Nichols Alliance, Inc.

EXCLUSIVELY OFFERED BY:

ALEX IBARRA, CCIM
316.833.1198 | ALEXIBARRA@REECENICHOLS.COM