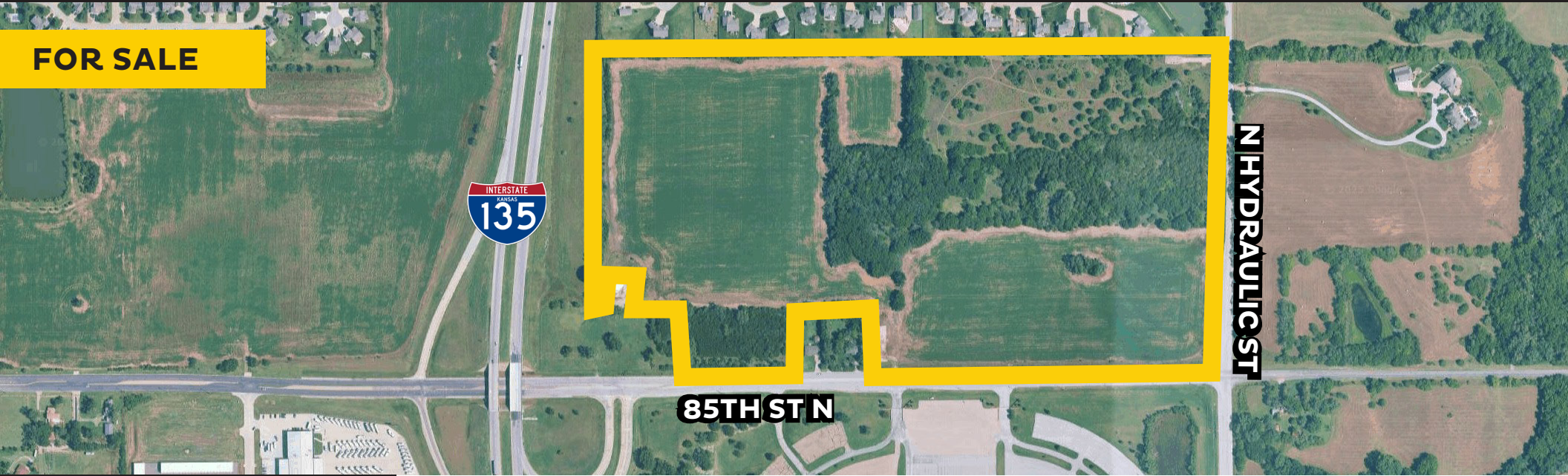


PARK CITY DEVELOPMENT LAND

85TH & HYDRAULIC, PARK CITY, KS 67147

FOR SALE



SALE PRICE: \$2.00/SF

SITE ACRES: 72.93 Acres
ZONING: C-2
2025 TAXES: Generals: \$389.10

PROPERTY HIGHLIGHTS

- Land can be divided.
- Utilities close to site.
- Close proximity to I-135.
- Join area users such as NIAR, Wichita State University, Park City Arena, Blue Compass RV.

DEMOGRAPHICS

	1 Mile	3 Miles	5 Miles
Population	687	12,118	24,307
Avg. HH Income	\$150,652	\$99,822	\$105,511
Median Age	38.5	35.5	37.4

DRIVETIME

Highway I-135	Approx. 1 Minute	Approx. 0.3 Miles
Highway 254	Approx. 7 Minutes	Approx. 5.9 Miles
Highway K-96	Approx. 8 Minutes	Approx. 7.8 Miles



ReeceNichols
 SOUTH CENTRAL KANSAS

An Independently Owned and Operated Member of the Reece & Nichols Alliance, Inc.

Offered By:

Joel Morris, ALC | 316-706-9587 | joelm@reecenichols.com
Ben Suellentrop | 316-765-5145 | bens@reecenichols.com
Morrie Sheets | 316-644-5917 | morries@reecenichols.com
Justin Robelli | 316-461-6334 | robelli@reecenichols.com

PARK CITY DEVELOPMENT LAND

85TH & HYDRAULIC, PARK CITY, KS 67147

FOR SALE



ReeceNichols
SOUTH CENTRAL KANSAS

An Independently Owned and Operated Member of the Reece & Nichols Alliance, Inc.

Offered By:

Joel Morris, ALC	316-706-9587	joelm@reecenichols.com
Ben Suellentrop	316-765-5145	bens@reecenichols.com
Morrie Sheets	316-644-5917	morries@reecenichols.com
Justin Robelli	316-461-6334	robelli@reecenichols.com