

ANDOVER ROAD DEVELOPMENT LAND

330 S. ANDOVER ROAD, ANDOVER, KS 67002

FOR LEASE



LEASE RATE:

Contact Broker

SITE SF:

40,000 SF

ZONING:

Urban District

PROPERTY HIGHLIGHTS

- Prime development land available for ground lease.
- Located next to a new Casey's convenience store.
- Situated along commercial growth near U.S.-54/ Kellogg and Andover Road.

DEMOGRAPHICS

	1 Mile	3 Miles	5 Miles
Population	7,050	24,673	51,137
Avg. HH Income	\$125,815	\$154,911	\$161,128
Median Age	35.4	39.6	38.3

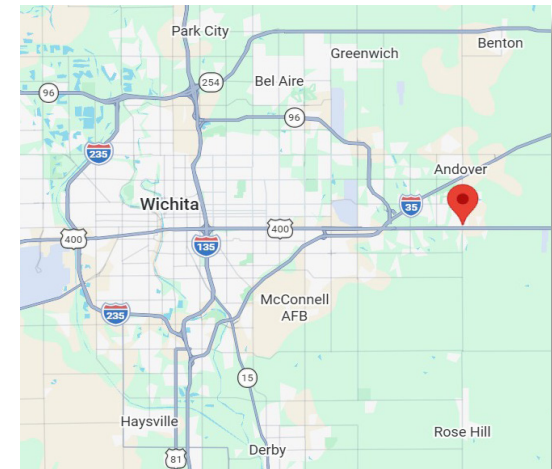
TRAFFIC COUNTS

US-54 & Andover Rd. 36,040 VPD

NEARBY BUSINESSES INCLUDE:



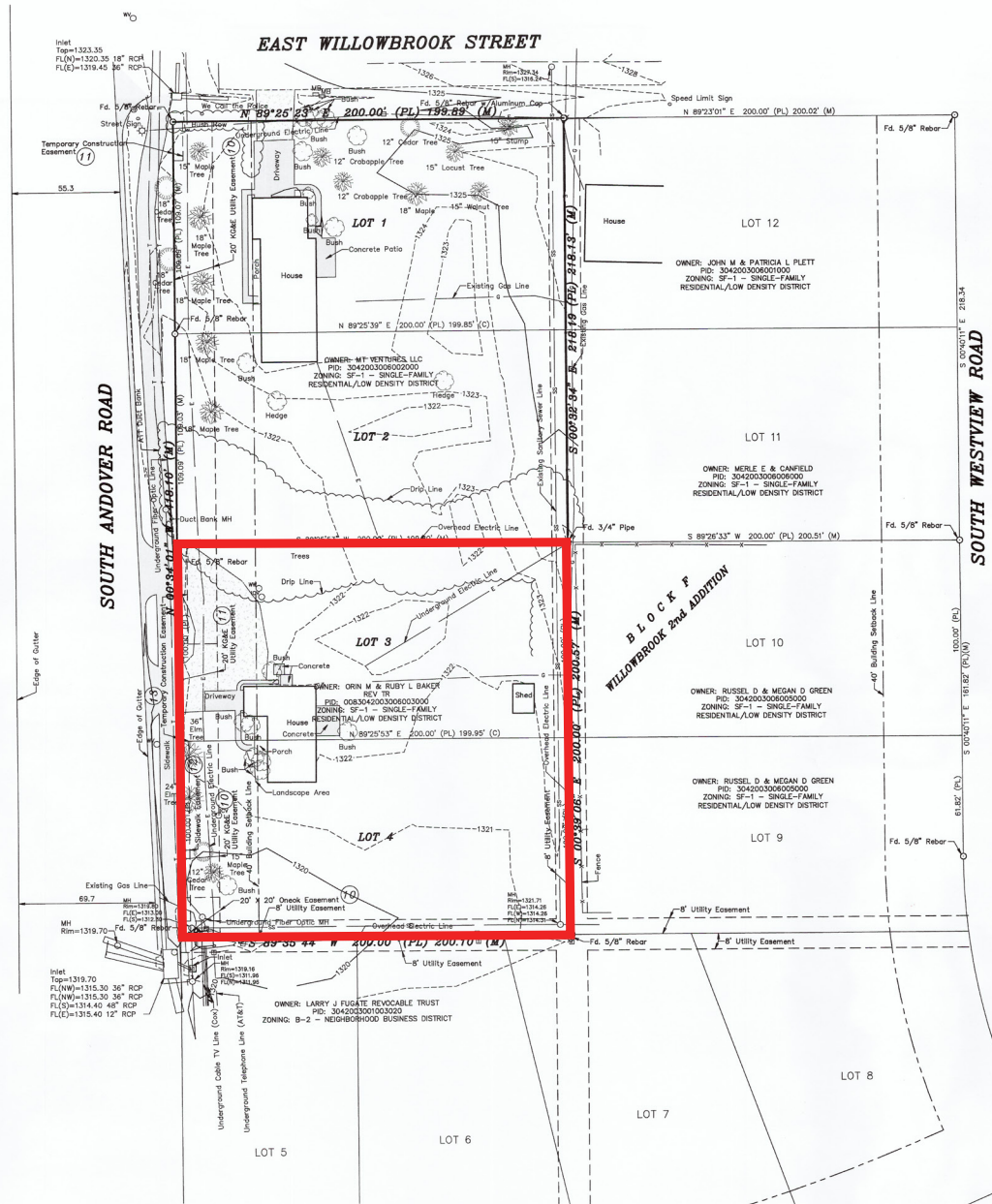
& many more!



ANDOVER ROAD DEVELOPMENT LAND

330 S. ANDOVER ROAD, ANDOVER, KS 67002

ALTA SURVEY



ANDOVER ROAD DEVELOPMENT LAND

330 S. ANDOVER ROAD, ANDOVER, KS 67002

AERIAL



SITE

Skylofts at the Heritage

400

400

ANDOVER ROAD

ANDOVER ROAD