

61ST ST. INDUSTRIAL

200 W. 61st St. N., Park City, KS 67204

FOR LEASE



LEASE RATE: CONTACT BROKER

SITE SIZE
187,150 SF
(4.3 A)

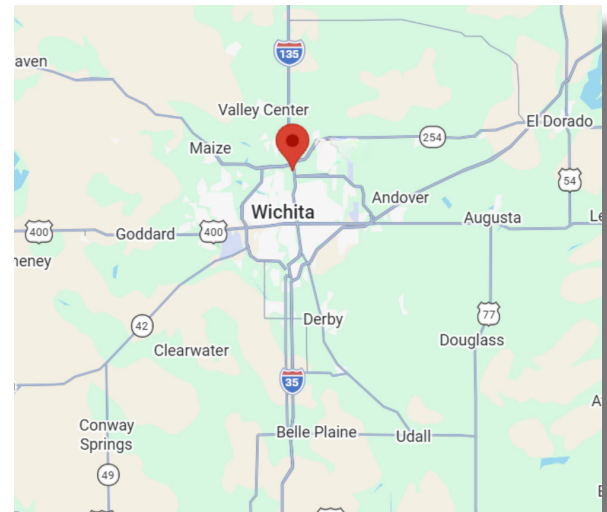
BUILDING SIZE
29,000 ± SF

TOTAL AVAILABLE
19,959 SF, Divisible
Office: 5,705 SF
Warehouse: 14,254 SF

TI DOLLARS
Available for qualified tenants

MIN. SF AVAILABLE
1,324 SF

MAX. CONTIGUOUS SF
19,959 SF



OCCUPIED SF:
9,041 SF

OVERHEAD DOORS
8

ZONING
I-1

PARKING
30+

YEAR BUILT
1978, 2004

2025 TAXES (\$0.85/SF)
Generals: \$24,716.30
Specials: \$60.00

CEILING HEIGHT
14' Clear

HIGHLIGHTS

- Office/warehouse space available for lease in Park City.
- Multiple configurations to meet space requirements.
- Heated warehouse - 14,254 ± SF
- Fenced outdoor storage.
- Pole signage.
- Excellent proximity to I-135 (1/2 mile).

61ST ST. INDUSTRIAL

200 W. 61st St. N., Park City, KS 67204

FOR LEASE



INTERIOR PHOTOS



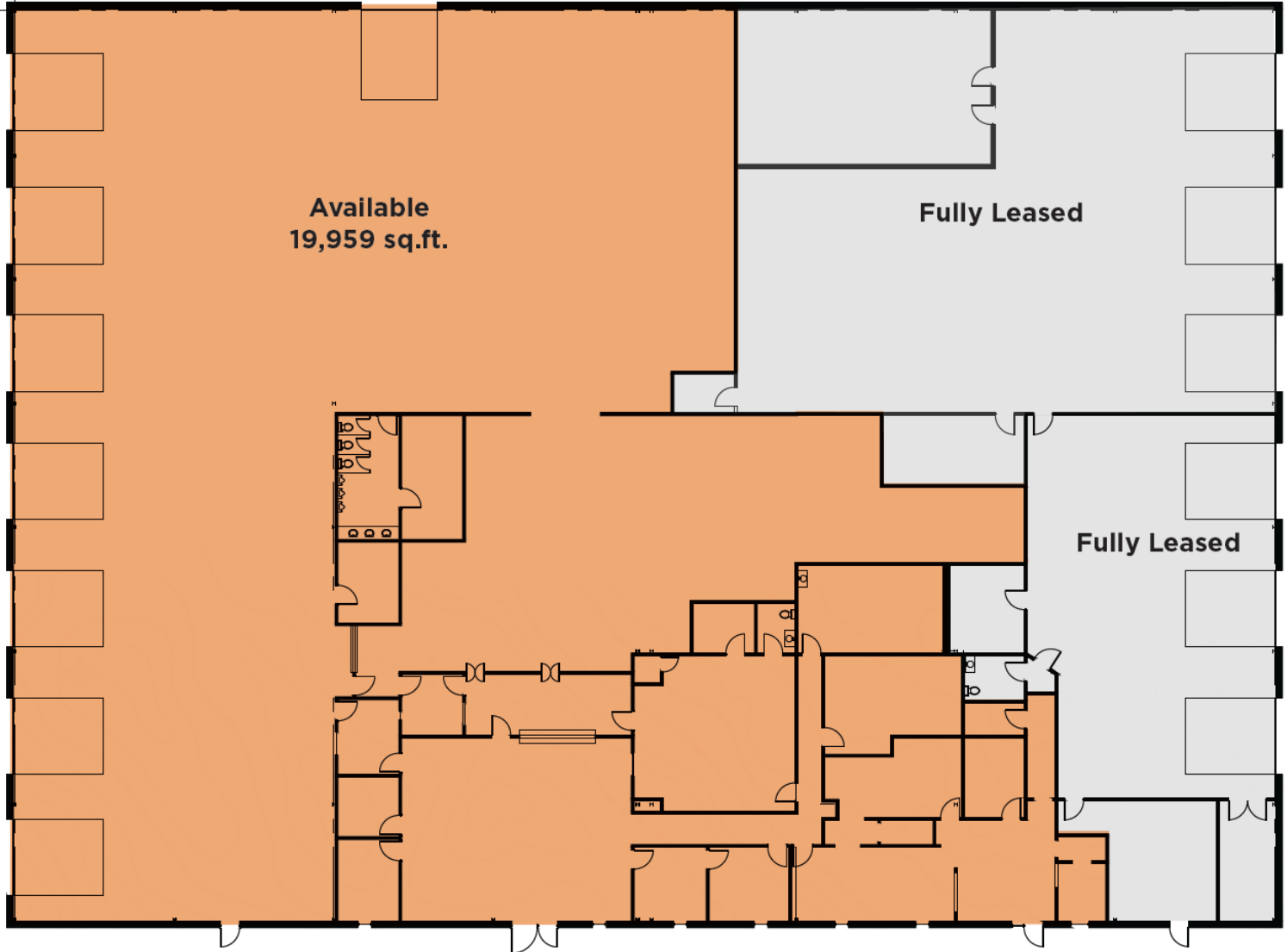
61ST ST. INDUSTRIAL

200 W. 61st St. N., Park City, KS 67204

FOR LEASE



FLOOR PLAN



61ST ST. INDUSTRIAL

200 W. 61st St. N., Park City, KS 67204

FOR LEASE



AERIAL

DEMOGRAPHICS

	3 MILES	5 MILES
Population	18,826	51,581
Avg. HH Income	\$107,765	\$98,985
Median Age	38.1	36.0

TRAFFIC COUNTS

N. Broadway & W. 61st	9,709 VPD
I-135 & 61st St.	51,007 VPD

