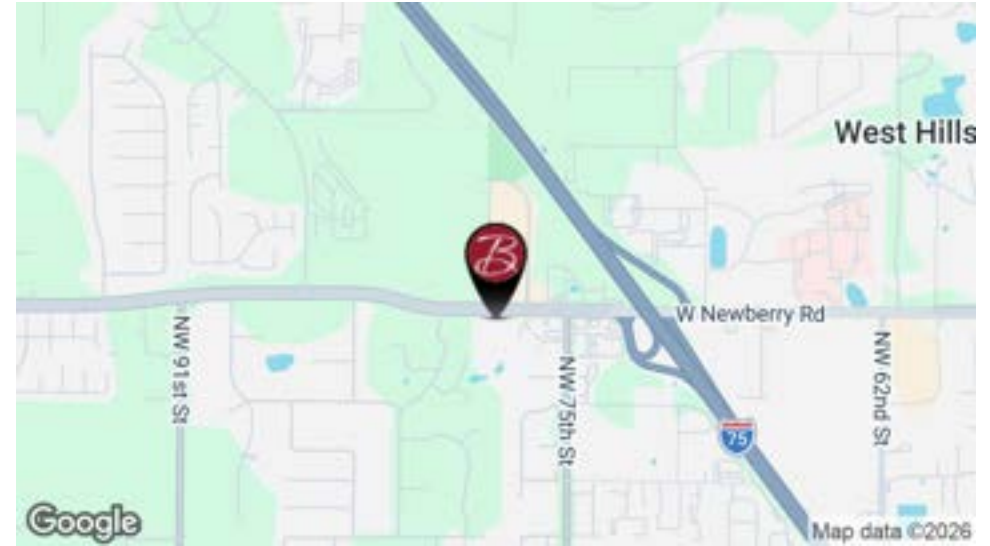


PROFESSIONAL / MEDICAL OFFICE | NEWBERRY RD

EXECUTIVE SUMMARY

7731 West Newberry Road | Gainesville, FL 32607



OFFERING SUMMARY

Lease Rate:	\$16.00 SF/yr (NNN)
Total Building Size:	5,406 SF
Unit Size:	1,770
Lot Size:	0.32 Acres
Number of Units:	1
Zoning:	BP
AADT:	32,500

PROPERTY OVERVIEW

Located along W Newberry Road, one of Gainesville's most active commercial corridors, offering strong visibility and consistent daily traffic. Surrounded by national retailers, established businesses, and dense residential growth, the site benefits from a highly active trade area and convenient access to Interstate 75. The property is well-suited for a variety of professional, medical, or service-based users, with flexibility for low-intensity retail depending on use. Its layout and accessibility make it ideal for businesses seeking a strong presence in a high-demand corridor.

PROPERTY HIGHLIGHTS

- Monument signage available for strong visibility
- Ample on-site parking for staff and clients
- Prime frontage on W Newberry Road with high traffic counts
- Located along a major commuter corridor
- Strong daytime population and consumer traffic

FOR MORE INFORMATION:



Eric Ligman
Director
352.256.2112
ericligman@bosshardtrealty.com



Makayla Richardson
Commercial Associate
352.256.7532
makayla@bosshardtrealty.com



BOSSHARDT
— REALTY SERVICES —
COMMERCIAL & LAND DIVISION

PROFESSIONAL / MEDICAL OFFICE | NEWBERRY RD

EXTERIOR PHOTOS

7731 West Newberry Road | Gainesville, FL 32607



FOR MORE INFORMATION:



Eric Ligman
Director
352.256.2112
ericligman@bosshardtrealty.com



Makayla Richardson
Commercial Associate
352.256.7532
makayla@bosshardtrealty.com

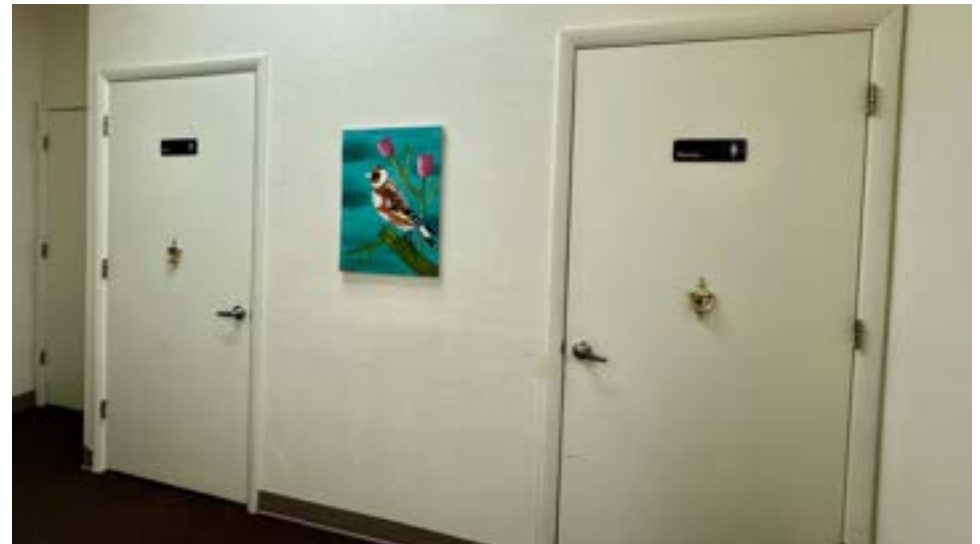


BOSSHARDT
— REALTY SERVICES —
COMMERCIAL & LAND DIVISION

PROFESSIONAL / MEDICAL OFFICE | NEWBERRY RD

INTERIOR PHOTOS

7731 West Newberry Road | Gainesville, FL 32607



FOR MORE INFORMATION:



Eric Ligman
Director
352.256.2112
ericligman@bosshardtrealty.com



Makayla Richardson
Commercial Associate
352.256.7532
makayla@bosshardtrealty.com



BOSSHARDT
— REALTY SERVICES —
COMMERCIAL & LAND DIVISION

PROFESSIONAL / MEDICAL OFFICE | NEWBERRY RD

INTERIOR PHOTOS

7731 West Newberry Road | Gainesville, FL 32607



FOR MORE INFORMATION:



Eric Ligman
Director
352.256.2112
ericligman@bosshardtrealty.com



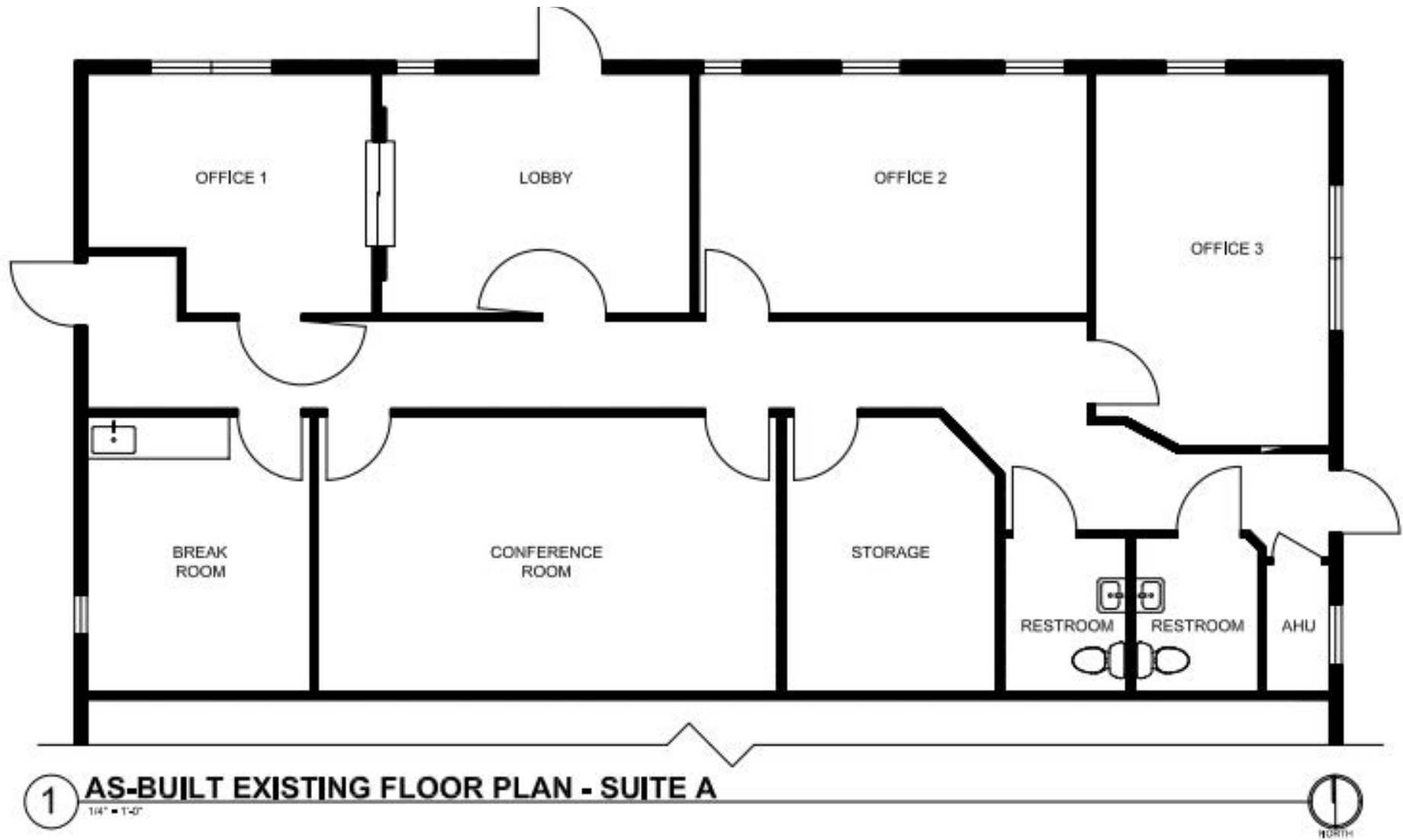
Makayla Richardson
Commercial Associate
352.256.7532
makayla@bosshardtrealty.com



PROFESSIONAL / MEDICAL OFFICE | NEWBERRY RD

FLOOR PLAN

7731 West Newberry Road | Gainesville, FL 32607



FOR MORE INFORMATION:



Eric Ligman
Director
352.256.2112
ericligman@bosshardtrealty.com



Makayla Richardson
Commercial Associate
352.256.7532
makayla@bosshardtrealty.com

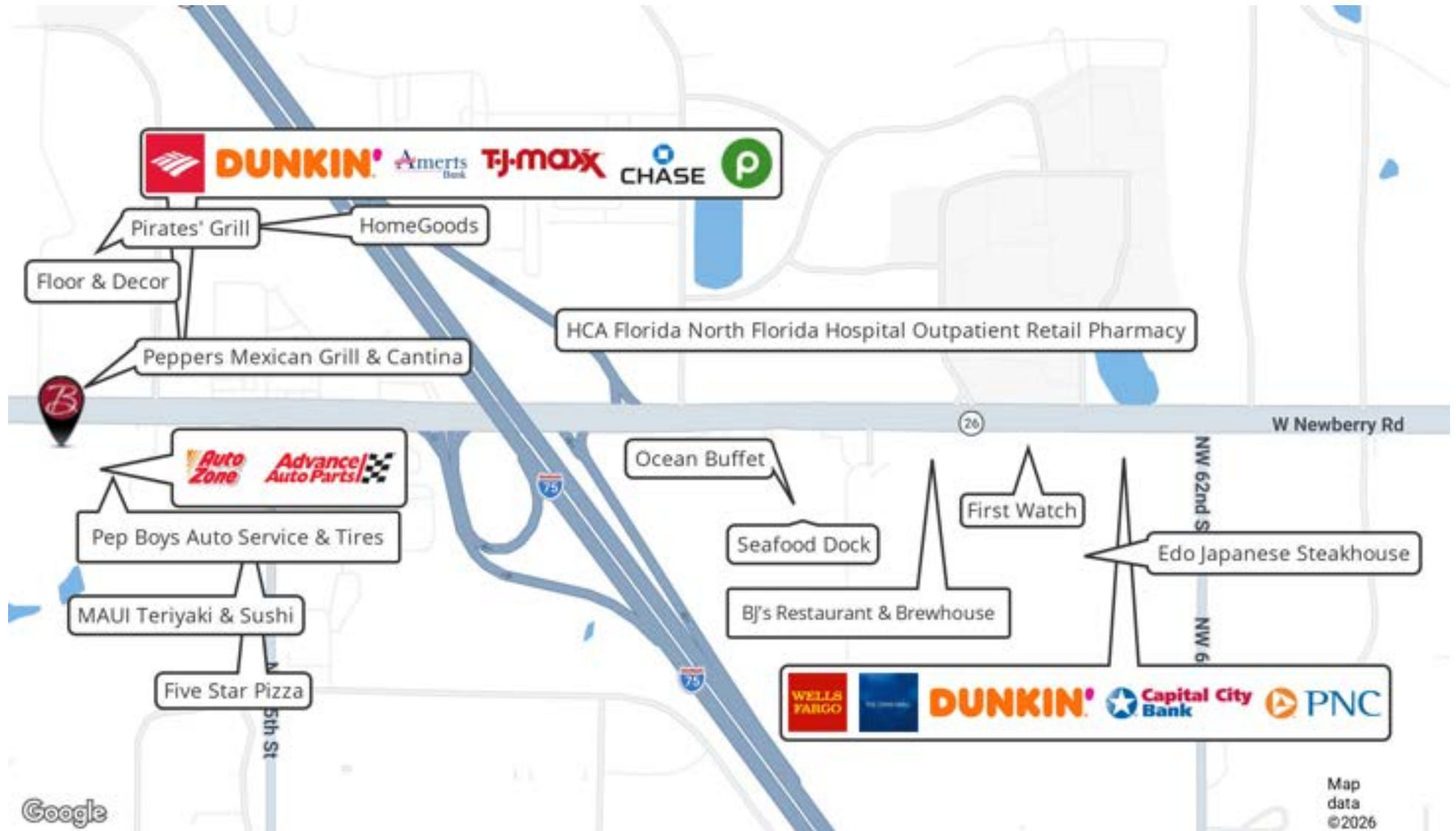


BOSSHARDT
— REALTY SERVICES —
COMMERCIAL & LAND DIVISION

PROFESSIONAL / MEDICAL OFFICE | NEWBERRY RD

RETAILER MAP

7731 West Newberry Road | Gainesville, FL 32607



FOR MORE INFORMATION:



Eric Ligman
Director
352.256.2112
Ericligman@bosshardtrealty.com



Makayla Richardson
Commercial Associate
352.256.7532
makayla@bosshardtrealty.com



BOSSHARDT
— REALTY SERVICES —
COMMERCIAL & LAND DIVISION

PROFESSIONAL / MEDICAL OFFICE | NEWBERRY RD

DEMOGRAPHICS MAP & REPORT 7731 West Newberry Road | Gainesville, FL 32607

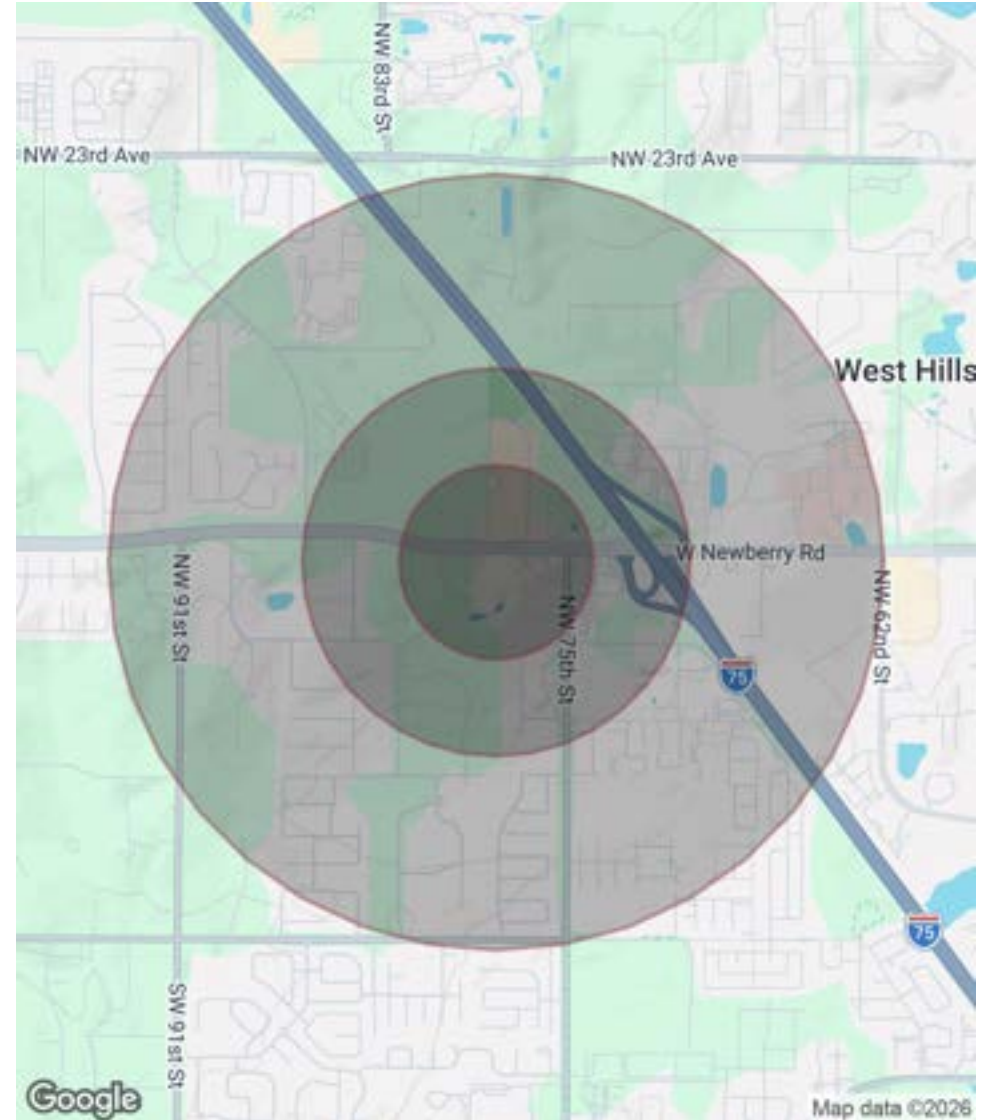
POPULATION

	0.25 MILES	0.5 MILES	1 MILE
Total Population	274	1,245	8,142
Average Age	46.8	43.4	34.6
Average Age (Male)	46.1	41.9	34.2
Average Age (Female)	47.0	44.1	35.0

HOUSEHOLDS & INCOME

	0.25 MILES	0.5 MILES	1 MILE
Total Households	112	478	3,713
# of Persons per HH	2.4	2.6	2.2
Average HH Income	\$115,669	\$103,714	\$69,405
Average House Value	\$258,869	\$238,882	\$211,454

2023 American Community Survey (ACS)



FOR MORE INFORMATION:



Eric Ligman

Director

352.256.2112

Ericligman@bosshardtrealty.com



Makayla Richardson

Commercial Associate

352.256.7532

makayla@bosshardtrealty.com



BOSSHARDT

— REALTY SERVICES —

COMMERCIAL & LAND DIVISION

PROFESSIONAL / MEDICAL OFFICE | NEWBERRY RD

7731 West Newberry Road | Gainesville, FL 32607



ERIC LIGMAN

Director

Ericligman@bosshardtrealty.com

Direct: **352.256.2112** | Cell: **352.256.2112**

PROFESSIONAL BACKGROUND

Eric Ligman is a prominent figure in the North Florida commercial real estate market, boasting over two decades of experience and an exceptional reputation for delivering results. As the Director of the Commercial and Land Division at Bosshardt Realty Services, Eric is known for his unwavering commitment to his clients and innovative strategies that achieve their goals.

Eric has played a pivotal role in transforming the North Florida landscape by brokering major deals with national and regional companies such as Pennsylvania Real Estate Trust, Campus USA Credit Union, TD Bank, Encell Technologies, RaceTrac, and Sunstate Credit Union. His expertise in navigating complex transactions and negotiating favorable client terms has earned him a trusted and indispensable reputation in the industry.

MEMBERSHIPS

ICSC
LoopNet
CoStar
Gainesville Chamber Commerce
GACAR- Gainesville Alachua County Association of Realtors
National Association of Realtors (NAR)

Bosshardt Realty Services

5542 NW 43rd Street
Gainesville, FL 32653
352.371.6100

FOR MORE INFORMATION:



Eric Ligman

Director

352.256.2112

Ericligman@bosshardtrealty.com



Makayla Richardson

Commercial Associate

352.256.7532

makayla@bosshardtrealty.com



BOSSHARDT

— REALTY SERVICES —

COMMERCIAL & LAND DIVISION

PROFESSIONAL / MEDICAL OFFICE | NEWBERRY RD

7731 West Newberry Road | Gainesville, FL 32607



MAKAYLA RICHARDSON

Commercial Associate

makayla@bosshardtrealty.com

Direct: **352.256.7532**

FL #SL3598503

PROFESSIONAL BACKGROUND

As a Commercial Associate with Bosshardt Realty, Makayla Richardson takes a multi-faceted and forward-thinking approach to commercial real estate. With two years of experience, she brings a fresh perspective to a seasoned industry, combining market insight with creativity and strategy.

Makayla specializes in acquisitions, focusing on industrial and retail properties across North Florida. Her goal is to help business owners, landlords, and developers maximize profitability through informed deal structures and a deep understanding of market trends.

An entrepreneur at heart, Makayla also runs GainesvilleCommercial.com, where she interviews local business owners and developers, gaining unique insights into the region's growth and innovation. Passionate about learning and leveraging new technology, she's dedicated to delivering value and helping clients achieve lasting success.

EDUCATION

Associate's Degree in Economics, Santa Fe College

MEMBERSHIPS

GACAR - Realtor Association

Bosshardt Realty Services

5542 NW 43rd Street
Gainesville, FL 32653
352.371.6100

FOR MORE INFORMATION:



Eric Ligman

Director

352.256.2112

Ericligman@bosshardtrealty.com



Makayla Richardson

Commercial Associate

352.256.7532

makayla@bosshardtrealty.com



BOSSHARDT

— REALTY SERVICES —

COMMERCIAL & LAND DIVISION