



FOR LEASE

REGION

460 NEWTON STREET

SOUTH HADLEY, MA

Region Commercial is pleased to offer, on an exclusive basis, 460 Newton Street in South Hadley, MA, available for sale or lease. The property, formerly a bank branch, is situated on approximately 0.81 acres and consists of roughly 5,608 square feet of space.

This well-located property offers easy access to Routes 33, 202, and I-91, and is in close proximity to national brands and neighborhood amenities. Positioned at a lighted intersection along Newton Street(Route 116), a primary commercial corridor in South Hadley, the site benefits from steady daily traffic volume and strong local visibility. The property includes three existing drive-up lanes, offering added functionality for financial, retail, or service-based users.

The property is located less than one mile from the South Hadley Village Commons and Mount Holyoke College, and within a short drive to Holyoke, Chicopee, and the greater Springfield area, providing convenient access to a broad regional customer base.

PRICE **\$26-\$28/SF NNN**

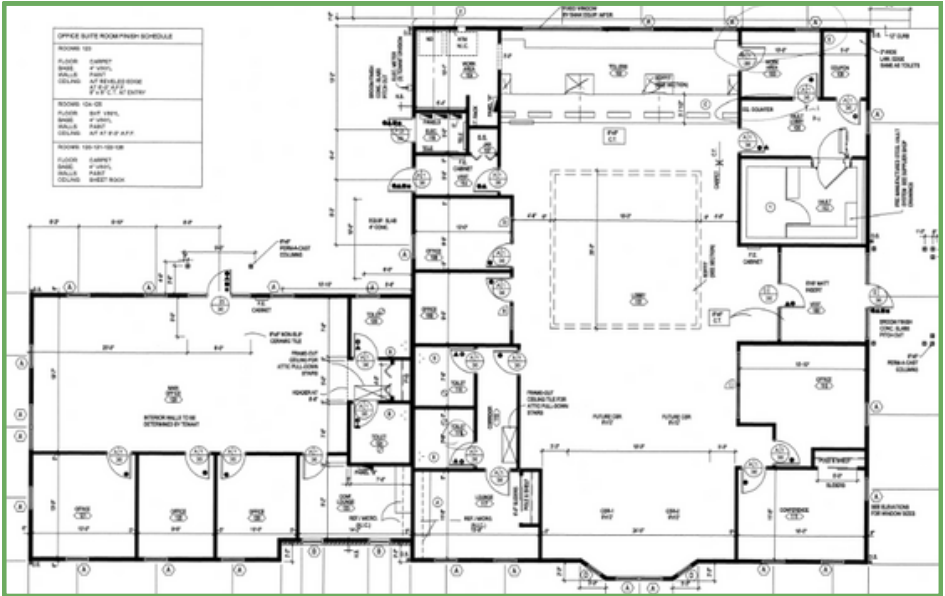
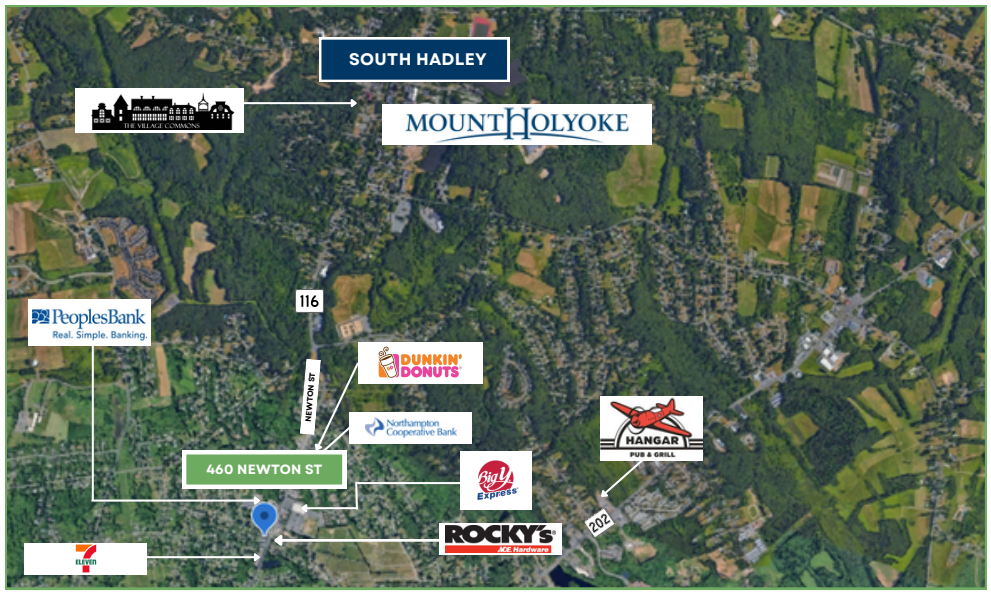
CAM	\$3.23/SF/YR
TAXES	\$3.23/SF/YR
ZONING	BA
SIZE	5,608 SF
YEAR BUILT	2006
HEAT AND A/C	FORCED HOT AIR & AC
WATER	MUNICIPAL
SEWER	MUNICIPAL

LEASE OPTIONS

SUITE 1A	2,019 SF
SUITE 1B	2,019 SF
SUITE 1A +1B	4,038 SF
TOTAL BUILDING	5,608 SF







REGION

THE INFORMATION CONTAINED HEREIN HAS NOT BEEN VERIFIED AND IS FROM THIRD PARTY SOURCES. ALL INDIVIDUALS CONSIDERING THE SUBJECT PARTY MUST CONDUCT THEIR OWN ANALYSIS AND DETERMINE THE ACCURACY OF THE INFORMATION PROVIDED.

CONTACT

MITCH BOLOTIN
P: 413-415-1200 C: 413-537-2020
E: MITCH@REGIONCO.COM
LIC (MA): 134459
REGION CO LLC

BEN BOLOTIN
P: 413-415-1200 C: 413-530-3215
E: BEN@REGIONCO.COM
LIC (MA): 9582125
REGION CO LLC